

Migrate MindManager user data to MindManager 15

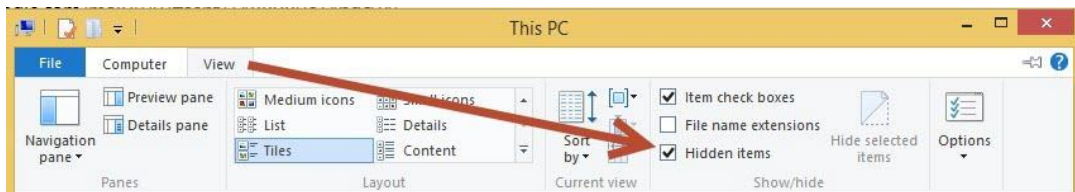
Windows 8 and 8.1 users:

To migrate custom map parts, icons, templates or styles created in MindManager 14 to MindManager 15, please proceed as follows:

Open Windows Explorer from the Windows task bar.



Select the "View" tab and check show "Hidden Items"



In Windows Explorer enter the following Path:

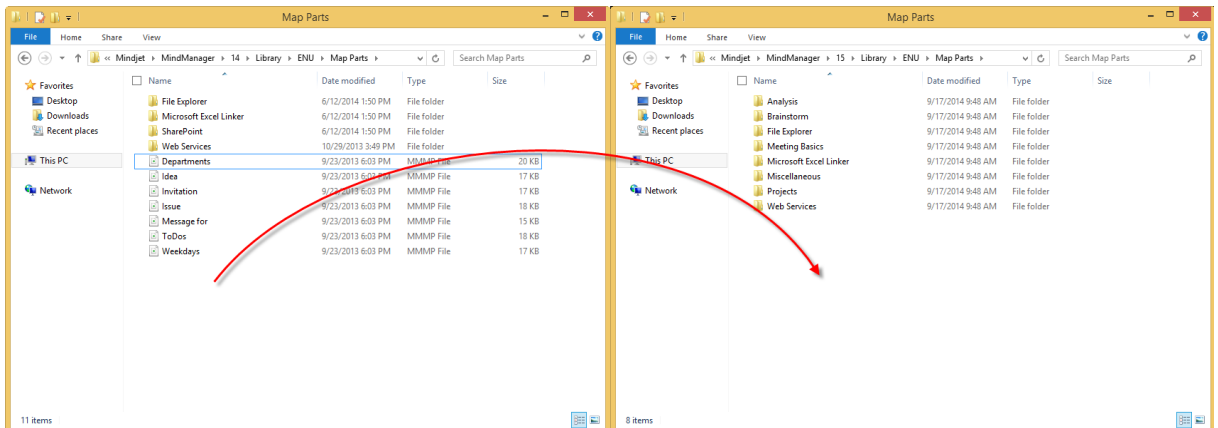
`%LOCALAPPDATA%/Mindjet/MindManager/14/Library/ENU`

Select the folder containing the desired user data (eg. map parts, templates...).

Copy the content to the library folder of MindManager 15, found at:

`%LOCALAPPDATA%/Mindjet/MindManager/15/Library/ENU`

Example for Map Part Migration:

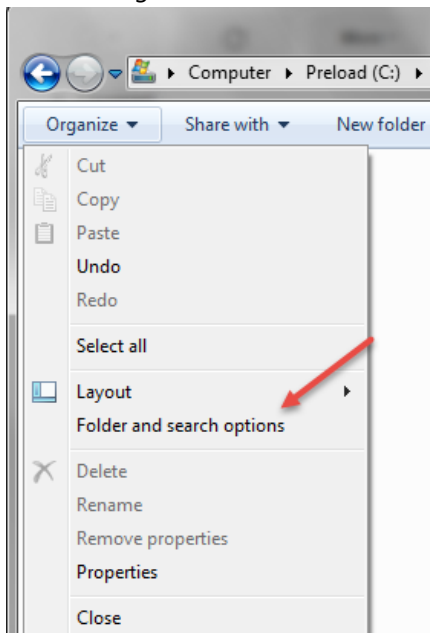


After restarting MindManager the content will appear in MindManager 15

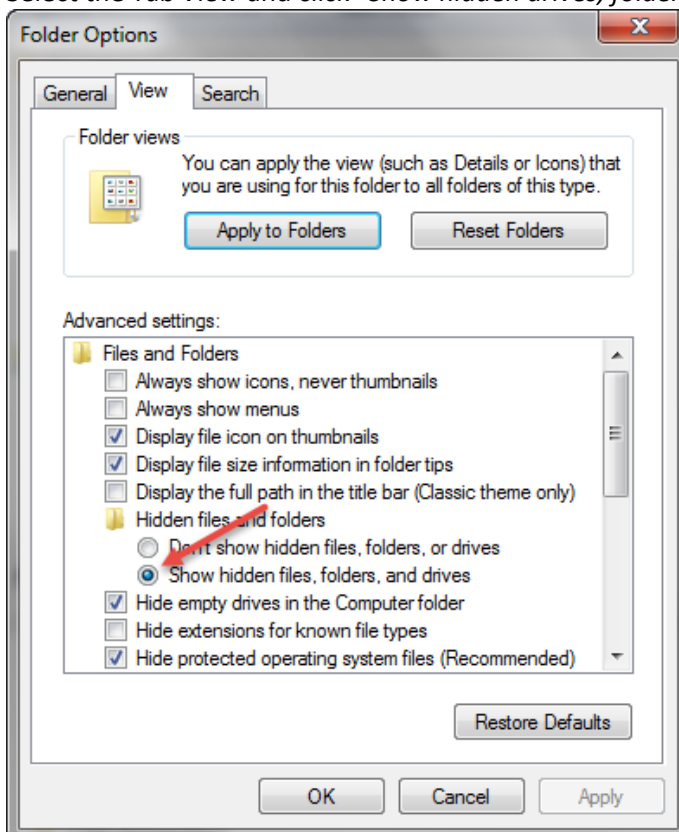
Windows 7 users:

To migrate custom map parts, icons, templates or styles created in MindManager 14 to MindManager 15, please proceed as follows:

1. Open the Windows Explorer from the Windows Start Menu.
2. Click on *Organise* and select *Folder and search options*.



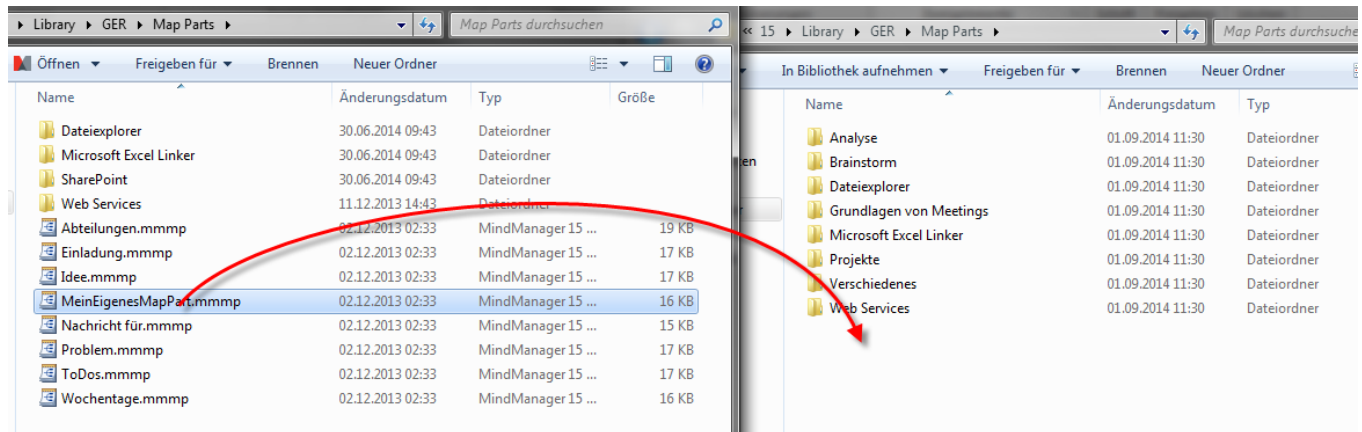
3. Select the Tab View and click "Show hidden drives, folders and drives". Confirm with "OK"



4. In Windows Explorer enter the following Path:
%LOCALAPPDATA%/Mindjet/MindManager/14/Library/ENU

Select the folder containing the desired user data (ea. map parts, templates...).
Copy the content to the library folder of MindManager 15, found at:
%LOCALAPPDATA%/Mindjet/MindManager/15/Library/ENU

Example for Map Part Migration:



After restarting MindManager the content will appear in MindManager 15

If you have any questions or need assistance installing your new product, please contact Mindjet Customer Support and Service at mindjet.com or via phone on +44 (0) 845 355 5501.

Mindjet, MindManager and the Mindjet logo are trademarks of Mindjet, registered in the United States and other countries. Android is a trademark of Google Inc. iPad and iPhone are trademarks of Apple Inc., registered in the U.S. and other countries. The "IN" logo, "f" logo, "g+", and "t" logo are trademarks of LinkedIn, Ltd.; Google Inc.; Facebook, Inc.; and Twitter, Inc., registered in the U.S. and other countries, respectively. Other names may be trademarks of their respective owners.

Mindjet GmbH, European Headquarters, Siemensstraße 30, 63755 Alzenau, Germany, www.mindjet.com