



Mindjet MindManager Pro 7 **Large-Scale Deployment Guide**



Abstract

This document provides complete information about how to customize and administer large-scale deployments of MindManager Pro 7. Topics include:

- Mindjet MindManager Pro 7 [components](#)
- Understanding [large-scale deployment strategies](#)
- Deploying MindManager using the [installation wizard](#) or from the [command](#) line
- Deploying MindManager with [Windows Active Directory](#)
- Deploying Mind Manager with [Windows Server 2003 running Terminal Services](#)
- Deploying MindManager with [Citrix Presentation Server](#)

Document Version 1.5
© 2008 Mindjet LLC. All Rights Reserved.

Contents

Abstract	ii
Contents	iii
List of Tables.....	vi
About This Guide	vii
Getting Help	vii
System Requirements	1
Understanding Deployment Strategies	3
Running the Standard Setup Manually or Automatically	3
Running the Admin Setup Manually or Automatically	3
Deploying MindManager with Active Directory	4
Deploying MindManager with Windows Server 2003.....	4
Deploying MindManager with Citrix Presentation Server.....	4
Using System Management Software and a Custom Setup	4
Deploying MindManager on a Shared Network Drive.....	5
Using the Admin Setup	6
Required Software	7
Required Permissions and Privileges.....	7
Differences between the Standard and Admin Setups.....	7
Installing MindManager Pro 7: An Overview	8
Per-machine setup	8
Per-user setup	8
What Gets Installed	10
MindManager Components	10
Library.....	11
Dictionaries.....	11

Tutorials.....	11
PDF-XChange.....	12
User Configuration Files.....	12
Shortcuts and Start Menu items.....	13
Shared System Software.....	13
Third-Party Software.....	14
Registry Keys.....	16
What Remains After Uninstallation	19
Remaining Files, Folders, and Software Components.....	19
Remaining Registry Keys.....	20
Deploying with the Installation Wizard	21
Starting the Installation.....	21
Customizing the Installation	22
Disabling Default Features.....	22
Changing the Default Installation Folder.....	23
Deploying User Data and the Library to a Server.....	23
Completing the Installation.....	25
Deploying from the Command Line	26
Configuring Installation Parameters from the Command Line	26
Configuring Features from the Command Line.....	28
Customizing the Installation with Setup.exe.....	28
Customizing the Installation with MSI.....	29
Configuring Functions from the Command Line.....	32
Configuring Functions from the Registry	33
Deploying User Data, the Library, and Tutorials.....	33
Deploying User Data, the Library, and Tutorials from the Command Line.....	33
Deploying User Data from the Registry	35
Sample Setup Commands.....	36
Simple Installation.....	37
Silent Installation	37
Sample Customized Installation Using ADDLOCAL and REMOVE	37
Uninstallation.....	37
Deploying with Active Directory	38
Deploying with Windows Server 2003	40

Deploying with Citrix Presentation Server	42
Basic Installation for the Citrix Desktop	42
Advanced Installation of a "Seamless" Window	42
Administering MindManager	48
Managing Add-Ins.....	48
Registering or Unregistering Add-Ins from the Command Line.....	48
Managing Add-Ins from the Registry	48
The Registry Add-In List	49
Removing or Restoring Add-Ins from the Registry	49
Enabling or Disabling Add-Ins from the Registry	50
Managing Microsoft Office Add-Ins.....	51
Managing MindManager Pro 7 from the Registry	52
HKEY_LOCAL_MACHINE Settings.....	52
HKEY_CURRENT_USER Settings	53
Managing MindManager Pro 7 with Event Macros	53
Managing User Licenses	56
Policies Support.....	56

List of Tables

Table 1: System Requirements for MindManager Pro 7	1
Table 2: Configuration Files	12
Table 3: Location of Shared System Components	13
Table 4: Third-Party Software Overview	14
Table 5: MindManager Registry Key Overview.....	16
Table 6: Remaining Files, Folders, and Software components.....	19
Table 7: Remaining Registry Keys	20
Table 8: Configuring Installation Parameters from the Command Line.....	26
Table 9: Configuring Features with MSI from the Command Line	30
Table 11: Configuring Functions from the Command Line	32
Table 12: Configuring Functions from the Registry	33
Table 13: User Data Deployment Options.....	34
Table 14: Library Deployment Options.....	34
Table 15: Tutorial Deployment Options.....	35
Table 16: User Data Registry Key Values.....	36
Table 17: Properties Editable in Properties Table	38
Table 18: HKEY_LOCAL_MACHINE Registration Values	52
Table 19: HKEY_LOCAL_MACHINE Settings.....	52
Table 20: HKEY_CURRENT_USER Settings.....	53
Table 21: Event Macros	54

About This Guide

Many Mindjet customers have requested support for customized deployment of MindManager Pro to large numbers of client machines. We have worked with them to support the following options:

- Running the [standard setup](#) manually or automatically
- Running the [admin setup](#) manually or automatically
- Deploying MindManager Pro 7 using the [installation wizard](#)
- Deploying MindManager Pro 7 from the [command line](#)
- Deploying MindManager Pro 7 with [Windows Server 2003 running Terminal Services](#)
- Deploying MindManager Pro 7 with [Citrix Presentation Server](#)
- Deploying MindManager with Windows Active Directory (limited support*)

This deployment option is not supported:

- Install the program on a Shared Network Drive

Mindjet does not support large-scale deployment for MindManager Lite.

* Check with your support representative for more information.

Getting Help

For technical support with this product, go to <http://www.mindjet.com/support>. Here you find links to the Knowledge Base, User Forums, and other online resources. You can also submit a support request.

System Requirements

The following are the hardware and software requirements for MindManager Pro 7:

Table 1: System Requirements for MindManager Pro 7

Hardware Requirements	Software Requirements	Browser Requirements
<ul style="list-style-type: none"> • Pentium 700 MHz or higher • 256 MB RAM or higher • 150 MB disk space (50 MB on installation drive during install) • 1024x768 resolution or higher • 16-bit/65K color or higher 	<p>Operating System (32-bit)</p> <ul style="list-style-type: none"> • Microsoft Windows XP Home SP2 • Microsoft Windows XP Professional SP2 • Microsoft Windows XP Tablet PC SP2 • Microsoft Windows Vista Ultimate/Business • Microsoft Windows Server 2003 • Microsoft Systems Management Server Using Windows Server 2003 • Citrix MetaFrame Presentation Server 4.0 <p>Software Requirements</p> <ul style="list-style-type: none"> • .NET 2.0 or higher* • MSXML 6 SP1 or higher* • MS VC++ 2005 SP1 Redistributable or higher* • Microsoft Office XP/2003/2007 • Microsoft Project 2002/2003/2007, including Multilingual User Interface Packs (for optimal use) • Microsoft Visio 2002/2003/2007 (for optimal use) • Adobe Acrobat 6.0 or higher (for PDF Export) • Adobe Flash Player (for Tutorials playback) <p>* Included in the Admin setup package</p>	<ul style="list-style-type: none"> • Microsoft Internet Explorer 6.0 or higher • Mozilla Firefox 2.0 or higher

For deploying Mindjet MindManager Pro 7 in a terminal server environment, the following are prerequisites:

- Windows Server 2003 running Terminal Services

or

- Citrix MetaFrame Presentation Server 4.0

When using this method, each client machine must also meet the software and hardware requirements. When running MindManager 7 on a terminal server, the client must be able to connect and handle RDP. The server requirements depend on the number of clients.

Understanding Deployment Strategies

This section describes different deployment strategies, including their basic technologies, advantages and disadvantages, and their level of support.

Running the Standard Setup Manually or Automatically

You can deploy MindManager Pro 7 on a machine-by-machine basis using the standard setup (MindManager 7xPro.exe) by installing MindManager from the CD or from a centrally accessible server. The standard setup is robust, interactive, and user-friendly, but does not support customized deployment.

Using the standard setup has these advantages:

- The program installs and operates properly on supported systems
- It requires no additional software or server resources
- Users with local administration privileges can manage updates themselves

And these disadvantages:

- Manual installation is time-consuming
- The installed software uses up disk space on each user's system
- Centralized administration becomes more difficult

Running the Admin Setup Manually or Automatically

The MindManager Pro 7 admin setup provides more control over installation and administration. You can run the admin setup from a server manually or via a log-on script. If you use Windows Active Directory, Group Policy, and IntelliMirror, you can install MindManager Pro 7 on groups of user systems.

Using the admin setup has these advantages:

- MindManager Pro 7 installs and operates properly on supported systems
- It requires no additional software or server resources
- You can customize installations on a per-group or per-user basis
- You can run the installation silently
- The installer is not cached on the client machine, reducing the required disk space

And these disadvantages:

- Access to the original installer is required for repair and other setup operations

Deploying MindManager with Active Directory

This method is not yet fully supported. Due to the application architecture, MindManager only supports Computer-based Software installations via Active Directory. User-based deployment is not supported. Using a third party tool such as Orca allows you to edit properties for deployment. See [Deploying MindManager Pro 7 with Active Directory](#).

Deploying MindManager with Windows Server 2003

Deploying MindManager Pro 7 from a terminal server to a thin client is another supported option. With this architecture it is possible, for example, to "run" a Windows XP application on a Windows 2000 client machine, where one server services many clients. You need to deploy MindManager Pro 7 using Windows Server 2003 Terminal Services in order to use full color mode in MindManager.

Deploying MindManager with Citrix Presentation Server

The Citrix MetaFrame Presentation Server is a sophisticated terminal server environment built on top of the Windows Terminal Services provided by Windows Server. This is currently the only tested and supported Citrix platform for MindManager (although other combinations may work).

Using System Management Software and a Custom Setup

System management software, such as Microsoft System Management Server, enables you to centrally install and administer client machines. While you can deploy MindManager Pro 7 using such software, there is no specialized support for this in MindManager Pro 7. Information contained in this document supplies much of the information you need if you choose to deploy MindManager in this way.

Using system management software has these advantages:

- You can deploy the software to many machines with one command
- You can create different setups for different groups of users
- Updating the software is simple

And these disadvantages:

- You have to have system management software in place
- It takes time to create the custom setup
- The installed software uses up disk space on each user's system

Deploying MindManager on a Shared Network Drive

Mindjet does not support installing MindManager Pro 7 on a shared network drive and having users run it directly from there.

Using the Admin Setup

MindManager Pro 7 admin setup (available on CD or at <http://www.mindjet.com>) gives systems administrators more control over an installation. It is distributed in a .zip archive file MindManager 7.x.xyz Pro Admin <language>.zip that contains the files:

- Mindjet MindManager Pro 7 Admin.msi
- instmsi30.exe
- dotnetfx20.exe
- msxml6_x86.msi
- vcredist_sp1_x86.exe
- Mindjet_MindManager_7_Pro_Large_Scale_Deployment_Guide.pdf

Mindjet MindManager Pro 7 Admin.msi is the Microsoft installer file for MindManager Pro 7.

instmsi30.exe file is the engine installer for the Microsoft Windows Installer.

dotnetfx20.exe is Microsoft's .NET Framework 2.0 redistributable setup.

msxml6_x86.msi is the MSXML 6.0 installer

vcredist_sp1_x86.exe is a self-extracting executable file that installs the latest version of the Microsoft Visual C++ run-time files and operating system components.

Mindjet_MindManager_7_Pro_Large_Scale_Deployment_Guide.pdf is this Deployment Guide.

Using the admin setup gives you nearly complete control over your MindManager Pro 7 deployment including:

- Deploying (or not deploying) specific components, such as the PDF writer
- Disabling functions, such as internet access
- Storing components on network drives, such as user data or the library

You also have the option of configuring many items from the registry.

Warning:

Only experienced system administrators should attempt deploying MindManager Pro 7 using the Admin Setup.

Configuring MindManager Pro 7 from the command line or by editing registry keys should be undertaken with caution as well.

Required Software

All required software is included in the [admin setup package](#). It contains some software which must be installed on your system before using the setup. You should verify that this software is already installed on your system, and if not, install it from the admin package.

`dotnetfx20.exe` installs the Microsoft Net Framework 2.0

Check the installed programs in the Control Panel to check existing installation.

`msxml6_x86.msi` installs the MSXML 6.0 Parser

Check the installed programs in the Control Panel to check existing installation.

`vcredist_sp1_x86.exe` installs the VC++ Redistributable components

Check for existence of registry key:

HKEY_LOCAL_MACHINE\SOFTWARE\Microsoft\Windows\CurrentVersion\Uninstall\{7299052b-02a4-4627-81f2-1818da5d550d}

Or simply re-install.

Important:

You should check for and install any missing components in the order listed above.

Required Permissions and Privileges

Administrator privileges are required to install any Windows software including MindManager Pro 7.

No special privileges or disk permissions are required to run MindManager Pro 7. A user can run the program as a restricted user, "normal" user, power user, or administrator. The program does assume that it has read/write/create privileges in the HKEY_CURRENT_USER registry key as well as the user profile section of the hard disk and below.

If a user does not have write privileges in the HKEY_LOCAL_MACHINE registry key, then:

- The **Help > Check for Updates** command is removed for that user, ensuring that they won't try to perform an upgrade that they are not authorized to do.
- MindManager does not repair any broken registry file associations and other local machine registration settings on startup.

Differences between the Standard and Admin Setups

The MindManager Pro 7 admin setup is based on the standard setup with a number of important differences:

- **Caching:** The admin setup does not cache the setup on the computer where it is being installed. Instead the setup should be run from a network location that remains accessible from the workstation at all times. This ensures proper operation of the Modify, Repair and Remove entries in the "Add/Remove programs" Control Panel applet and avoid duplication of the installation source on every system where MindManager Pro 7 is installed.

- **Patching:** Admin setups are only delivered as full setups, not patch setups. The reason for this is that system administrators might modify the admin setup to suit the needs of their individual company. If the installation database is transformed in this way, a future MindManager Pro 7 patch would not be able to properly update the installation. We avoid this problem by not delivering patch updates at all for our admin setups. To upgrade, you need to uninstall the previous version of MindManager and install the upgrade.
- **Packaging:** We exclude the Microsoft Windows Installer engine and .NET Framework installer. Both components need to be installed prior to running MindManager.msi if they are missing from a user's machine.
- **User Data:** The admin setup includes option to specify the location of user data.
- **Library Files:** There is also an option to have MindManager Pro 7 extract the library files as usual or to have the administrator set this up "manually" ahead of time. This is described in [Installing User Data and Library Files to a Server](#).

For more a more in-depth look at the admin setup and MindManager Pro 7 components, see [Installing MindManager Pro 7: An Overview](#).

Installing MindManager Pro 7: An Overview

This section gives a general overview of the admin setup and MindManager Pro 7 components. With this information, you understand the installation process and are able to decide what you may wish to customize for your MindManager deployment.

Per-machine setup

The MindManager 7 setup installs the program on a client machine and only sets per-machine registry settings in the `HKEY_LOCAL_MACHINE` and `HKEY_CLASSES_ROOT` registry keys. It does not directly create or set any registry keys or values in the `HKEY_CURRENT_USER` registry key.

The MindManager 7 installer installs all program files to this default folder:

```
C:\Program Files\Mindjet\MindManager 7
```

Administrator privileges are required to install any Windows software, including MindManager 7.

Per-user setup

Each time MindManager launches; it checks the `UserData.ini` file, located in:

```
C:\Documents and Settings\Username\Local Settings\Application Data\Mindjet\MindManager\7
```

to see if a per-user setup needs to be done. If this file is missing or if the version of MindManager installed is newer than the version the user last ran, then MindManager prepares for a "new" per-user installation by deleting the following registry key:

```
HKEY_CURRENT_USER\Software\Mindjet\MindManager\7\User Interface
```

MindManager also determines if the per-user application data files (outline print templates and spell check auto-correct dictionaries) are present. If not, it copies them from the "All Users" folder:

```
C:\Documents and Settings\All Users\Application  
Data\Mindjet\MindManager\7
```

Finally, MindManager determines if the per-user Library files need to be installed using the same UserData.ini algorithm described above *and* checking that the LSDUserDataExtract registry setting is not set to 0. If so, then a separate background task/program is run to unzip the library files from a MindManager sub-folder:

```
C:\Program Files\Mindjet\MindManager 7\sys\<language version>
```

The **Vista** system folder structure uses environmental variables instead of real paths. Note the different path structure below:

```
%USERPROFILE%\Local Setting\Application Data\Mindjet\MindManager\7
```

```
%ALLUSERPROFILE%\Application Data\Mindjet\MindManager\7
```

```
%ProgramFiles%\Mindjet\MindManager 7\sys\<language version>
```


What Gets Installed

The MindManager 7 Admin setup installs:

- Required program files
- Configurable MindManager Components
- Shortcuts and Start Menu items
- Third-party add-ins
- Shared system software
- Registry keys

The default location for required program files is:

```
C:\Program Files\Mindjet\MindManager 7
```

This folder contains `MindManager.exe`, MindManager DLLs, and third-party components. No user files are stored in this folder.

MindManager uses merge modules to install required system software, such as `ATL80.dll`. If MindManager uses a later version of a component than one already installed on the machine, the required version gets installed. For more information, see [Shared System Software](#).

The first time a user runs MindManager Pro 7, user data is placed in this default location:

```
C:\Documents and Settings\UserName\Local Settings\Application Data\Mindjet\MindManager\7
```

where *UserName* is the current user name. You must enable viewing hidden files to see this directory.

The first time a user starts MindManager 7, the application also searches to see if a Microsoft Office custom dictionary exists for that user (e.g. "`C:\Documents and Settings\UserName\Application Data\Microsoft\Proof\CUSTOM.DIC`"). If the user-specific Microsoft Office custom dictionary is found, a reference to that dictionary is added to the list of spelling dictionaries.

MindManager Pro stores maps at this default location:

```
C:\Documents and Settings\UserName\My Documents\My Maps
```

MindManager Components

MindManager installs a variety of configurable components, including:

- Library
- Dictionary
- Tutorials
- PDF-XChange

User configuration files are also installed to help govern their behavior.

Library

The Library component consists of two sub-components: Images and the Template Organizer. These are optional but highly recommended components. Images are a library of pictures used to help make maps more memorable. The Template Organizer contains a variety of map and web templates.

The library does not get uninstalled if you uninstall MindManager; this content is preserved for users upgrading to newer versions of MindManager.

The default location for the Library is:

```
C:\Documents and Settings\<user name>\Local
Settings\Application
Data\Mindjet\MindManager\7\Library\<language version>
```

You may wish to install the library to a different location. See the documentation for deploying with the [Installation Wizard](#) or from the [command line](#) for instructions.

Dictionaries

The Dictionaries component contains spell check dictionaries available for MindManager, including dictionaries for over 10 languages. When using the installer, you can choose which dictionaries to install. You can also control dictionary installation from the command line.

Dictionaries do not get uninstalled if you uninstall MindManager; this content is preserved for users upgrading to newer versions of MindManager.

The default location for Dictionaries is:

```
C:\Documents and Settings\<user name>\Local
Settings\Application Data\Mindjet\MindManager\7\Spell
```

Tutorials

By default, three tutorials get installed with MindManager Pro 7. Other tutorials open from the Internet. The default location for local tutorials is:

```
C:\Program Files\Mindjet\MindManager 7\<language version>
```

You can customize your tutorial installation by choosing:

- To deploy them to a server, rather than installing them on local machines
- To not deploy tutorials at all
- To install additional tutorials using `MM7Tutorials.msi`.

To customize tutorial installation, see [Deploying User Data, the Library, and Tutorials from the Command Line](#).

PDF-XChange

PDF-XChange is an optional component that allows you to export maps to PDF. Users without a full-license for PDF-XChange see a prominent watermark when printing to PDF from other document formats. The watermark prompts the user to purchase a full version of PDF-XChange. Printing from the Outline view within MindManager also produces this watermark.

PDF-XChange components get installed in two places:

- Its installer, PDFX3SA_sm.exe, gets installed at %ProgramFiles%\Mindjet\MindManager 7
- Other components get installed at %ProgramFiles%\Mindjet\MindManager 7\ PDF-XChange 3

The installer PDFX3SA_sm.exe gets uninstalled with MindManager. Its other components do not.

User Configuration Files

MindManager creates and stores user configuration files for different purposes.

Table 2: Configuration Files

File Name	Location and Function
ImagePropertyDatabase.dat	C:\Documents and Settings\ <username>\Local Settings\Application Data\Mindjet\MindManager\7 This file is created dynamically by MindManager (not the installer). It collects information about keywords assigned by the user to images.</username>
UserData.ini	C:\Documents and Settings\ <username>\Local Settings\Application Data\Mindjet\MindManager\7 This file detects the first time MindManager is launched by a user and initiates procedures such as registry cleanup.</username>
Library.ini	C:\Documents and Settings\ <username>\Local Settings\Application Data\Mindjet\MindManager\7\Library\<language version> This file detects the library installation time. Because MindManager installs the library the first time it gets launched, this file prevents multiple library installations.</username>

Shortcuts and Start Menu items

The MindManager 7 installer puts a shortcut to the program on the Windows Desktop, Windows Send To menu and in the main Start menu. It creates a Mindjet MindManager Pro 7 folder in the Start > Programs folder with a shortcut to MindManager in it.

The MindManager 7 shortcut is an "advertised shortcut" to the MindManager program that automatically checks to see if the program needs to be repaired before it is run. If a repair is needed, it is done then. If you do not want to use this self-repairing feature, you can create a shortcut directly to the MindManager.exe file instead. Deleting this copy of the installer disables the self-repair service as well.

Shared System Software

Some shared software must be [installed on your system](#) before using the admin setup. During installation MindManager uses merge modules to install other missing software, such as PIPanel.msm. Missing components are installed from the modules. Depending on the host machine's configuration, the merge module installs the components required for that machine.

These shared components do not get uninstalled automatically with MindManager. Their default locations are indicated below.

Table 3: Location of Shared System Components

Component	Folders and Files
Ink related files	<p>%CommonProgramFiles%\Microsoft Shared\Ink</p> <ul style="list-style-type: none">• InkObj.dll• tpcps.dll• PIPanel.exe*• PIPanel.dll*• GdiPlus.dll <p>%WINDIR%\system32</p> <ul style="list-style-type: none">• InkEd.dll• PipRes.dll*• wisptis.exe <p>* These components are installed only on Tablet PCs.</p>
C++ runtime libraries	<p>%WINDIR%\system32</p> <ul style="list-style-type: none">• msvcp60.dll• msvcp80.dll <p>For a complete list of these merge modules' components, see Microsoft's documentation</p>

Environment variable names (e.g. "%CommonProgramFiles%") is expanded to their actual values (e.g. "C:\Programs Files\Common Files") by the installer.

Third-Party Software

MindManager uses some third-party software. Unless otherwise stated, the installer

- Looks to see if the component is already installed. If it isn't, or if MindManager uses a newer version, the software gets installed or updated.
- Places third-party software at C:\Program Files\Mindjet\MindManager 7\
 - Uninstalls third-party software when MindManager get uninstalled

Except for [PDF-XChange](#), all third-party software is required.

Table 4: Third-Party Software Overview

Third-Party Software	Description and Vendor
adfactory.dll	<ul style="list-style-type: none">• Active Delivery Factory is a self-extracting zip executable• Inner Media, Inc.
atl70.dll	<ul style="list-style-type: none">• Active Template Library, template-based C++ classes, creates COM objects• Microsoft
BCGCBPRO730u.dll	<ul style="list-style-type: none">• BCG Control Bar Professional DLL for MindManager• BCGSoft Ltd. Portions
ChartFX.ClientServer.core.dll	<ul style="list-style-type: none">• Chart FX Client Server ActiveX Control is used with spread-sheets to create bar charts• Software FX, Inc.
dunzip32.dll	<ul style="list-style-type: none">• DynaZIP-32 Multi-Threading UnZIP DLL• Inner Media, Inc.
dzip32.dll	<ul style="list-style-type: none">• DynaZIP-32 Multi-Threading ZIP DLL• Inner Media, Inc.
extensibility.dll	<ul style="list-style-type: none">• Allows addition of add-ins• Microsoft
gdiplus.dll	<ul style="list-style-type: none">• GDI+ is a C/C++ API that supports integrating graphics and images on both the video display and printer• Microsoft
HTS32MM.dll	<ul style="list-style-type: none">• An HTML control that supports inserting pictures, hyperlinks, tables, and other objects into RTF text• Sub Systems, Inc.

Third-Party Software	Description and Vendor
Independentsoft.Webdav.dll	<ul style="list-style-type: none"> • WebDAV protocol client API for .NET Framework • Independentsoft
libtidyU.dll	<ul style="list-style-type: none"> • HTML Tidy fixes a variety of HTML issues • WWW Consortium
Microsoft.Licensing.dll files and .pdb file	<ul style="list-style-type: none"> • Microsoft licensing administration • Microsoft
Microsoft.Web.Services3.dll	<ul style="list-style-type: none"> • Microsoft Web Services Enhancements 3.0 for Microsoft .NET Framework • Microsoft
Mfc80.dll	<ul style="list-style-type: none"> • Microsoft Foundation Classes, wrap Windows APIs in C++ libraries, forming application framework • Other components are associated with this .dll. See Microsoft's documentation for complete information.
msvci70.dll	<ul style="list-style-type: none"> • Microsoft C++ Runtime Library • Microsoft
msvcp70.dll	<ul style="list-style-type: none"> • Microsoft C++ Runtime Library • Microsoft
mscr70.dll	<ul style="list-style-type: none"> • Microsoft C++ Runtime Library • Microsoft
PDFX3SA_sm.exe	<ul style="list-style-type: none"> • This exe installs PDF-Exchange to c:\Program Files \PDF-XChange • PDF-XChange export maps to PDF. For other document formats, it places a prominent watermark on the document, asking the user to purchase the product. • This installer gets uninstalled with MindManager, but the application itself does not. • Tracker Software Ltd.
SB6ENT.OCX	<ul style="list-style-type: none"> • WinWrapBasic supports Visual Basic scripting within MindManager • Polar Engineering
SBE6_000.cnt, SBE6_000.hlp, SBE6_000.chm	<ul style="list-style-type: none"> • WinWrapBasic Help files • Polar Engineering
SBE6_32.dll	<ul style="list-style-type: none"> • WinWrapBasic supports Visual Basic scripting within MindManager • Polar Engineering

Third-Party Software	Description and Vendor
Sfxbe322.dll	<ul style="list-style-type: none"> A 32-bit active delivery self-extracting back end zip executable. Inner Media, Inc.
Sfxfe32.exe	<ul style="list-style-type: none"> A 32-bit active delivery self-extracting front end zip executable. Inner Media, Inc.
Spr32du70.dll	<ul style="list-style-type: none"> FarPoint Spreadsheet Control FarPoint Technologies, Inc.
Ssce5532.dll	<ul style="list-style-type: none"> Spell checker engine Wintertree Software, Inc.
TER32MM.DLL	<ul style="list-style-type: none"> RTF edit control Sub Systems, Inc.
Vic32.dll	<ul style="list-style-type: none"> Image processor Catenary Systems, Inc.
vsflex8n.ocx	<ul style="list-style-type: none"> VSFlexGrid8 (Unicode) helps display, edit, and format tabular data in spreadsheets. Helps integrate with Microsoft Excel. ComponentOne
Zlib.dll	<ul style="list-style-type: none"> Lossless data compression library Jean-Loup Gailly and Mark Adler

Registry Keys

The installer places any per-machine MindManager 7 registry settings in or below the key:

HKEY_LOCAL_MACHINE\SOFTWARE\Mindjet\MindManager\7

These are the settings used by MindManager and its add-ins on a per-machine basis. No per-user values are stored in this key.

Following Windows guidelines, MindManager registers its associated file types, COM objects etc. in sub-keys of HKEY_CLASSES_ROOT.

Table 5: MindManager Registry Key Overview

Key Type	Location/Key
HKEY_LOCAL_MACHINE	HKEY_LOCAL_MACHINE\SOFTWARE\Mindjet\MindManager\7
HKEY_CLASSES_ROOT	HKEY_CLASSES_ROOT\... (all keys below this level) <ul style="list-style-type: none"> .mmap*

Key Type	Location/Key
	<ul style="list-style-type: none"> • .mmas • .mmat • .mmbas • .mmmp • .mmms • .mmp* • Mindjet.MindManager.Custom.Document • Mindjet.MindManager.Document.7 • Mindjet.MindManager.Document.Template.7 • Mindjet.MindManager.Macro.7 • Mindjet.MindManager.MapMarker.7Mindjet.MindManager.MapMarkerSet.7 • MMindjet.MindManager.MapPart.7 • Mindjet.MindManager.Style.7 • Mindjet.Mm5GenericSmartMapPart.AddIn • Mindjet.Mm5GenericSmartMapPart.AddIn.3 • Mindjet.Mm5OutlookMapMinderLinker.AddIn • Mindjet.Mm5OutlookMapMinderLinker.AddIn.3 • Mindjet.Mm5Sort.AddIn • Mindjet.Mm5Sort.AddIn.3 • Mindjet.Mm5WebExportAddIn • Mindjet.Mm5WebExportAddIn.3 • Mindjet.Mm7ExcelLinker.AddIn.3 • Mindjet.Mm7ExcelLinker.AddIn. • Mindjet.Mm6MsProject.AddIn. • Mindjet.Mm6MsProject.AddIn.3 • Mindjet.Mm7Outlook.AddIn. • Mindjet.Mm7Outlook.AddIn.3 • Mindjet.Mm7OutlookLinker.AddIn. • Mindjet.Mm7Outlooklinker.AddIn.3 • Mindjet.Mm7PPEExport.AddIn. • Mindjet.Mm7PPEExport.AddIn.3 • Mindjet.Mm7Project.AddIn. • Mindjet.Mm7Project.AddIn.3 • Mindjet.Mm7VisioExport.AddIn. • Mindjet.Mm7VisioExport.AddIn.3 • Mindjet.Mm7Word.AddIn. • Mindjet.Mm7Word.AddIn.3 • MindManager.Application • MindManager.Application.7 • MindManager.Color • MindManager.Color.7

Key Type	Location/Key
	<ul style="list-style-type: none"> • MindManager.TextFont. • MindManager.TextFont.7 • Mm5WebExport.Page • Mm5WebExport.Page.3 • Mm5WebExport.Pages • Mm5WebExport.Pages.3 • Mm5WebExport.VariantSets • Mm5WebExport.VariantSets.1 • Mm5WebExport.WebExport • Mm5WebExport.WebExport.3 • Mm5WebExport.WebExports • Mm5WebExport.WebExports.3 • MM7InternetExplorer.BHO • MM7InternetExplorer.BHO.2 HKEY_CLASSES_ROOT\Mindjet.Denali.Client.... (all keys below this level) <ul style="list-style-type: none"> • * Keys that remain after uninstalling MindManager
Uninstall Key	HKEY_LOCAL_MACHINE\SOFTWARE\Microsoft\Windows\CurrentVersion\Uninstall
HKEY_CURRENT_USER	HKEY_CURRENT_USER\Software\Mindjet\MindManager\7

Uninstall information for the program is stored in a sub-key of:

HKEY_LOCAL_MACHINE\SOFTWARE\Microsoft\Windows\CurrentVersion\Uninstall

The name of the sub-key is the Globally Unique Identifier (GUID) for the program (which changes with each release). You can find it by using RegEdit to search for "MindManager" in the Uninstall key. The uninstallation key does not remain after uninstalling MindManager.

When a user runs MindManager 7, any per-user registry settings are stored in or below the key:

HKEY_CURRENT_USER\Software\Mindjet\MindManager\7

Some Current User keys remain after uninstalling MindManager. These keys help preserve user data for upgrading to the next version of MindManager.

What Remains After Uninstallation

When you uninstall MindManager Pro 7, almost all traces of the application are removed, including all components located at `C:\Program Files\Mindjet\MindManager 7` (except for PDF-XChange program files). Most registry keys get removed as well. Map files (`.mmp` and `.mmap` files) do not get deleted.

On Microsoft Vista or any other system where the system administrator has disallowed the use of RegEdit to export the registry key (i.e. `DisableRegistryTools` is set), the registry key is backed up to a MM7 registry subkey under:

`HKCU\Software\Mindjet\MindManager\MMX7RegistryBackup_<date>_<time>`.

Most remnants are left behind to preserve user data when upgrading to a new version of MindManager. See [Remaining Files, Folders, and Software Components](#) and [Remaining Registry keys](#) for more information.

Remaining Files, Folders, and Software Components

When you uninstall MindManager, the installer leaves behind some components it installed with the program. In general, what gets left behind fits one of these scenarios:

- User data (the library, images, templates) gets left behind to support upgrading to the next version of MindManager
- Shared components, such as C++ libraries, and their registry keys get left behind because they may be required for other purposes
- A backup of your registry

Table 6: Remaining Files, Folders, and Software components

Component	Location and Explanation
C++ runtime libraries	See Shared System Components for locations. These files may be in use by other applications.
Ink related files	See Shared System Components for locations. These files may be in use by other applications.

Component	Location and Explanation
MMX7RegistryBackup_<date>_<time>	C:\MyDocuments\ Opening this file gives you the option to add its contents to your current registry.
msvc60.dll	%WINDIR%\system32 This software may be in use by other applications.
msvcrt.dll	%WINDIR%\system32 This software may be in use by other applications.
XML-related files	See Shared System Components for locations. These files may be in use by other applications.
PDF-XChange	c:\ProgramFiles\Mindjet\MindManager\PDF-XChange This software may be in use by other applications.
User Data	C:\Documents and Settings\<local user>\Local Settings\Application Data\Mindjet\MindManager\7 Contains dictionaries, images, templates dictionaries etc. which the user may have customized. Does not uninstall so the user does not lose this data when upgrading.

Remaining Registry Keys

Some registry keys remain after uninstallation. A backup copy of your registry gets placed at:

C:\My Documents\MMX7RegistryBackup_<date>_<time>

Table 7: Remaining Registry Keys

Registry Key	Location and Explanation
HKEY_CLASSES_ROOT	HKEY_CLASSES_ROOT\ <ul style="list-style-type: none"> • .mmap • .mmp These keys register .mmap file extensions.
HKEY_CURRENT_USER	HKEY_CURRENT_USER\Software\Mindjet\MindManager\7\ Keys at or below this preserve user data for upgrading.
HKEY_LOCAL_MACHINE	HKEY_LOCAL_MACHINE\SOFTWARE\Mindjet\MindManager\7\Installer\ This key and those below it are left behind for the installer.

Deploying with the Installation Wizard

Using the admin setup to install MindManager Pro 7 is straight forward and simple. Unlike the basic setup, you have customization options, though not as many as from the command line.

Starting the Installation

To install MindManager Pro 7:

1. Launch the installer.
2. At the welcome screen, click **Next**.
3. Select the **Country** and click **Next**.
4. Select I agree to the terms of the license agreement and click Next.
5. Enter the Customer Information.
 - User Name
 - Organization
6. Click **Next**.

The **Setup Type** dialog appears.



At this point you can customize your deployment or [complete the installation](#).

Customizing the Installation

A custom installation allows you to:

- Disable default features
- Change the default installation directory
- Deploy user data and the library on a separate server


If you need to customize the installation beyond these parameters, [install MindManager Pro 7 from the command line](#).

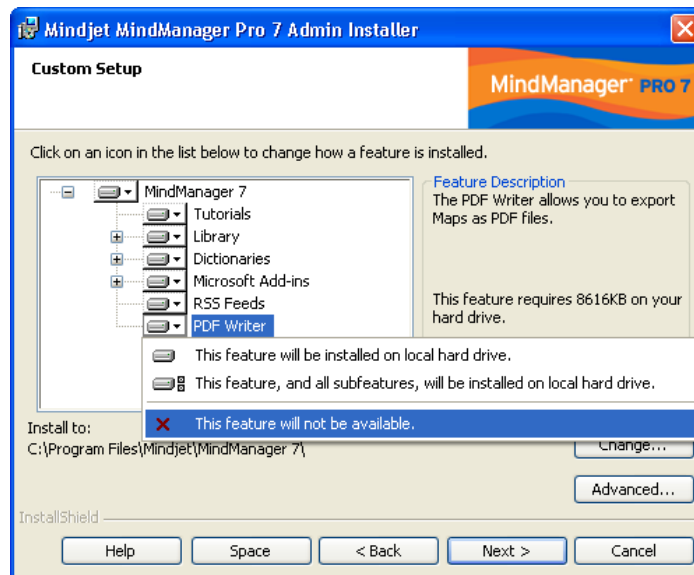
Disabling Default Features

To disable the default installation features:

1. Complete steps 1-5 in [Starting the Installation](#).
2. Select **Custom** and click **Next**.

The **Custom Setup** dialog appears.

3. In the tree, select a feature whose default installation you want to change.
4. Click the down arrow button .
5. Select the desired feature setting.



For each selected feature, a description and storage requirement appears. For example, you can choose to make RSS feeds unavailable, saving 325 kb on the local drive.

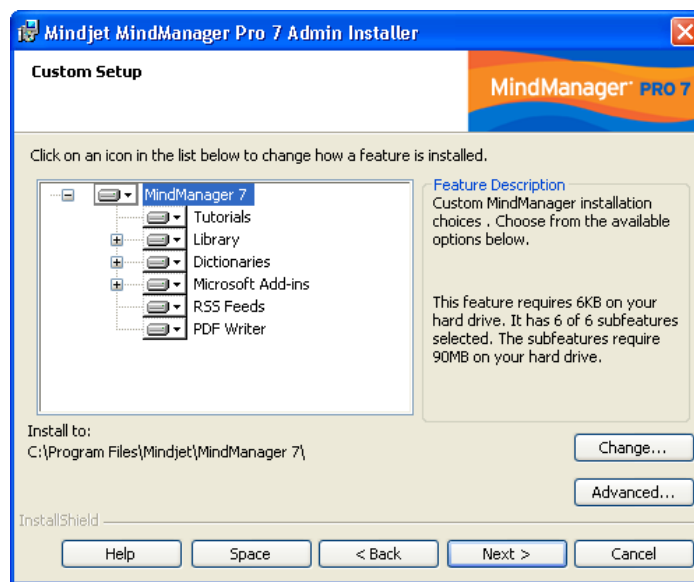
6. Repeat this process until you have made all of your feature customization choices.
7. Complete the installation as outlined in [Completing the Installation](#).

Changing the Default Installation Folder

To change the default installation folder:

1. Complete steps 1-5 in [Starting the Installation](#).
2. Select **Custom** and click **Next**.

The **Custom Setup** dialog appears.



3. Click **Change**.

The Change Current Destination Folder dialog appears.

4. Select the destination folder.
5. Click **OK**.

The new destination folder appears in the **Custom Setup** dialog.

6. Complete the installation as outlined in [Completing the Installation](#).

Deploying User Data and the Library to a Server

MindManager installs a "Library" folder containing:

- Background images
- Icons
- Clip art images
- Map parts

- Shapes
- Styles
- Templates
- Web export templates

The entire library consists of 29 MB. By default, these files are stored on a per-user basis in this folder:

```
C:\Documents and Settings\UserName\Local Settings\Application
Data\Mindjet\MindManager\7\Library\<language version>
```

where *UserName* is the current user's logon name.

You can store user data and the library in a network folder for various reasons in order to:

- Save space on users' systems
- Decrease the time required to run the program the first time
- Allow roaming users access to their customized libraries
- Assure that all users have a fixed, easily updatable set of library files

You can install these files once to a common location (perhaps in a read-only folder). Multiple users can then share the files, or a single user can access them from multiple machines. If a user needs to edit these files, install them in a directory with write privileges.

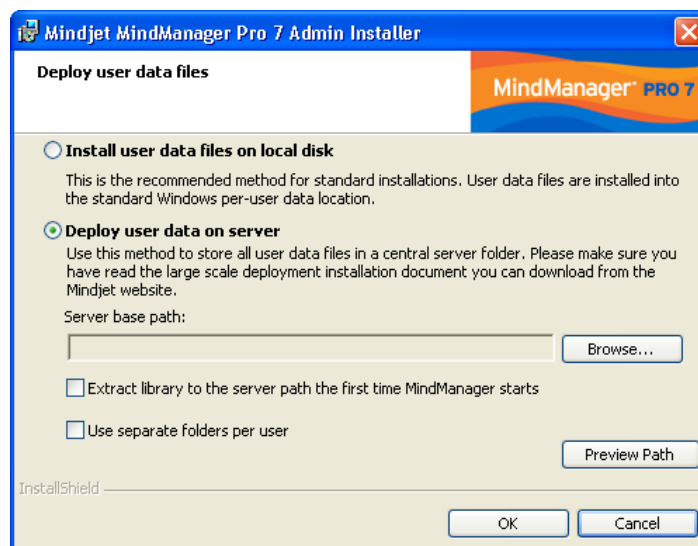
Note: You cannot install user data and the library to separate locations from the installation wizard. To install them separately, you must [install them from the command line](#).

To deploy user data and the library to a server:

1. Complete steps 1-5 in [Starting the Installation](#).
2. From the Custom Setup dialog, click **Advanced**.

The Deploy User Data Files dialog appears.

3. Select Deploy user data on server.



4. Click **Browse**.

The **Browse for Folder** dialog appears.

5. Select the destination folder.
6. Click **OK**.

The new directory appears in the Server base path field.

7. Choose from the following options:
 - Extract library to the server path the first time MindManager starts
 - Use Separate folders per user

We recommend selecting both of these options to avoid having to configure the user data folder and the library folder separately. You may want to create the user folders before installation, giving you the chance to make the files read only.

8. Click **OK** to close the dialog.
9. Complete the installation as outlined in [Completing the Installation](#).

These are all of the customization choices you have from the installer interface. You have more control if you [install MindManager from the command line](#).

Completing the Installation

To complete the standard installation:

1. Select **Complete** and click **Next**.

The **Ready to Install** dialog appears.

2. Choose your shortcut options.
3. Click **Install**.
4. After the installation is complete, choose from the following options:
 - Launch Mindjet MindManager Pro 7
 - Register Mindjet MindManager Pro 7
5. Click **Finish**.

Deploying from the Command Line

While you may wish to [customize your MindManager deployment from the installer interface](#), you have much greater control over the installation from the command line, including:

- [Configuring installation parameters](#)
- [Specifying what to install on a feature by feature basis](#)
- Enabling or disabling program functions
- [Specifying where to install libraries, tutorials, and user data](#)
- Specifying the MindManager license key or the location of the license file.

This section identifies what you may configure and provides examples of command line arguments for customizing your deployment. A sample installation command demonstrating most of these options is included in [Sample Setup Commands](#).

Here is a link for general command line options for the Microsoft installer:

http://msdn.microsoft.com/library/default.asp?url=/library/en-us/msi/setup/command_line_options.asp

Configuring Installation Parameters from the Command Line

You can set a number of public properties with command line options.

Table 8: Configuring Installation Parameters from the Command Line

Parameter	Description of Values
INSTALLDIR	Specifies where the program should be installed. For example: "C:\Program Files\Mindjet\MindManager 7\"
LICENSEKEY	Specifies the license key for your MindManager Pro 7 installation. Note: No validation is performed for this key, it is simply written to the registry. Users will start in trial mode, but on activation the dialog will be pre-populated with the license key. If the license key is not valid, MindManager Pro 7 runs in a restricted (trial) mode.

Parameter	Description of Values
LSDLICENSEFILEPATH	<p>Specifies the location of the license file for your MindManager Pro 7 installation. Optional: If this parameter is not specified, the license key location defaults to the INSTALLDIR.</p> <p>Users must have access to this location when they launch MindManager for the first time to allow MindManager to activate automatically. If the license file is inaccessible, activation is attempted each time the user subsequently starts MindManager.</p>
USERNAME	<p>Specifies the User Name for registering MindManager. Optional parameter; the Windows User Name will be used if this parameter is not supplied.</p>
COMPANYNAME	<p>Specifies the Company Name for registering MindManager. Optional parameter; the Windows Company Name will be used if this parameter is not supplied.</p>

Configuring Features from the Command Line

The admin setup is a Basic MSI project, not an InstallScript project; there is no record mode to run an install with `Setup.iss`. Basic MSI projects do not create or use a response file for silent installations. The article at this URL describes the use of response files for silent installations:

http://helpnet.installshield.com/robo/projects/helpplibdevstudio9/IHelpSetup_EXECmdLine.htm#bParam

Tip

- When configuring features from the command line, it is better to use `/s` silent installation in order to avoid conflicts with properties set through the installer interface.
- You can remove or add features from the command line by using `ADDLOCAL` or `REMOVE` on a feature by feature basis. To simplify the process, use `ADDLOCAL="ALL"` and then remove features you do not want. Examples are provided below.

Customizing the Installation with Setup.exe

You can use the following options to add or remove features from the command line `setup.exe`:

- `/v`=command line access to msi file
- `/qn`=when used with `/v` parameter, silent (no user interface) parameter passed to msi file

See this documentation for a complete list of command line options for `setup.exe`:

http://helpnet.installshield.com/Robo/BIN/Robo.dll?mgr=agm&tpc=%2Frobo%2Fprojects%2Finstallshield11helpplib%2FIHelpSetup_EXECmdLine.htm&

Tip

Here are examples of adding and removing features through the `setup.exe` file, using silent install:

- **Adding:** `<directory>\setup.exe /v"ADDLOCAL=\"MSWordAddin\" /qn"`
- **Removing:** `<directory>\setup.exe /v"ADDLOCAL=\"ALL\" \"REMOVE=\"MSWordAddin\" /qn"`

You can also string together multiple features for inclusion or removal:

```
<directory>\setup.exe  
/v"ADDLOCAL=\"All\" REMOVE=\"MSWordAddin,PDFWriter,RSS\" /qn"
```

Customizing the Installation with MSI

You can use these options to add or remove features from the command line with MSI.exe:

- /i=install mode
- /qn=silent (no user interface) parameter

Important:

On a VISTA system, security features require that you run silent install (/qn) as the **Administrator**, *not* as a member of the Administrator group.

See this documentation for a complete list of command line options for msixec.exe:

<http://helpnet.installshield.com/Robo/BIN/Robo.dll?mgr=agm&tpc=%2Frobo%2Fprojects%2Finstallshield11help%2FIHelpCmdLineMSI.htm&wnd=In>

Tip

Here are examples of adding and removing features through the msixec.exe file, using silent install:

- **Adding:** `msiexec /i "<directory>\filename.msi" ADDLOCAL="MSWordAddin" /qn`
- **Removing:** `msiexec /i "<directory>\filename.msi" ADDLOCAL="ALL" REMOVE="MSWordAddin" /qn`

You can also string together multiple features for inclusion or removal:

```
msiexec /i "<directory>\filename.msi" ADDLOCAL="ALL"
REMOVE="MSWordAddin,PDFWriter,RSS" /qn
```

Table 9: Configuring Features with MSI from the Command Line

Feature	Comments
Library	<p>Available add-ins</p> <p>The default add-in is Library, which installs add-ins below. You can also specify a subset.</p> <ul style="list-style-type: none"> • Images • Shapes • BackgroundImages • Icons • ImageGallery • Icons • TemplateOrganizer • Templates • WebTemplates • Styles • MapParts • MapMarkers <p>Example:</p> <pre>msiexec /i "<directory>\filename.msi" ADDLOCAL="ALL" REMOVE="WebTemplates" /qn</pre>
Dictionaries	<p>Available add-ins</p> <p>The default add-in is Dictionaries, which installs add-ins below. You can also specify a subset.</p> <ul style="list-style-type: none"> • Swedish • Spanish • NorwegianB • BrazilianPortuguese • Italian • Danish • Finnish • CanadianEnglish • USEnglish • UKEnglish • French • Dutch • German <p>Example :</p> <pre>msiexec /i "<directory>\filename.msi" ADDLOCAL="ALL" REMOVE="CanadianEnglish" /qn</pre>

Feature	Comments
Microsoft Add-Ins	<p>Available add-ins</p> <p>The default add-in is MSAddins, which installs add-ins below. You can also specify a subset.</p> <ul style="list-style-type: none"> • MSWordAddin • MSOutlookAddin • MSOutlookLinkerAddin • MSOutlookMapMinderLinkerAddin • MSProjectAddin • MSExcelLinkerAddin • MSVisioAddin • MSIEAddin <p>Example:</p> <pre>msiexec /i "<directory>\filename.msi" ADDLOCAL="ALL" REMOVE="MSProjectAddin" /qn</pre>
PDF Writer	<p>The add-in is PDFWriter</p> <p>Example:</p> <pre>msiexec /i "<directory>\filename.msi" ADDLOCAL="ALL" REMOVE="PDFWriter" /qn</pre>
RSS	<p>The add-in is RSS</p> <p>Example:</p> <pre>msiexec /i "<directory>\filename.msi" ADDLOCAL="ALL" REMOVE="RSS" /qn</pre>

Configuring Functions from the Command Line

During installation, you can disable some functions by setting the value to "0". For example:

```
msiexec /i "<directory>\Mindjet MindManager Pro 7 Admin.msi"  
/qn ONLINEHELP="0"
```

Table 10: Configuring Functions from the Command Line

Functions	Examples
Macro Support	The function name is MACROUI . Example (msi) msiexec /i "<directory>\Mindjet MindManager Pro 7 Admin.msi" /qn MACROUI="0"
Shortcuts	The function names are: <ul style="list-style-type: none">• SHORTCUTDESKTOP• SHORTCUTSTARTMENU• SHORTCUTQUICKLAUNCH Example: msiexec /i "<directory>\Mindjet MindManager Pro 7 Admin.msi" /qn SHORTCUTSTARTMENU="0"
Internet Access	The function name is INTERNETACCESS . Example (msi): msiexec /i "<directory>\Mindjet MindManager Pro 7 Admin.msi" /qn INTERNETACCESS="0" Example (setup.exe) <directory>\setup.exe /s /v"INTERNETACCESS=0 /qn"
Online Help	The function name is ONLINEHELP . Example (msi): msiexec /i "<directory>\Mindjet MindManager Pro 7 Admin.msi" /qn ONLINEHELP="0" Example (setup.exe): <directory>\setup.exe /s /v"ONLINEHELP=0 /qn"
UI Customization	The function name is UICUSTOMIZATION . Example (msi): msiexec /i "<directory>\Mindjet MindManager Pro 7 Admin.msi" /qn UICUSTOMIZATION="1" Example (setup.exe): <directory>\setup.exe /s /v"UICUSTOMIZATION=1 /qn"

Configuring Functions from the Registry

If you want, you configure some functionality in the registry before installing MindManager. The installer reads these keys and retains these settings during installation. After installation is complete, you can hand configure these settings as well. To disable a function, set the registry value to "0". Reset the value to "1" to re-enable the function. Each key is of the type REG_DWORD.

Table 11: Configuring Functions from the Registry

Functions	Examples
Macro Support	The registry key is MacroUiEnabled . Example: HKEY_LOCAL_MACHINE\Software\Mindjet\MindManager\7\Settings "MacroUiEnabled" (0)
Internet Access	The registry key is InternetConnectionEnabled . Example: HKEY_LOCAL_MACHINE\Software\Mindjet\MindManager\7\Settings "InternetConnectionEnabled" (0)
Online Help	The registry key is OnlineHelpEnabled . Example: HKEY_LOCAL_MACHINE\Software\Mindjet\MindManager\7\Settings "OnlineHelpEnabled" (1)
UI Customization	The registry key is EnableUserCustomization . Example: HKEY_LOCAL_MACHINE\Software\Mindjet\MindManager\7\Settings "EnableUserCustomization" (1)

Deploying User Data, the Library, and Tutorials

As discussed in [Deploying User Data and the Library to a Server](#), you may want to deploy user data and the library to a server. If you want to deploy the user data and library on separate servers, you must do so from the command line or by editing the registry.

Deploying User Data, the Library, and Tutorials from the Command Line

The following commands give you the ability to deploy user data, the Library, and tutorials to separate locations. Each option consists of a property, which, when given a command line value, writes to the registry. You can also predefine these options by creating and executing a registry script before a silent setup, as described in [Using Registry Keys to Deploy User Data Files](#).

Recall in the case of [installing tutorials](#) that storing them somewhere other than the default location can not only save memory, but allow access to tutorials that otherwise require Internet access.

Table 12: User Data Deployment Options

Command	Resulting Registry Entry
USERDATAPATH=" <u>user specified path</u> "	HKEY_LOCAL_MACHINE\Software\Mindjet\MindManager\7\Installer "LSDUserDataPath" " <u>user specified path</u> "
USERDATAPERUSERPATH="1"	Deploy user data in a per-user folder. 1=Enable 0=Default or disable HKEY_LOCAL_MACHINE\Software\Mindjet\MindManager\7\Installer "LSDUserDataPerUser" (1)
USERDATAPATHSUFFIX=" <u>user specified path</u> "	This folder is appended to the per-user folder. HKEY_LOCAL_MACHINE\Software\Mindjet\MindManager\7\Installer "LSDUserDataPathSuffix" " <u>user specified directory</u> "

Example:

```
msiexec /i "Mindjet MindManager Pro 7 Admin.msi"
USERDATAPATH="C:\Temp\UserData" USERDATAPERUSERPATH="1"
USERDATAPATHSUFFIX="MyUserData"
```

Table 13: Library Deployment Options

Command	Resulting Registry Entry
LIBRARIESPATH=" <u>user specified path</u> "	HKEY_LOCAL_MACHINE\Software\Mindjet\MindManager\7\Installer "LSDLibraryPath" " <u>user specified path</u> "
LIBRARIESPERUSERPATH="1"	Deploy libraries in a per-user folder. 1=Enable 0=Disable HKEY_LOCAL_MACHINE\Software\Mindjet\MindManager\7\Installer "LSDLibraryPerUser" (1)
LIBRARIESPATHSUFFIX=" <u>user specified directory</u> "	This folder is appended to the per-user folder. HKEY_LOCAL_MACHINE\Software\Mindjet\MindManager\7\Installer "LSDLibraryPathSuffix" " <u>user specified directory</u> "
LIBRARIESEXTRACT="1"	Extract libraries to path the first time MindManager starts. 1=Enable 0=Disable HKEY_LOCAL_MACHINE\Software\Mindjet\MindManager\7\Installer "LSDLibraryExtract" (1)

Example:

```
msiexec /i "Mindjet MindManager Pro 7 Admin.msi" LIBRARIESPATH
="C:\Temp\Libraries" LIBRARIESPERUSERPATH ="1"
LIBRARIESPATHSUFFIX ="MyLibraries" LIBRARIESEXTRACT="1"
```

Table 14: Tutorial Deployment Options

Command	Resulting Registry Entry
TUTORIALSLOCATION="<user specified path>	HKEY_LOCAL_MACHINE\Software\Mindjet\MindManager\7\Settings\TutorialsLocation "<user specified path>"

Example:

```
msiexec /i "Mindjet MindManager Pro 7 Admin.msi"
TUTORIALSLOCATION ="C:\Temp\Tutorials"
```

Deploying User Data from the Registry

During a silent (non-interactive) installation, you can deploy data user files by setting some registry values on the user's system in the registry key before running the installer:

```
HKEY_LOCAL_MACHINE\Software\Mindjet\MindManager\7\Installer
```

Table 15: User Data Registry Key Values

Registry Value	Data Value
LSDUserDataPath	See "Server base path", above. Examples: N:\User Data\All Users\Mindjet\MindManager\7 or N:\User Data (if LSDUserDataPerUser is set to 1)
LSDUserDataPerUser	0 = Do not use separate folders per user 1 = Do use separate folders per user
LSDUserDataPathSuffix	See "Append sub-path", above Example: Mindjet\MindManager\7 Only applies if LSDUserDataPerUser is set to 1

If you want to deploy all of the user data, including the library on a server, create a registry file named "MindManager Large-Scale Deployment Options.reg" like this:

```
REGEDIT4
[HKEY_LOCAL_MACHINE\SOFTWARE\Mindjet]
[HKEY_LOCAL_MACHINE\SOFTWARE\Mindjet\MindManager]
[HKEY_LOCAL_MACHINE\SOFTWARE\Mindjet\MindManager\7]
[HKEY_LOCAL_MACHINE\SOFTWARE\Mindjet\MindManager\7\Installer]
"LSDUserDataPath"="N:\\User Data\\All
Users\\Mindjet\\MindManager 7"
"LSDUserDataPerUser"=dword:00000001
"LSDUserDataPathSuffix"="User Data"
"LSDLibraryPath"=" N:\\All Users\\Mindjet\\MindManager 7"
"LSDLibraryPerUser"=dword:00000001
"LSDLibraryPathSuffix"="Library"
"LSDLibraryExtract"=dword:00000001
```

Then create a batch file like this, replacing "xxxxx-xxxxx-xxxxx-xxxxx-xxxxx" with a valid license key:

```
regedit /s "MindManager Large-Scale Deployment Options.reg"
msiexec.exe /i "MindManager Pro 7 Admin.msi" /qn
INSTALLDIR="C:\Program Files\Mindjet\MindManager 7\"
LICENSEKEY=" xxxxx-xxxxx-xxxxx-xxxxx-xxxxx "
```

Sample Setup Commands

The following sections provide sample commands in order to demonstrate various installation scenarios.

Simple Installation

This command simply runs the installer in the usual interactive mode.

```
Msiexec.exe /i "MindManager Pro 7 Admin.msi"
```

You can also run `MindManager Pro 7 Admin.msi` from Windows Explorer.

Silent Installation

This command silently runs the installer, supplying values for all required parameters.

```
Msiexec.exe /i "MindManager Pro 7 Admin.msi" /qn  
INSTALLDIR="C:\Program Files\Mindjet\MindManager 7\  
LICENSEKEY=" xxxxx-xxxxx-xxxxx-xxxxx-xxxxx "
```

Note that the "xxxx-xxxx-xxxx" portion of the license key must be replaced with a valid key. Optional parameters are `USERNAME` and `COMPANYNAME`.

Sample Customized Installation Using ADDLOCAL and REMOVE

Here is an example for a customized silent install, using `ADDLOCAL` and `REMOVE`:

```
Msiexec.exe /i "Mindjet MindManager Pro 7 Admin.msi" /qn /L*v  
"C:\MM7AdminSetup.log" INSTALLDIR="D:\Program  
Files\Mindjet\MindManager 7\  
LICENSEKEY=" xxxxx-xxxxx-xxxxx-xxxxx-xxxxx "  
USERNAME="John Doe" COMPANYNAME="Acme, Inc."  
ADDLOCAL="ALL" REMOVE="PDFWriter, MSWordAddin" MACROUI="0"  
INTERNETACCESS="0" UICUSTOMIZATION="0" ONLINEHELP="0"
```

Uninstallation

This command uninstalls MindManager: `Msiexec.exe /x "MindManager Pro 7 Admin.msi"`

Deploying with Active Directory

Deploying MindManager via Active Directory and Group policies is has limited supported at this time because:

- MindManager setup only supports Computer-based software installation
- Some MindManager properties can only be configured from the command line

You can use configuration tools such as Orca to:

- Configure properties from the property table
- Save the settings to a transform file (MST)
- Deploy it with the updated values

Here is a list of properties you can modify in the Property Table:

Table 16: Properties Editable in Properties Table

Property	Description/Default Setting
INTERNETACCESS=1/0	<ul style="list-style-type: none">• Allow internet access in MindManager• Default=1
LIBRARIESPATH=<defaultpath>	User can override default path.
LIBRARIESPATHSUFFIX=<defaultpath>	User can override default path.
LIBRARIESPERUSERPATH=0/1	<ul style="list-style-type: none">• Deploy libraries per user• Default=0
LIBRARIESEXTRACT=1/0	<ul style="list-style-type: none">• MindManager extracts libraries at first launch• Default=1
USERDATAPATH=<defaultpath>	User can override default path.
USERDATAPATHSUFFIX=<defaultpath>	User can override default path.
USERDATAPERUSERPATH=0/1	<ul style="list-style-type: none">• User Data deployed per user• Default=1
MACROUI=1/0	<ul style="list-style-type: none">• Enable Macros in UI• Default=1

Property	Description/Default Setting
ONLINEHELP=1/0	<ul style="list-style-type: none"> • Enable online help • Default=1
REBOOTISREQUIRED=No/Yes	<ul style="list-style-type: none"> • Require reboot after installation • Default=No
TOPICALERTSLINKER=1/0	<ul style="list-style-type: none"> • Enable topic alerts linker • Default=1
UICUSTOMIZATION=1/0 (default=1)	<ul style="list-style-type: none"> • Enable UI customization • Default=1
SHORTCUTDESKTOP=1/0 (default=1)	<ul style="list-style-type: none"> • Create Desktop shortcut • Default=1
SHORTCUTQUICKLAUNCH=1/0	<ul style="list-style-type: none"> • Create QuickLaunch shortcut • Default=1
SHORTCUTSTARTMENU=1/0 (default=1)	<ul style="list-style-type: none"> • Create StartMenu shortcut • Default=1

We recommend:

- Saving these settings to the transform file as a backup, rather than directly to the MSI
- Deploying MindManager Pro 7 on a per-machine basis only, avoiding the possibility that the machines with multiple users get multiple copies of MindManager installed
- Creating a policy for “Always install elevated” otherwise the installation may fail
- On the features table, setting the InstallLevel for the PDFWriter to 101 or higher if you want to disable it

Deploying with Windows Server 2003

You can install MindManager Pro 7 with Windows Server 2003 running Terminal Services and then deploy it to variety of client machines.

To install MindManager 7 on a Windows Server 2003 running Windows Terminal Services (WTS):

1. Log on to the Windows Terminal Server as an administrator.
2. Launch Mindjet MindManager Pro 7 Admin.msi.
 - We recommend using the Add/Remove Programs applet in the Windows Control Panel.
 - Avoid running the installer directly from Windows Explorer unless you are familiar with using the "change user /install" and "change user /execute" commands.

3. Select Add New Programs and then CD or Floppy.

The automatic procedure does *not* find the MindManager setup program.

4. For the Run Installation Program dialog, click Browse.
5. In the **Browse** dialog:
 - Change Files of type to Programs.
 - Navigate to the location of the MindManager installer.
 - Select Mindjet MindManager Pro 7 Admin.msi.
 - Click **Open** and then **Next** to start the installer.
6. In the **Customer Information** dialog, leave the **User Name** blank or chose a "generic" name.

The user can customize this in MindManager by entering an **Organization** name and the **MindManager License Key**.

7. In the **Setup Type** dialog, choose **Complete** or **Custom** as desired.

For details about customization, see [Deploying MindManager Pro 7 Using the Installation Wizard](#).

8. Complete the installation as outlined in [Completing the Standard Installation](#).

You can now run MindManager on the server with the Windows Remote Desktop Connection client.

MindManager Pro 7 runs in full color mode and does not support 256-color mode. For best results run the terminal server clients in full color mode as well. Deploying MindManager 7 Pro under Windows 2000 server will function, but with less than optimal results.

Tip

For known issues operating MindManager with Windows Server 2003, consult: “Known Issues Running MindManager on a Windows Terminal Server or Citrix MetaFrame Presentation Server” at:

http://www.mindjet.com/us/knowledge_base/questions/28/

Deploying with Citrix Presentation Server

The Citrix MetaFrame Presentation Server is a sophisticated terminal server environment built on top of the Windows Terminal Services provided by Windows Server. This is currently the only tested and supported Citrix platform for MindManager (although other combinations may work).

Tip

For known issues operating MindManager with Citrix MetaFrame Presentation Server, consult: [Known Issues Running MindManager on a Windows Terminal Server or Citrix MetaFrame Presentation Server](http://www.mindjet.com/us/knowledge_base/questions/28/) at:

http://www.mindjet.com/us/knowledge_base/questions/28/


Basic Installation for the Citrix Desktop

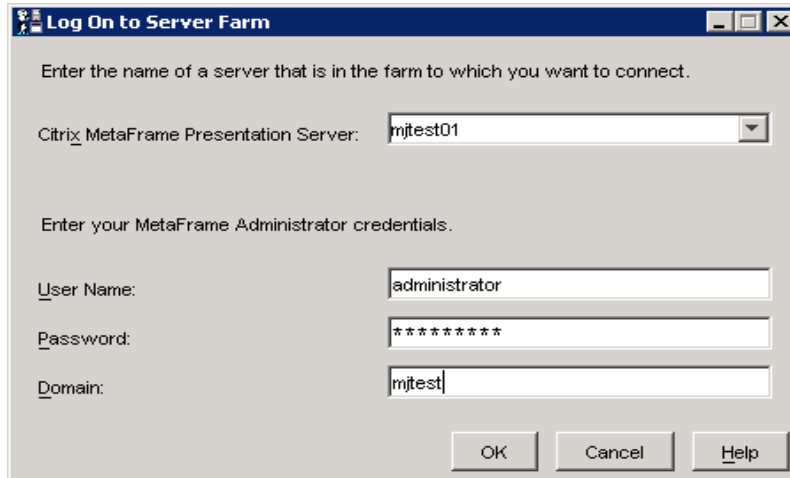
For better Citrix performance, do not install MindManager Pro 7 on a C: drive. After installation, MindManager appears as part of the Citrix Desktop – a single window containing icons for all the published applications.

Advanced Installation of a "Seamless" Window

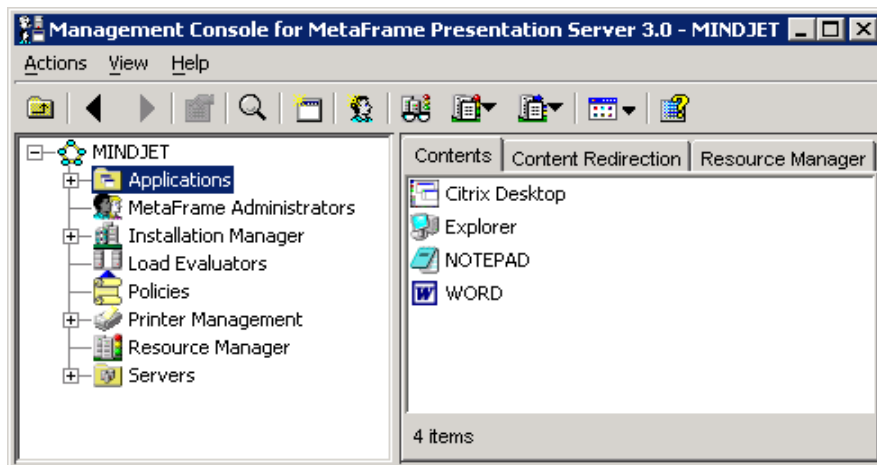
You can also install MindManager to Citrix as a seamless individual application window, instead of installing as part of the Citrix desktop, as described above.

To install MindManager as a "seamless" individual application window:

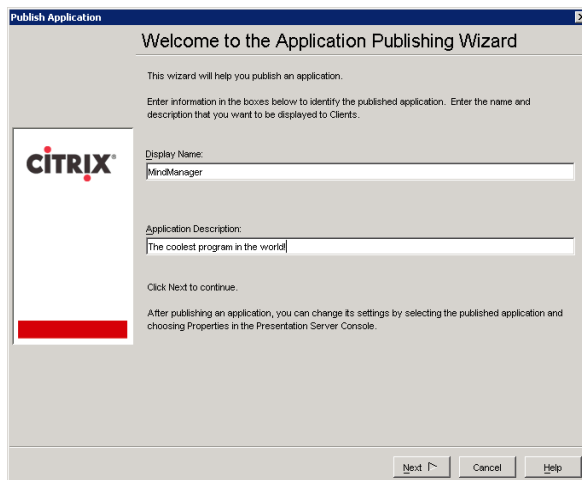
1. Install MindManager on a Windows Server 2003 running Windows Terminal Services (WTS)
2. Click the **Presentation Server Console** button  from the Citrix toolbar.
3. Log on to the server.



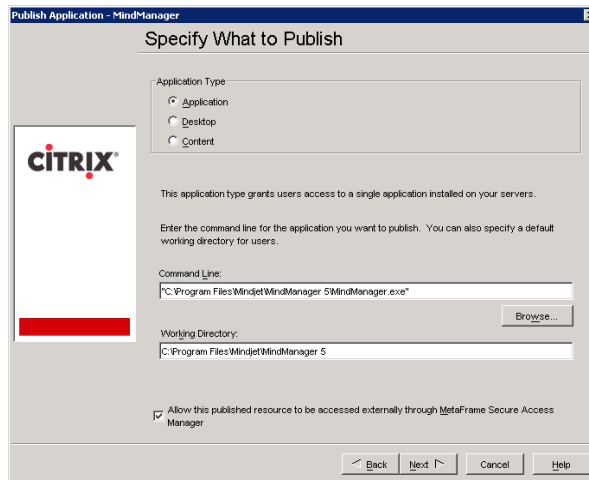
4. In the tree, select **Applications**.



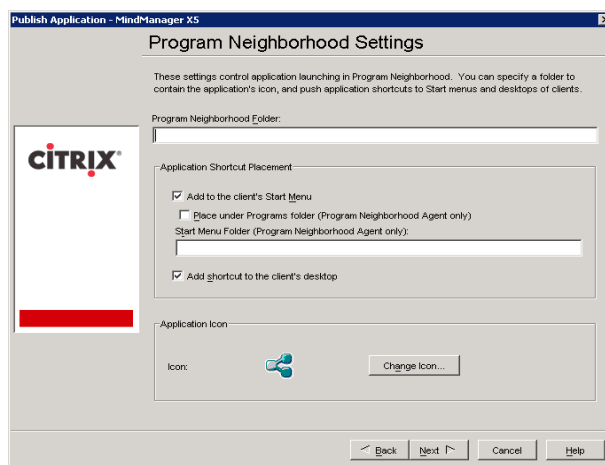
5. Right-click **Applications**.
6. Select **Publish Applications**. (The Application Publishing Wizard appears).



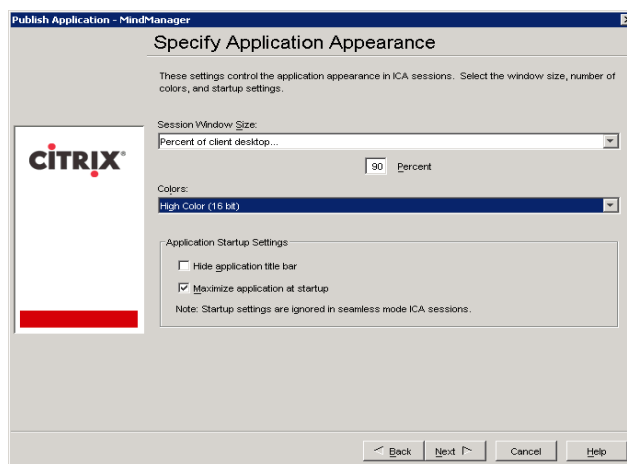
7. Specify what to publish.



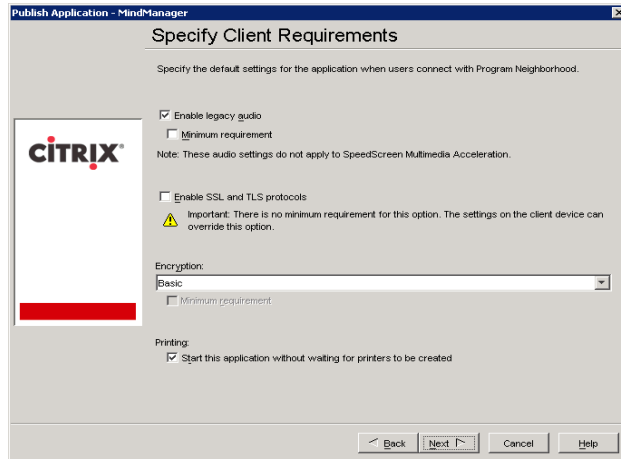
8. Define the Program Neighborhood Settings.



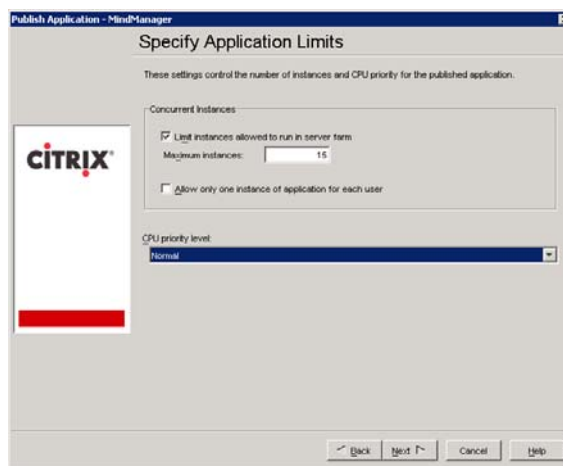
9. Define the Application Appearance options. (Set to **High Color** or **True Color**).



10. Specify special client requirements. (Default settings are fine).



11. Specify the number of licenses you have purchased in the "Maximum instances" field.



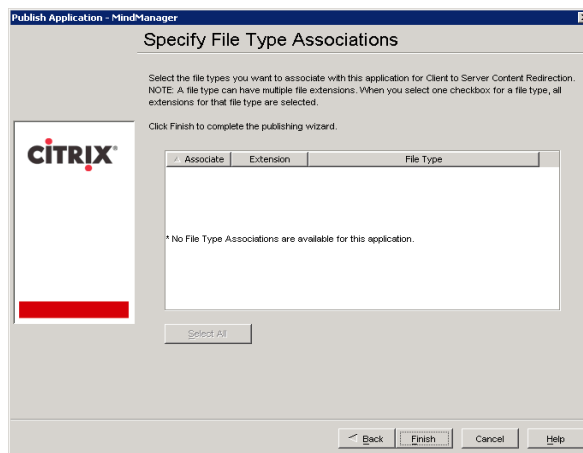
12. Specify which servers will deploy MindManager.



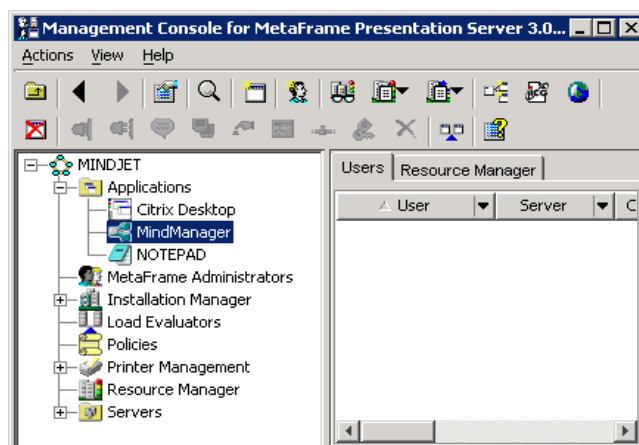
13. Specify users. (We recommend doing this by group to ease adding single users).



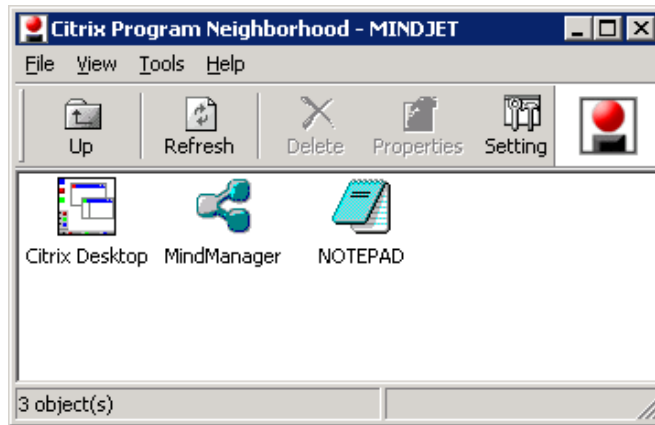
14. Leave the File Type Associations page empty; MindManager is registered on the server.



Once you are done, you should see the MindManager application in the Applications section:



The MindManager icon now appears in authorized users' Citrix Program Neighborhood.



For more configuration options, please consult your Citrix documentation.

Administering MindManager

There are other administrative issues involved in deploying MindManager Pro 7 on a large scale. You can address many of them using administrative tools and methods described below.

Managing Add-Ins

MindManager uses a number of add-in DLLs. The Add-Ins are automatically registered when MindManager is installed. On startup, the Add-Ins check for any other required resources (e.g. the supported version(s) of Microsoft Word). They enable or disable themselves as appropriate. If an add-in fails to start, it is automatically removed from the MindManager list of add-ins (but not from the disk).

Registering or Unregistering Add-Ins from the Command Line

To unregister the MindManager Word add-in:

1. Select Start>Run.
2. Enter the command: `regsvr32 /u "C:\Program Files\Mindjet\MindManager 7\Mm6Word.dll"`

To restore an unregistered add-in: the MindManager Word add-in,

3. Select Start>Run.
4. Enter the command: `regsvr32 "C:\Program Files\Mindjet\MindManager 7\Mm6Word.dll"`

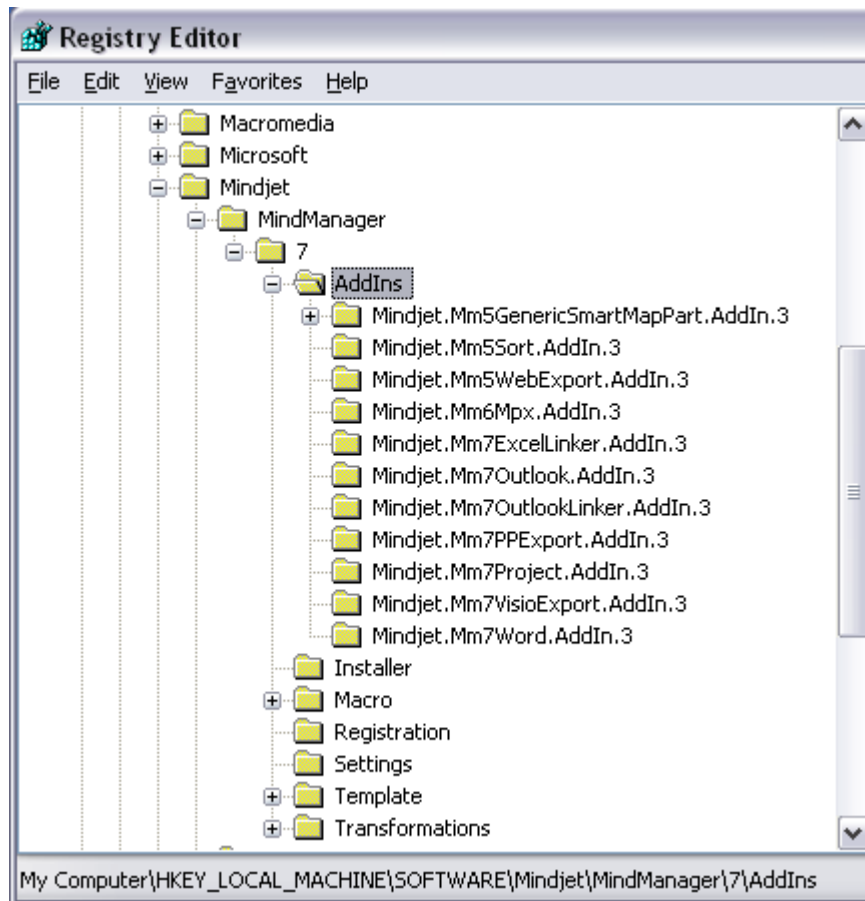
Managing Add-Ins from the Registry

Users can enable and disable add-ins via the MindManager Tools > Add-Ins command. However, if desired it is possible to disable or remove individual MindManager add-ins via the Windows Registry.

The Registry Add-In List

The list of add-ins that MindManager loads at startup is in the Registry at:

```
HKEY_LOCAL_MACHINE\SOFTWARE\Mindjet\MindManager\7\AddIns
```



Removing or Restoring Add-Ins from the Registry

To remove a MindManager add-in (i.e. make it "invisible" to MindManager) delete its registry subkey.

To remove the Word add-in, delete the following key:

```
HKEY_LOCAL_MACHINE\SOFTWARE\Mindjet\MindManager\7\AddIns\Mindjet.Mm7Word.AddIn.3
```

This makes the add-in "invisible" to MindManager so it will not be loaded on program startup and will not be seen in the list of add-ins in the Tools -> Add-Ins dialog. However, the add-in DLL files still exist on the hard drive along with MindManager.

Another way to remove an add-in is to unregister it as described in [Registering or Unregistering Add-Ins from the Command Line](#). We do not recommend deleting the add-ins DLLs since they will be restored automatically the next time the program is run via its shortcut.

Enabling or Disabling Add-Ins from the Registry

Users can disable or enable a given add-in directly from MindManager via the Tools -> Add-Ins command. Add-ins can also be disabled via the Windows Registry as described below.

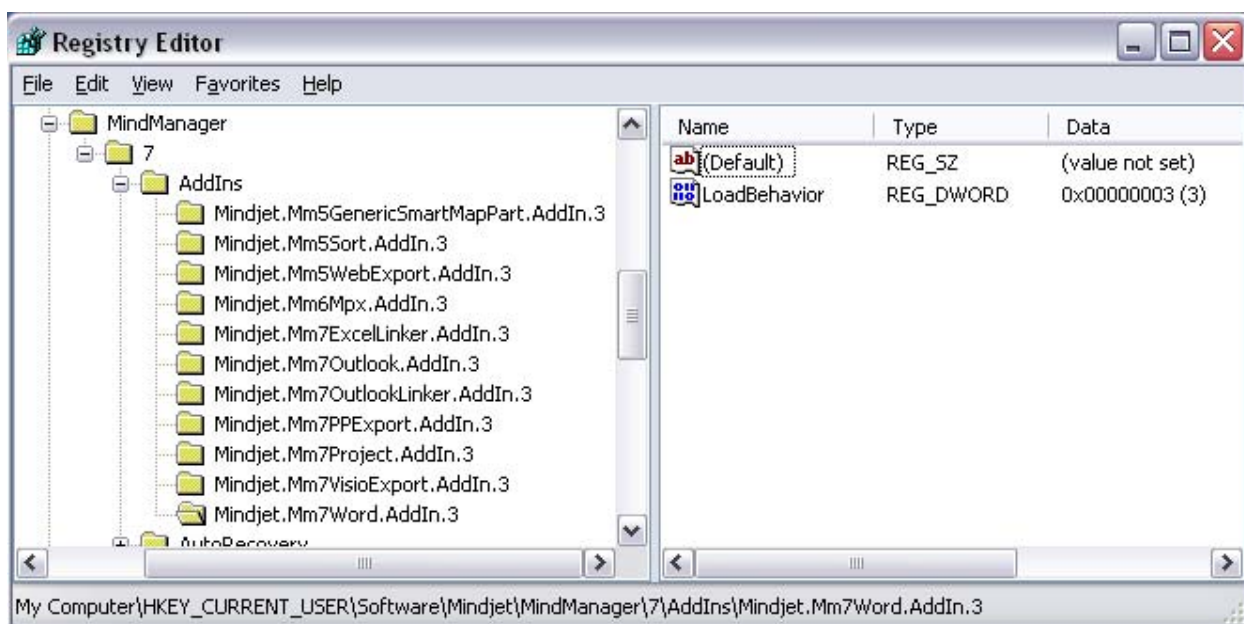
There are two keys to consider when disabling an add-in for a given user:

```
HKEY_LOCAL_MACHINE\SOFTWARE\Mindjet\MindManager\7\AddIns\AddInName
```

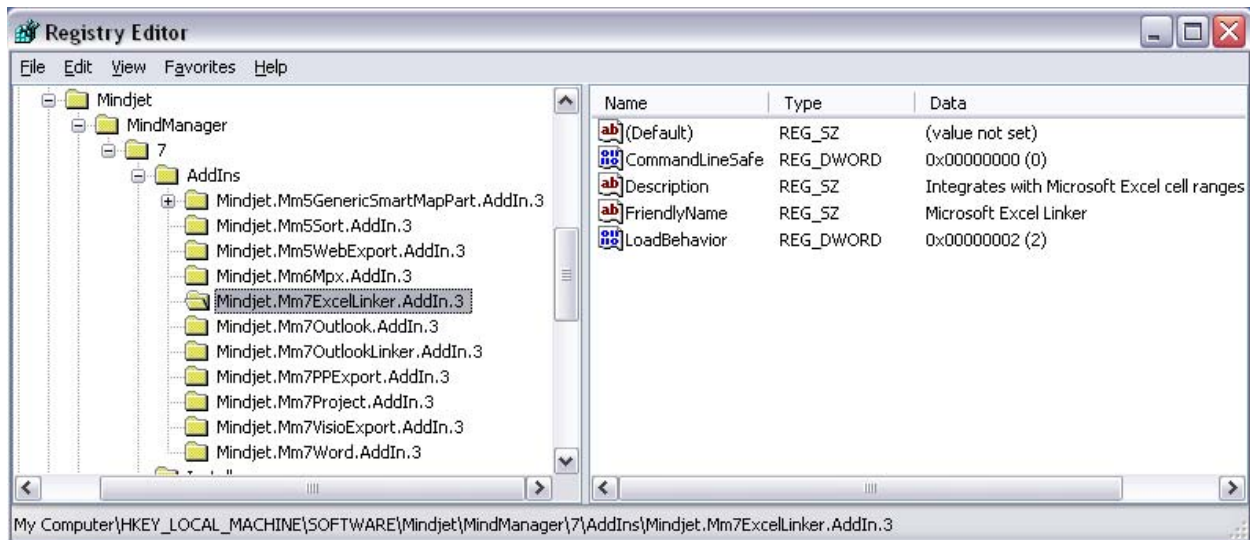
```
HKEY_CURRENT_USER\SOFTWARE\Mindjet\MindManager\7\AddIns\AddInName
```

where *AddInName* is the actual name of the add-in (e.g. Mindjet.Mm6Word.AddIn.1).

When a given user starts MindManager, the program checks first in the HKEY_CURRENT_USER subkey for a "LoadBehavior" value. If it exists, it is used.



If it does not exist, MindManager copies the LoadBehavior value from the HKEY_LOCAL_MACHINE subkey to the HKEY_CURRENT_USER subkey and then uses that value.



Therefore, to disable an add-in for the current user, set the LoadBehavior value in the HKEY_CURRENT_USER subkey to 0.

To disable the add-in for all new users, set the LoadBehavior value in the HKEY_LOCAL_MACHINE subkey to 0.

Note: This has no effect on users that have already run MindManager at least once. For them you must set LoadBehavior in the HKEY_CURRENT_USER subkey.

Similarly, setting LoadBehavior to 2 enables the add-in again.

Managing Microsoft Office Add-Ins

When MindManager is installed, it registers add-ins for MS Office products. The location of this add-in registration in the Windows Registry depends on the application and the add-in. For example, the MindManager add-in for Microsoft Word is registered on a per-machine basis (so all users of the machine have it) at:

```
HKEY_LOCAL_MACHINE\SOFTWARE\Microsoft\Office\Word\Addins\Mindjet.
Mm7Word.AddIn.3
```

Note that Word handles the Tools -> "COM Add-Ins" command and user interface differently than MindManager. In Word, if an add-in is registered in HKEY_LOCAL_MACHINE (HKLM), then it is *not* displayed in the COM Add-Ins dialog. If an add-in is registered in HKEY_CURRENT_USER (HKCU), it is displayed in the dialog and can be turned off and on. If the add-in is registered both in HKLM and HKCU, Word ignores the HKCU entry and just uses the HKLM entry.

The registry data values for the Microsoft program add-ins are the same as described for the MindManager add-ins and can be edited in a similar fashion.

Managing MindManager Pro 7 from the Registry

MindManager Pro 7 supports registry settings to make it easier for system administrators to control the MindManager environment presented to their users. Most MindManager Pro 7 registry settings can be set via the MindManager Pro 7 user interface. These registry settings relevant to Large-Scale Deployment are *not* available from the MindManager Pro 7 user interface. See also the user data options, which can also be set via registry settings.

HKEY_LOCAL_MACHINE Settings

The following MindManager 7 registry settings are used on a per-machine basis:

HKEY_LOCAL_MACHINE\SOFTWARE\Mindjet\MindManager\7\Registration

Table 17: HKEY_LOCAL_MACHINE Registration Values

Value Name	Type	Value Data
ShowActivatedLicense	REG_DWORD	0 to not show the MindManager user the license key being used or allow it to be changed. 1 to show the license key.
ChangeActivatedLicense	REG_DWORD	0 to prevent changing the MindManager license key. 1 to allow the license key to be changed.

The following MindManager 7 registry settings are used on a per-machine basis:

HKEY_LOCAL_MACHINE\SOFTWARE\Mindjet\MindManager\7\Settings

Table 18: HKEY_LOCAL_MACHINE Settings

Value Name	Type	Value Data
LocalUserDataDirectory	REG_SZ	Path to copy user data files (e.g. Image Library files, etc.)at first launch. May contain environment variables. For example: N:\UserData\%USERNAME%\MindManager 7 If no path is specified, then this path is assumed: %USERPROFILE%\Local Settings\Application Data\MindManager\7 This setting can be overridden by the same setting in HKEY_CURRENT_USER (see below) or by the LSDUserDataPath setting described earlier.

PerUserInstallation	REG_DWORD	0 for per-machine license key management. 1 for per-user license key management.
----------------------------	-----------	---

HKEY_CURRENT_USER Settings

The following MindManager 7 registry settings are used on a per-user basis:

HKEY_CURRENT_USER\SOFTWARE\Mindjet\MindManager\7\Settings

Table 19: HKEY_CURRENT_USER Settings

Value Name	Type	Value Data
AllowUpdateCheck	REG_DWORD	0 to hide the Help, Check for Updates command. 1 to show this command. 2 to show this command only if the user has write privileges to HKEY_LOCAL_MACHINE (default)
DisableAnimation	REG_DWORD	0 to allow animation of maps for smoother scrolling. 1 to disable animation of maps for one-jump scrolling which is less graphics intensive and perhaps more desirable in a low-bandwidth Windows Terminal Server environment.
LocalUserDataDirectory	REG_SZ	Path to copy user data files (e.g. Image Library files, etc.) to when a new user first starts MindManager. May contain environment variables. For example: N:\UserData\%USERNAME%\MindManager 7 If no path is specified, then this path is assumed: %USERPROFILE%\Local Settings\Application Data\MindManager\7 This setting can be overridden by the LSDUserDataPath setting described earlier.

Managing MindManager Pro 7 with Event Macros

MindManager Pro 7 can trigger certain Event Macros that can help system administrators monitor the usage of the program more carefully.

These macros are examples only. You need to customize them for your environment.

Microsoft added the Outlook Object Model Guard to Outlook 2002, forcing the display of a message informing the user that a program is trying to send a message via Outlook. The user must approve the send. This behavior can be controlled by Outlook system policies.

Table 20: Event Macros

Event Name	When Fired
OnApplicationStarted	At the end of InitInstance, only when started in "normal" mode, not /RegServer, /UnregServer, etc.)
OnExpiredTrialStarted	Just before the "Trial Expired" dialog
OnFirstUse	Just before we install "per-user data"
OnBuyButtonPressed	Just before the "Buy MindManager" dialog is displayed

When a macro event is fired, 0 or more macros are run. The mapping of macro event names to macro filenames is determined on startup.

On startup, MindManager Pro 7 looks in the registry at

```
HKEY_LOCAL_MACHINE\SOFTWARE\Mindjet\MindManager\7
```

for a key named **Event Macros**. If it is found, we might expect to find keys such as these:

```
Event Macros\
    OnApplicationStarted\
        EventMacro_OnApplicationStarted.mmbas
        EventMacro_OnApplicationStartedTwo.mmbas

Path="C:\Temp\EventMacro_OnApplicationStartedTwo.mmbas"
    OnBuyButtonPressed\
        EventMacro_OnBuyButtonPressed.mmbas
    OnExpiredTrialStarted\
        EventMacro_OnExpiredTrialStarted.mmbas
    OnFirstUse\
        EventMacro_OnFirstUse.mmbas
```

Each event key can have 0 or more macro key names. Each macro key can have an *optional* "Path" value. If the "Path" value is not there, then the key name is the path. If the path is a relative path (e.g.

"EventMacro_OnApplicationStarted.mmbas"), it is converted to an absolute path relative to the default macro folder for the user (e.g. "C:\Documents and Settings*UserName*\Local Settings\Application Data\Mindjet\MindManager\7\macros").

If the "Event Macros" key is not in the registry, then MindManager looks for event macros in the default macro folder (see above) with a name of the form:

```
EventMacro_<EventName>.mmbas
```

For example:

```
EventMacro_OnApplicationStarted.mmbas
```

Therefore, it is possible to get macro events to run a macro simply by putting macros with the proper name in the user's macro folder. However, for most typical IT uses, the "Event Macros" key will be used since this can point to macros on some network drive, for example.

For example, this "EventMacro_OnApplicationStarted.mmbas" macro uses the Outlook object model to send a notification email:

```
'#Uses "EventMacro_Uutilities.mmbas"
Sub Main
    SendNotificationEmail "MindManager event: Application
Started"
End Sub
```

Where the "EventMacro_Uutilities.mmbas" file contains:

```
' Utilities for use with MindManager event macros

Public Sub SendNotificationEmail(eventString As String)
    ' Sends the subject string to the appropriate IT person
    ' to notify them of the MindManager event that just
    occurred

    ' Get access to our email program
    Dim outlookApp As Outlook.Application
    Set outlookApp = New Outlook.Application

    ' Create a message
    Dim message As Outlook.MailItem
    Set message = outlookApp.CreateItem(olMailItem)
    message.To = "System Administrator"
    message.Subject = eventString
    message.Body = eventString

    ' Send the message
    message.Send
```

End Sub

Managing User Licenses

Each MindManager Pro 7 user must have a license. Please contact your reseller or MindManager Pro 7 sales representative for licensing terms appropriate for Large-Scale Deployment. MindManager Pro 7 does not include any special support for proprietary third-party license management software.

MindManager can check and administer license keys on a per-user or per-machine basis. MindManager first looks for a license key in:

```
HKEY_CURRENT_USER\SOFTWARE\Mindjet\MindManager\7\Registration\S  
lpLicenseKey
```

If one is not found, then it looks in

```
HKEY_LOCAL_MACHINE\SOFTWARE\Mindjet\MindManager\7\Registration\  
SlpLicenseKey
```

The default MindManager installation administers license keys on a per-machine basis. A license key is entered or a license file is copied to the machine after the program is installed. Then MindManager is activated, and all users of that machine have access to the program via that license key.

To achieve per-user license key administration for MindManager:

1. Install MindManager with no license key or license file: Use the installation wizard (which does not ask for a key), or use command-line installation without specifying a license key or license file.

Or, set the registry key: HKEY_LOCAL_MACHINE\SOFTWARE\Mindjet\MindManager\7\Settings\PerUserInstallation to 1 after installation. This setting instructs MindManager to save any license key the user enters to the HKCU setting instead of the HKLM setting.

2. The administrator should put the user's license key in the user's HKCU registry setting, above, or communicate the user's license key to them and let the user enter the license key in the license key dialog that is automatically displayed when the user activates MindManager.

Policies Support

MindManager does not offer official Windows Policies support.