



# Large-Scale Deployment Guide

# Abstract

This document provides complete information about how to customize and administer large-scale deployments of MindManager. Topics include:

- Mindjet MindManager [components](#)

- Understanding [large-scale deployment strategies](#)

- Deploying MindManager using the [installation wizard](#) or from the [command line](#)

- Deploying MindManager with [Windows Active Directory](#)

- Deploying Mind Manager with [Windows Server running Terminal Services](#)

- Deploying MindManager with [Citrix Presentation Server](#)

Document Version 10.0.1

© 2011 Mindjet LLC. All Rights Reserved.

Mindjet MindManager Large Scale Deployment Guide

Version 10.1.0

January 19, 2012

# Contents

<b>Abstract .....</b>	<b>ii</b>
<b>Contents .....</b>	<b>iii</b>
<b>List of Tables .....</b>	<b>vi</b>
<b>About This Guide .....</b>	<b>vii</b>
Getting Help .....	vii
<b>System Requirements .....</b>	<b>1</b>
<b>Understanding Deployment Strategies .....</b>	<b>3</b>
Running the Standard Setup Manually or Automatically .....	3
Running the Admin Setup Manually or Automatically .....	3
Deploying MindManager with Active Directory.....	4
Deploying MindManager with Windows Server .....	4
Deploying MindManager with Citrix Presentation Server.....	4
Using System Management Software and a Custom Setup.....	4
Deploying MindManager on a Shared Network Drive .....	5
<b>Using the Admin Setup .....</b>	<b>6</b>
Required Software.....	7
Required Permissions and Privileges.....	7
Differences between the Standard and Admin Setups.....	8
Installing MindManager : An Overview .....	8
Per-machine setup.....	8
Per-user setup .....	9
<b>What Gets Installed .....</b>	<b>10</b>
MindManager Components .....	11
Library .....	11

Dictionaries .....	11
Tutorials .....	11
PDF-XChange .....	12
User Configuration Files .....	12
Shortcuts and Start Menu items .....	13
Shared System Software .....	13
Third-Party Software .....	14
Java Runtime Environment.....	17
Registry Keys.....	18
<b>What Remains After Uninstallation.....</b>	<b>21</b>
Remaining Files, Folders, and Software Components .....	21
Remaining Registry Keys .....	22
<b>Deploying with the Installation Wizard.....</b>	<b>24</b>
Starting the Installation.....	24
Customizing the Installation.....	25
Disabling Default Features .....	25
Changing the Default Installation Folder.....	26
Deploying User Data and the Library to a Server .....	27
Completing the Installation .....	29
<b>Deploying from the Command Line .....</b>	<b>30</b>
Configuring Installation Parameters from the Command Line .....	30
Configuring Features from the Command Line .....	31
Customizing the Installation with Setup.exe .....	31
Customizing the Installation with MSI.....	32
Configuring Functions from the Command Line .....	36
Configuring Functions from the Registry .....	36
Deploying User Data and the Library .....	39
Deploying User Data and the Library from the Command Line.....	39
Deploying User Data from the Registry .....	40
Sample Setup Commands.....	41
Simple Installation .....	41
Silent Installation .....	41
Sample Customized Installation Using ADDLOCAL/REMOVE ...	41
Uninstallation .....	42
<b>Deploying with Active Directory .....</b>	<b>43</b>

<b>Deploying with Windows Server .....</b>	<b>45</b>
<b>Deploying with Citrix Presentation Server .....</b>	<b>48</b>
Basic Installation for the Citrix Desktop .....	48
Advanced Installation of a "Seamless" Window .....	48
<b>Administering MindManager .....</b>	<b>53</b>
Managing Add-Ins .....	53
Registering or Unregistering Add-Ins from the Command Line ....	53
Managing Add-Ins from the Registry.....	53
The Registry Add-In List.....	55
Removing or Restoring Add-Ins from the Registry .....	55
Enabling or Disabling Add-Ins from the Registry.....	56
Managing Microsoft Office Add-Ins .....	58
Managing MindManager from the Registry .....	59
HKEY_LOCAL_MACHINE Settings .....	59
HKEY_CURRENT_USER Settings .....	60
Managing MindManager with Event Macros.....	61
Managing User Licenses .....	62
Policies Support.....	62
SharePoint Site Connection.....	62

# List of Tables

Table 1: System Requirements for MindManager	1
Table 2: Configuration Files	12
Table 3: Location of Shared System Components	13
Table 4: Third-Party Software Overview	14
Table 5: MindManager Registry Key Overview	18
Table 6: Remaining Files, Folders, and Software components	21
Table 7: Remaining Registry Keys	22
Table 8: Configuring Installation Parameters from the Command Line	30
Table 9: Configuring Features with MSI from the Command Line	34
Table 10: Configuring Functions from the Command Line	36
Table 11: Configuring Functions from the Registry	37
Table 12: User Data Deployment Options	39
Table 13: Library Deployment Options	39
Table 14: Tutorial Deployment Options	Error! Bookmark not defined.
Table 15: User Data Registry Key Values	41
Table 16: Properties Editable in Properties Table	44
Table 17: HKEY_LOCAL_MACHINE Registration Values	59
Table 17: HKEY_LOCAL_MACHINE Settings	60
Table 19: HKEY_CURRENT_USER Settings	60
Table 20: Event Macros	61

# About This Guide

Many Mindjet customers have requested support for customized deployment of MindManager to large numbers of client machines. The Admin MSI supports the following options:

- Running the [standard setup](#) manually or automatically
- Running the [admin setup](#) manually or automatically
- Deploying MindManager using the [installation wizard](#)
- Deploying MindManager from the [command line](#)
- Deploying MindManager with [Windows Server running Terminal Services](#)
- Deploying MindManager with [Citrix Presentation Server](#)
- Deploying MindManager with Windows Active Directory (limited support\*)

This deployment option is not supported:

- Install the program on a Shared Network Drive

Check with your Mindjet support representative for more information.

## Getting Help

For technical support with this product, go to <http://www.mindjet.com/support>. Here you will find links to the Knowledge Base articles, User Forums, and other online resources. You can also submit a support request for additional assistance.

# System Requirements

The following are the hardware and software requirements for MindManager:

**Table 1: System Requirements for MindManager**

SYSTEM REQUIREMENTS:	SUPPORTED OPERATING SYSTEMS:	ADDITIONAL REQUIREMENTS TO USE CERTAIN FEATURES:
<ul style="list-style-type: none"> <li>IBM or compatible Pentium® processor (1 GHz or greater)</li> <li>1 GB RAM or greater</li> <li>300 MB disk space</li> <li>SVGA (1024 x 768/16-bit color or greater)</li> <li>Microsoft .NET 3.5 or higher</li> </ul>	<ul style="list-style-type: none"> <li>Microsoft® Windows® 7 32-bit and 64-bit* (includes Service Pack 1 released in Feb, 2011)</li> <li>Microsoft Windows Vista® SP2 32-bit</li> <li>Microsoft Windows XP SP3 32-bit</li> </ul> <p><b>Large Scale Deployments</b></p> <ul style="list-style-type: none"> <li>Citrix MetaFrame Presentation Server 4.5 and above (e.g. 5.0)</li> <li>Citrix XenApp Version 6</li> <li>Microsoft Windows Server 2008 R2 64-bit and later</li> <li>Microsoft Windows Server® 2003 32-bit</li> </ul>	<ul style="list-style-type: none"> <li>Microsoft Office Professional 2003, 2007, or 2010*</li> <li>Microsoft Project® 2003, 2007, or 2010*</li> <li>Microsoft Internet Explorer® 7.0 or greater</li> <li>Mozilla® Firefox® 3.5 or greater</li> <li>Google Chrome™ 8.0 or greater</li> <li>Adobe® Acrobat® 9.0 or greater</li> <li>Adobe Flash® Player 10 or greater</li> <li>Internet Connection</li> </ul> <p>* 32-bit Microsoft Office recommended (for "Send to MindManager" functionality).</p>

For deploying Mindjet MindManager in a terminal server environment, the following are prerequisites:

- **Windows Server 2008 running Terminal Services**  
**or**
- **Citrix MetaFrame Presentation Server 4.5 and above 32-bit , or XenApp 6 64-bit**

When using this method, each client machine must also meet the software and hardware requirements. When running MindManager on a terminal server, the client must be able to connect and handle RDP. The server requirements depend on the number of clients.

# Understanding Deployment Strategies

This section describes different deployment strategies, including their basic technologies, advantages, limitations and their level of support.

## Running the Standard Setup Manually or Automatically

You can deploy MindManager on a machine-by-machine basis using the standard setup (MindManager.exe) by installing MindManager from the physical CD or from a centrally accessible server. The standard setup is robust, interactive, and user-friendly, but does not support customized deployment.

Using the standard setup has these advantages:

- The program installs and operates properly on supported systems
- It requires no additional software or server resources
- Users with local administration privileges can manage the update process individually

And these disadvantages:

- Manual installation is time-consuming
- The installed software uses up disk space on each user's system
- Centralized administration becomes more difficult

## Running the Admin Setup Manually or Automatically

The MindManager Admin setup provides more control over installation and administration. You can run the admin setup from a server manually or via a log-on script. If you use Windows Active Directory, Group Policy, and IntelliMirror, you can install MindManager on groups of user systems.

Using the admin setup has these advantages:

- MindManager installs and operates properly on supported systems
- It requires no additional software or server resources
- You can customize installations on a per-group or per-user basis
- You can run the installation silently

The installer is not cached on the client machine, reducing the required disk space

And these disadvantages:

Access to the original installer is required for repair and other setup operations

## Deploying MindManager with Active Directory

This method is not yet fully supported. Due to the application architecture, MindManager only supports Computer-based Software installations via Active Directory. User-based deployment is not supported. Using a third party tool such as Orca allows you to edit properties for deployment. See [Deploying MindManager with Active Directory](#).

## Deploying MindManager with Windows Server

Deploying MindManager from a terminal server to a thin client is another supported option. With this architecture it is possible, for example, to "run" a Windows application on a Windows client machine, where one server services many clients. You need to deploy MindManager using Windows Server Terminal Services in order to use full color mode in MindManager.

## Deploying MindManager with Citrix Presentation Server

The Citrix MetaFrame Presentation Server is a sophisticated terminal server environment built on top of the Windows Terminal Services provided by Windows Server. This is currently the only tested and supported Citrix platform for MindManager (although other combinations may work).

## Using System Management Software and a Custom Setup

System management software, such as Microsoft System Management Server, enables you to centrally install and administer client machines. While you can deploy MindManager using such software, there is no specialized support for this in MindManager. Information contained in this document supplies much of the information you need if you choose to deploy MindManager in this way.

Using system management software has these advantages:

- You can deploy the software to many machines with one command
- You can create different setups for different groups of users
- Updating the software is simple

And these disadvantages:

You have to have system management software in place

Mindjet MindManager Large Scale Deployment Guide

Version 10.1.0

January 19, 2012

It takes time to create the custom setup

The installed software uses up disk space on each user's system

## **Deploying MindManager on a Shared Network Drive**

Mindjet does not support installing MindManager on a shared network drive and having users run it directly from there.

# Using the Admin Setup

The MindManager Admin setup gives systems administrators more control over an installation. It is distributed in a .zip archive file that contains the following files:

- Mindjet MindManager Admin.msi
- dotnetfx35setup.exe
- instmsi30.exe
- msxml6\_x86.msi
- vcredist\_2005\_sp1\_x86.exe
- vcredist\_2008\_sp1\_x86.exe
- Mindjet\_MindManager\_Large\_Scale\_Deployment\_Guide.pdf

Mindjet MindManager Admin.msi is the Microsoft installer file for MindManager.

instmsi30.exe file is the engine installer for the Microsoft Windows Installer.

dotnetfx35setup.exe is Microsoft's .NET Framework redistributable setup.

msxml6\_x86.msi is the MSXML 6.0 installer

vcredist\_2005\_sp1\_x86.exe and vcredist\_2008\_sp1\_x86.exe install the latest version of the Microsoft Visual C++ run-time environment for versions 2005 and 2008, respectively.

Mindjet\_MindManager\_Large\_Scale\_Deployment\_Guide.pdf is this Deployment Guide.

Using the admin setup gives you nearly complete control over your MindManager deployment including:

- Deploying (or not deploying) specific components, such as the PDF writer
- Disabling functions, such as internet access
- Storing components on network drives, such as user data or the library

You also have the option of configuring many items from the registry.

**Caution:** Only experienced system administrators should attempt deploying MindManager using the Admin Setup or configuring from the command line and registry.

## Required Software

All required software is included in the Admin setup package. It contains some software which must be installed on your system before using the setup. You should verify that this software is already installed on your system, and if not, install it from the admin package.

dotnetfx35.exe installs the Microsoft Net Framework

Check the installed programs in the Control Panel to check existing installation.

msxml6\_x86.msi installs the MSXML 6.0 SP1 Parser

Check the installed programs in the Control Panel to check existing installation.

vcredist\_2005\_sp1\_x86.exe installs the VC++ Redistributable components for Visual Studio 2005.

Check for existence of registry key:

HKEY\_LOCAL\_MACHINE\SOFTWARE\Microsoft\Windows\CurrentVersion\Uninstall\{7299052b-02a4-4627-81f2-1818da5d550d}

Or simply re-install.

vcredist\_2008\_sp1\_x86.exe installs the VC++ Redistributable components for Visual Studio 2008.

Check for existence of registry key:

HKEY\_LOCAL\_MACHINE\SOFTWARE\Microsoft\Windows\CurrentVersion\Uninstall\{9A25302D-30C0-39D9-BD6F-21E6EC160475}

Or simply re-install.

### Important:

You should check for and install any missing components in the order listed above.

## Required Permissions and Privileges

Administrator privileges are required to install any Windows software including MindManager.

No special privileges or disk permissions are required to run MindManager. A user can run the program as a restricted user, "normal" user, power user, or administrator. The program does assume that it has read/write/create privileges in the HKEY\_CURRENT\_USER registry key as well as the user profile section of the hard disk and below.

If a user does not have write privileges in the HKEY\_LOCAL\_MACHINE registry key, then:

The Extras > Updates command is removed for that user, ensuring that they won't try to perform an upgrade that they are not authorized to do.

## Differences between the Standard and Admin Setups

The MindManager Admin setup is based on the standard setup with a number of important differences:

**Caching:** The admin setup does not cache the setup on the computer where it is being installed. Instead the setup should be run from a network location that remains accessible from the workstation at all times. This ensures proper operation of the Modify, Repair and Remove entries in the “Add/Remove programs” Control Panel applet and avoid duplication of the installation source on every system where MindManager is installed.

**Patching:** Admin setups are only delivered as full setups, not patch setups. The reason for this is that system administrators might modify the admin setup to suit the needs of their individual company. If the installation database is transformed in this way, a future MindManager patch would not be able to properly update the installation. We avoid this problem by not delivering patch updates at all for our admin setups. To upgrade, you need to uninstall the previous version of MindManager and install the upgrade.

**Packaging:** We exclude the Microsoft Windows Installer engine and .NET Framework installer. Both components need to be installed prior to running MindManager.msi if they are missing from a user’s machine.

**User Data:** The admin setup includes option to specify the location of user data.

**Library Files:** There is also an option to have MindManager extract the library files as usual or to have the administrator set this up "manually" ahead of time. This is described in [Installing User Data and Library Files to a Server](#).

## Installing MindManager: An Overview

This section gives a general overview of the admin setup and MindManager components. With this information, you understand the installation process and are able to decide what you may wish to customize for your MindManager deployment.

### Per-machine setup

The MindManager setup installs the program on a client machine and only sets per-machine registry settings in the `HKEY_LOCAL_MACHINE` and `HKEY_CLASSES_ROOT` registry keys. It does not directly create or set any registry keys or values in the `HKEY_CURRENT_USER` registry key.

The MindManager installer installs all program files to this default folder:

**C:\Program Files\Mindjet\MindManager<x>**

Administrator privileges are required to install any Windows software, including MindManager.

## Per-user setup

Each time MindManager launches; it checks the `UserData.ini` file, located in:

```
C:\Documents and Settings\<Username>\Local  
Settings\Application Data\Mindjet\MindManager\<x>
```

to see if a per-user setup needs to be done. If this file is missing or if the version of MindManager installed is newer than the version the user last ran, then MindManager prepares for a "new" per-user installation by deleting the following registry key:

```
HKEY_CURRENT_USER\Software\Mindjet\MindManager\<x>\User  
Interface
```

MindManager also determines if the per-user application data files (outline print templates and spell check auto-correct dictionaries) are present. If not, it copies them from the "All Users" folder:

```
C:\Documents and Settings\All Users\Application  
Data\Mindjet\MindManager\<x>
```

Finally, MindManager determines if the per-user Library files need to be installed using the same `UserData.ini` algorithm described above *and* checking that the `LSDUserDataExtract` registry setting is not set to 0. If so, then a separate background task/program is run to unzip the library files from a MindManager sub-folder:

```
C:\Program Files\Mindjet\MindManager<x>\sys\<language  
version>
```

The Vista system folder structure uses environmental variables instead of real paths. Note the different path structure below:

```
%USERPROFILE%\Local Setting\Application Data\Mindjet\MindManager\<x>
```

```
%ALLUSERPROFILE%\Application Data\Mindjet\MindManager\<x>
```

```
%ProgramFiles%\Mindjet\MindManager <x>\sys\<language version>
```

# What Gets Installed

The MindManager Admin setup installs:

- Required program files
- Configurable MindManager Components
- Shortcuts and Start Menu items
- Third-party add-ins or components
- Shared system software
- Registry keys

The default location for required program files is:

**C:\Program Files\Mindjet\MindManager <x>**

This folder contains **MindManager.exe**, MindManager DLLs, and third-party components. No user files are stored in this folder.

MindManager uses merge modules to install required system software, such as ATL80.dll. If MindManager uses a later version of a component than one already installed on the machine, the required version gets installed. For more information, see [Shared System Software](#).

The first time a user runs MindManager, user data is placed in this default location:

**C:\Documents and Settings\UserName\Local  
Settings\Application Data\Mindjet\MindManager\<x>**

where *UserName* is the current user name. You must enable viewing hidden files to see this directory.

The first time a user starts MindManager, the application also searches to see if a Microsoft Office custom dictionary exists for that user (e.g. "C:\Documents and Settings\UserName\Application Data\Microsoft\Proof\CUSTOM.DIC"). If the user-specific Microsoft Office custom dictionary is found, a reference to that dictionary is added to the list of spelling dictionaries.

MindManager stores maps at this default location:

**C:\Documents and Settings\UserName\My Documents\My Maps**

## MindManager Components

MindManager installs a variety of configurable components, including:

- Library
- Dictionary
- Tutorials
- PDF-XChange

User configuration files are also installed to help govern their behavior.

### Library

The Library component consists of two sub-components: Images and the Template Organizer. These are optional but highly recommended components. Images are a library of pictures used to help make maps more memorable. The Template Organizer contains a variety of map and web templates.

The library does not get uninstalled if you uninstall MindManager; this content is preserved for users upgrading to newer versions of MindManager.

The default location for the Library is:

```
C:\Documents and Settings\\Local
Settings\Application
Data\Mindjet\MindManager\\Library\<language version>
```

You may wish to install the library to a different location. See the documentation for deploying with the [Installation Wizard](#) or from the [command line](#) for instructions.

### Dictionaries

The Dictionaries component contains spell check dictionaries available for MindManager, including dictionaries for over 10 languages. When using the installer, you can choose which dictionaries to install. You can also control dictionary installation from the command line.

Dictionaries do not get uninstalled if you uninstall MindManager; this content is preserved for users upgrading to newer versions of MindManager.

The default location for Dictionaries is:

```
C:\Documents and Settings\\Local
Settings\Application Data\Mindjet\MindManager\\Spell
```

### Tutorials

By default, all tutorials get installed with MindManager. The default location for local tutorials is:

Mindjet MindManager Large Scale Deployment Guide  
Version 10.1.0  
January 19, 2012

**C:\Program Files\Mindjet\MindManager<x>\<language version>**

You can customize your tutorial installation by choosing:

To deploy them to a server, rather than installing them on local machines

To not deploy tutorials at all

To customize tutorial installation, see [Deploying User Data, the Library, and Tutorials from the Command Line](#).

## PDF-XChange

PDF-XChange is an optional component that allows you to export maps to PDF. Users without a full-license for PDF-XChange see a prominent watermark when printing to PDF from other document formats. The watermark prompts the user to purchase a full version of PDF-XChange. Printing from the Outline view within MindManager also produces this watermark.

PDF-XChange components get installed in two places:

Its installer, PDFX3SA\_sm.exe, gets installed at

**%ProgramFiles%\Mindjet\MindManager<x>**

Other components get installed at **%ProgramFiles%\Mindjet\MindManager<x>\PDF-XChange 3**

The installer PDFX3SA\_sm.exe gets uninstalled with MindManager. Its other components do not.

## User Configuration Files

MindManager creates and stores user configuration files for different purposes.

**Table 2: Configuration Files**

<b>File Name</b>	<b>Location and Function</b>
<b>ImagePropertyDatabase.dat</b>	<b>C:\Documents and Settings\&lt;username&gt;\Local Settings\Application Data\Mindjet\MindManager\&lt;x&gt;</b>  This file is created dynamically by MindManager (not the installer). It collects information about keywords assigned by the user to images.
<b>UserData.ini</b>	<b>C:\Documents and Settings\&lt;username&gt;\Local Settings\Application Data\Mindjet\MindManager\&lt;x&gt;</b>  This file detects the first time MindManager is launched by a user and initiates procedures such as registry cleanup.

File Name	Location and Function
Library.ini	<p><b>C:\Documents and Settings\&lt;username&gt;\Local Settings\Application Data\Mindjet\MindManager\&lt;x&gt;\Library\&lt;language version&gt;</b></p> <p>This file detects the library installation time. Because MindManager installs the library the first time it gets launched, this file prevents multiple library installations.</p>

## Shortcuts and Start Menu items

The MindManager installer puts a shortcut to the program on the Windows Desktop, Windows Send To menu and in the main Start menu. It creates a **Mindjet MindManager<x>** folder in the **Start > Programs** folder with a shortcut to MindManager in it.

The MindManager shortcut is an "advertised shortcut" to the MindManager program that automatically checks to see if the program needs to be repaired before it is run. If a repair is needed, it is done then. If you do not want to use this self-repairing feature, you can create a shortcut directly to the MindManager.exe file instead. Deleting this copy of the installer disables the self-repair service as well.

## Shared System Software

Some shared software must be [installed on your system](#) before using the admin setup. During installation MindManager uses merge modules to install other missing software, such as PIPanel.msm. Missing components are installed from the modules. Depending on the host machine's configuration, the merge module installs the components required for that machine.

These shared components do not get uninstalled automatically with MindManager. Their default locations are indicated below.

**Table 3: Location of Shared System Components**

Component	Folders and Files
Ink related files	<p>%CommonProgramFiles%\Microsoft Shared\Ink</p> <ul style="list-style-type: none"> <li>• InkObj.dll</li> <li>• tpcps.dll</li> <li>• PIPanel.exe*</li> <li>• PIPanel.dll*</li> <li>• GdiPlus.dll</li> </ul> <p>%WINDIR%\system32</p>

Component	Folders and Files
	<ul style="list-style-type: none"> <li>• InkEd.dll</li> <li>• PipRes.dll*</li> <li>• wisptis.exe</li> </ul> <p>* These components are installed only on Tablet PCs.</p>
C++ runtime libraries	<p>%WINDIR%\system32</p> <ul style="list-style-type: none"> <li>• msvcp60.dll</li> <li>• msvcp80.dll</li> <li>• For a complete list of these merge modules' components, see Microsoft's documentation</li> </ul>

Environment variable names (e.g. "%CommonProgramFiles%") is expanded to their actual values (e.g. "C:\Programs Files\Common Files") by the installer.

## Third-Party Software

MindManager uses specific third-party software. Unless otherwise stated, the installer checks to learn if the component is present on the system. If not, or if the application uses a newer version, the software gets installed or updated. The setup process places third-party software at C:\Program Files\Mindjet\MindManager<x>\, and removes during the application uninstall process.

Except for [PDF-XChange](#), all third-party software is required.

Table 4: Third-Party Software Overview

Third-Party Software	Description and Vendor
adfctry.dll	<ul style="list-style-type: none"> <li>• Active Delivery Factory is a self-extracting zip executable</li> <li>• Inner Media, Inc.</li> </ul>
atl70.dll	<ul style="list-style-type: none"> <li>• Active Template Library, template-based C++ classes, creates COM objects</li> <li>• Microsoft</li> </ul>
bcgcbpro1500u.dll bcgpstyle2007silver110.dll bcgpstyle2010black150.dll bcgpstyle2010blue150.dll bcgpstyle2010white150.dll	<ul style="list-style-type: none"> <li>• BCG Control Bar Professional DLL for MindManager</li> <li>• BCGSoft Ltd. Portions</li> </ul>
Blowfish algorithm	<ul style="list-style-type: none"> <li>• 128-bit encryption for password protection</li> <li>• Schneier Publishing</li> </ul>

Third-Party Software	Description and Vendor
ChartFX.ClientServer.core.dll	<ul style="list-style-type: none"> <li>Chart FX Client Server ActiveX Control is used with spread-sheets to create bar charts</li> <li>Software FX, Inc.</li> </ul>
dunzip32.dll	<ul style="list-style-type: none"> <li>DynaZIP-32 Multi-Threading UnZIP DLL</li> <li>Inner Media, Inc.</li> </ul>
dzip32.dll	<ul style="list-style-type: none"> <li>DynaZIP-32 Multi-Threading ZIP DLL</li> <li>Inner Media, Inc.</li> </ul>
axinterop.officeviewermme.dll interop.officeviewermme.dll officeviewermme.ocx	<ul style="list-style-type: none"> <li>Base Office Viewer used by embedded Browser</li> <li>EDrawSoft</li> </ul>
extensibility.dll	<ul style="list-style-type: none"> <li>Allows addition of add-ins</li> <li>Microsoft</li> </ul>
gdiplus.dll	<ul style="list-style-type: none"> <li>GDI+ is a C/C++ API that supports integrating graphics and images on both the video display and printer</li> <li>Microsoft</li> </ul>
HTS32MM.dll	<ul style="list-style-type: none"> <li>An HTML control that supports inserting pictures, hyperlinks, tables, and other objects into RTF text</li> <li>Sub Systems, Inc.</li> </ul>
Independentsoft.Webdav.dll	<ul style="list-style-type: none"> <li>WebDAV protocol client API for .NET Framework</li> <li>Independentsoft</li> </ul>
Java Runtime Environment	<ul style="list-style-type: none"> <li>Java runtime environment and components to support the desktop Viewer feature</li> </ul>
libtidyU.dll	<ul style="list-style-type: none"> <li>HTML Tidy fixes a variety of HTML issues</li> <li>WWW Consortium</li> </ul>
interop.msscriptcontrol.dll msscript.ocx	<ul style="list-style-type: none"> <li>Parses the XML returned by the Web Services</li> <li>Microsoft</li> </ul>
matrix.dll	<ul style="list-style-type: none"> <li>Map co-editing engine</li> <li>AG Software</li> </ul>
Microsoft.Web.Services3.dll	<ul style="list-style-type: none"> <li>Microsoft Web Services Enhancements 3.0 for Microsoft .NET Framework</li> <li>Microsoft</li> </ul>

Third-Party Software	Description and Vendor
Mfc80.dll	<ul style="list-style-type: none"> <li>• Microsoft Foundation Classes, wrap Windows APIs in C++ libraries, forming application framework</li> <li>• Other components are associated with this .dll. See Microsoft's documentation for complete information.</li> <li>• Microsoft</li> </ul>
msvci70.dll	<ul style="list-style-type: none"> <li>• Microsoft C++ Runtime Library</li> <li>• Microsoft</li> </ul>
msvcp70.dll	<ul style="list-style-type: none"> <li>• Microsoft C++ Runtime Library</li> <li>• Microsoft</li> </ul>
mscr70.dll	<ul style="list-style-type: none"> <li>• Microsoft C++ Runtime Library</li> <li>• Microsoft</li> </ul>
PDFX3SA_sm.exe	<ul style="list-style-type: none"> <li>• This exe installs PDF-Exchange to <code>c:\Program Files \PDF-XChange</code></li> <li>• PDF-XChange export maps to PDF. For other document formats, it places a prominent watermark on the document, asking the user to purchase the product.</li> <li>• This installer gets uninstalled with MindManager, but the application itself does not.</li> <li>• Tracker Software Ltd.</li> </ul>
redemption.dll	<ul style="list-style-type: none"> <li>• Supports Microsoft Outlook Integration</li> </ul>
Sax Basic Engine	<ul style="list-style-type: none"> <li>• Components that enable VB-like scripting within MindManager</li> </ul>
SB6ENT.OCX	<ul style="list-style-type: none"> <li>• WinWrapBasic supports Visual Basic scripting within MindManager</li> <li>• Polar Engineering</li> </ul>
SBE6_000.cnt, SBE6_000.hlp, SBE6_000.chm	<ul style="list-style-type: none"> <li>• WinWrapBasic Help files</li> <li>• Polar Engineering</li> </ul>
SBE6_32.dll	<ul style="list-style-type: none"> <li>• WinWrapBasic supports Visual Basic scripting within MindManager</li> <li>• Polar Engineering</li> </ul>
Sfxbe322.dll	<ul style="list-style-type: none"> <li>• A 32-bit active delivery self-extracting back end zip executable.</li> <li>• Inner Media, Inc.</li> </ul>

Third-Party Software	Description and Vendor
Sfxfe32.exe	<ul style="list-style-type: none"> <li>• A 32-bit active delivery self-extracting front end zip executable.</li> <li>• Inner Media, Inc.</li> </ul>
Spr32du70.dll	<ul style="list-style-type: none"> <li>• FarPoint Spreadsheet Control</li> <li>• FarPoint Technologies, Inc.</li> </ul>
Ssce5532.dll	<ul style="list-style-type: none"> <li>• Spell checker engine</li> <li>• Wintertree Software, Inc.</li> </ul>
TER32MM.DLL	<ul style="list-style-type: none"> <li>• RTF edit control</li> <li>• Sub Systems, Inc.</li> </ul>
Vic32.dll	<ul style="list-style-type: none"> <li>• Image processor</li> <li>• Catenary Systems, Inc.</li> </ul>
vsflex8n.ocx	<ul style="list-style-type: none"> <li>• VSFlexGrid8 (Unicode) helps display, edit, and format tabular data in spreadsheets. Helps integrate with Microsoft Excel.</li> <li>• ComponentOne</li> </ul>
zlib.dll zlib64.dll	<ul style="list-style-type: none"> <li>• Lossless data compression library</li> <li>• Jean-Loup Gailly and Mark Adler</li> </ul>

## Java Runtime Environment

The MindManager installer writes a complete Java Runtime Environment (JRE) to support the local (non-internet) desktop-based MindManager Viewer feature.

The JRE files are installed to the following directory: C:\Program Files\Mindjet\MindManager x\jre

The JRE package is copied to and expanded to the directory listed above. At no time are these components installed system-wide, or have any impact on past, current or future JRE installs. The components delivered with MindManager are isolated to that application. In addition, they are not upgradable outside of a new MindManager update or upgrade. **The MindManager installer ships JRE version 1.6.20.**

JRE components installed in INSTALLDIR include:

INSTALLDIR\playerTransformation\\* (small Java application)

INSTALLDIR\jre\\* (Java Runtime Environment)

JRE installation is optional. However, doing so renders the MindManager Viewer feature inoperable.

By default, the JRE and MindManager Viewer feature are installed.

To *not* install the JRE, simply remove the installer’s “MMPlayerExport” Feature at install time. To re-enable MindManager Viewer functionality and install the JRE, add the “MMPlayerExport” Feature back in. See “Sample Customized Installation Using ADDLOCAL and REMOVE” for more detailed instructions.

## ThirdPartyReadMe

See the link below for additional legal information regarding Mindjet’s use of third-party software: <http://www.mindjet.com/legal/thirdpartyreadme>

## Registry Keys

The installer places any per-machine MindManager 8 registry settings in or below the key:

**HKEY\_LOCAL\_MACHINE\SOFTWARE\Mindjet\MindManager\<x>**

These are the settings used by MindManager and its add-ins on a per-machine basis. No per-user values are stored in this key.

Following Windows guidelines, MindManager registers its associated file types, COM objects etc. in sub-keys of HKEY\_CLASSES\_ROOT.

**Table 5: MindManager Registry Key Overview**

Key Type	Location/Key
HKEY_LOCAL_MACHINE	HKEY_LOCAL_MACHINE\SOFTWARE\Mindjet\MindManager\<x>
HKEY_CLASSES_ROOT	<p>HKEY_CLASSES_ROOT\...(all keys below this level)</p> <ul style="list-style-type: none"> <li>• .mmap*</li> <li>• .mmas</li> <li>• .mmat</li> <li>• .mbas</li> <li>• .mmmp</li> <li>• .mms</li> <li>• .mmp*</li> <li>• Mindjet.MindManager.Custom.Document</li> <li>• Mindjet.MindManager.Document.x</li> <li>• Mindjet.MindManager.Document.Template.x</li> <li>• Mindjet.MindManager.Macro.x</li> <li>• Mindjet.MindManager.MapMarker.x</li> </ul>

Key Type	Location/Key
	<ul style="list-style-type: none"> <li>• Mindjet.MindManager.MapMarkerSet.x</li> <li>• MMindjet.MindManager.MapPart.x</li> <li>• Mindjet.MindManager.Style.x</li> <li>• Mindjet.Mm5GenericSmartMapPart.AddIn</li> <li>• Mindjet.Mm5GenericSmartMapPart.AddIn.x</li> <li>• Mindjet.Mm5Sort.AddIn</li> <li>• Mindjet.Mm5Sort.AddIn.x</li> <li>• Mindjet.Mm5WebExportAddIn</li> <li>• Mindjet.Mm5WebExportAddIn.x</li> <li>• Mindjet.Mm10ExcelLinker.AddIn.x</li> <li>• Mindjet.Mm10ExcelLinker.AddIn</li> <li>• Mindjet.Mm10MsProject.AddIn</li> <li>• Mindjet.Mm10MsProject.AddIn.x</li> <li>• Mindjet.Mm10Outlook.AddIn</li> <li>• Mindjet.Mm10Outlook.AddIn.x</li> <li>• Mindjet.Mm10OutlookLinker.AddIn</li> <li>• Mindjet.Mm10Outlooklinker.AddIn.x</li> <li>• Mindjet.Mm10PPEExport.AddIn</li> <li>• Mindjet.Mm10PPEExport.AddIn.x</li> <li>• Mindjet.Mm10Project.AddIn</li> <li>• Mindjet.Mm10Project.AddIn.x</li> <li>• Mindjet.Mm10Word.AddIn</li> <li>• Mindjet.Mm10Word.AddIn.x</li> <li>• MindManager.Application</li> <li>• MindManager.Application.x</li> <li>• MindManager.Color</li> <li>• MindManager.Color.x</li> <li>• MindManager.TextFont</li> <li>• MindManager.TextFont.x</li> <li>• Mm5WebExport.Page</li> <li>• Mm5WebExport.Page.x</li> <li>• Mm5WebExport.Pages</li> <li>• Mm5WebExport.Pages.x</li> <li>• Mm5WebExport.VariantSets</li> <li>• Mm5WebExport.VariantSets.x</li> <li>• Mm5WebExport.WebExport</li> <li>• Mm5WebExport.WebExport.x</li> <li>• Mm5WebExport.WebExports</li> <li>• Mm5WebExport.WebExports.x</li> <li>• MM8InternetExplorer.BHO</li> <li>• MM8InternetExplorer.BHO.x</li> </ul>
Uninstall Key	HKEY_LOCAL_MACHINE\SOFTWARE\Microsoft\Windows\CurrentVersion\Uninstall
HKEY_CURRENT_USER	HKEY_CURRENT_USER\Software\Mindjet\MindManager\<x>

Uninstall information for the program is stored in a sub-key of:

**HKEY\_LOCAL\_MACHINE\SOFTWARE\Microsoft\Windows\CurrentVersion\Uninstall**

The name of the sub-key is the Globally Unique Identifier (GUID) for the program (which changes with each release). You can find it by using RegEdit to search for "MindManager" in the Uninstall key. The uninstallation key does not remain after uninstalling MindManager.

When a user runs MindManager, any per-user registry settings are stored in or below the key:

**HKEY\_CURRENT\_USER\Software\Mindjet\MindManager\<x>**

Some Current User keys remain after uninstalling MindManager. These keys help preserve user data for upgrading to the next version of MindManager.

# What Remains After Uninstallation

When you uninstall MindManager, almost all traces of the application are removed, including all components located at `C:\Program Files\Mindjet\MindManager<x>` (except for PDF-XChange program files). Most registry keys get removed as well. Map files (.mmp and .mmap files) do not get deleted.

On Microsoft Vista or any other system where the system administrator has disallowed the use of RegEdit to export the registry key (i.e. DisableRegistryTools is set), the registry key is backed up to a MindManager registry subkey under:

`HKCU\Software\Mindjet\MindManager\MMX<x>RegistryBackup_<date>_<time>`.

Most remnants are left behind to preserve user data when upgrading to a new version of MindManager. See [Remaining Files, Folders, and Software Components](#) and [Remaining Registry keys](#) for more information.

## Remaining Files, Folders, and Software Components

When you uninstall MindManager, the installer leaves behind some components it installed with the program. The tables below reflect the most common remaining components and registry keys. The actual list may vary depending upon the installation and deployment. In general, what gets left behind fits one of these scenarios:

- User data (the library, images, and templates) remains to support upgrading to the next version of MindManager
- Shared components, such as C++ libraries, and their registry keys get left behind because they may be required for other purposes
- A backup of your registry

**Table 6: Remaining Files, Folders, and Software components**

Component	Location and Explanation
C++ runtime libraries	See <a href="#">Shared System Components</a> for locations. These files may be in use by other applications.

Component	Location and Explanation
Ink related files	See <a href="#">Shared System Components</a> for locations. These files may be in use by other applications.
MMX<x>RegistryBackup_<date>_<time>	C:\MyDocuments\ Opening this file gives you the option to add its contents to your current registry.
msvcp60.dll	%WINDIR%\system32 This software may be in use by other applications.
msvcrt.dll	%WINDIR%\system32 This software may be in use by other applications.
XML-related files	See <a href="#">Shared System Components</a> for locations. These files may be in use by other applications.
PDF-XChange	c:\ProgramFiles\Mindjet\MindManager\PDF-XChange This software may be in use by other applications.
User Data	C:\Documents and Settings\<local user>\Local Settings\Application Data\Mindjet\MindManager\<x> Contains dictionaries, images, templates dictionaries etc. which the user may have customized. Does not uninstall so the user does not lose this data when upgrading.

## Remaining Registry Keys

Some registry keys remain after uninstallation. A backup copy of your registry gets placed at:

C:\My Documents\MMX<x>RegistryBackup\_<date>\_<time>

Table 7: Remaining Registry Keys

Registry Key	Location and Explanation
HKEY_CLASSES_ROOT	HKEY_CLASSES_ROOT\ <ul style="list-style-type: none"> <li>.mmap</li> <li>.mmp</li> </ul> These keys register .mmap file extensions.
HKEY_CURRENT_USER	HKEY_CURRENT_USER\Software\Mindjet\MindManager\<x>\br/> Keys at or below this preserve user data for upgrading.

Registry Key	Location and Explanation
HKEY_LOCAL_MACHINE	<p>HKEY_LOCAL_MACHINE\SOFTWARE\Mindjet\MindManager\&lt;x&gt;\Installer\</p> <p>This key and those below it are left behind for the installer.</p>

# Deploying with the Installation Wizard

Using the admin setup to install MindManager is straightforward and simple. Unlike the basic setup, you have customization options, though not as many as from the command line.

## Starting the Installation

To install MindManager:

1. Launch the installer.
2. At the welcome screen, click Next.
3. Select I agree to the terms of the license agreement and click Next.
4. Enter the Customer Information (User Name and Organization).
5. Click Next.

The Setup Type dialog appears.



At this point you can customize your deployment or [complete the installation](#).

## Customizing the Installation


A custom installation allows you to:

- Disable default features
- Change the default installation directory
- Deploy user data and the library on a separate server

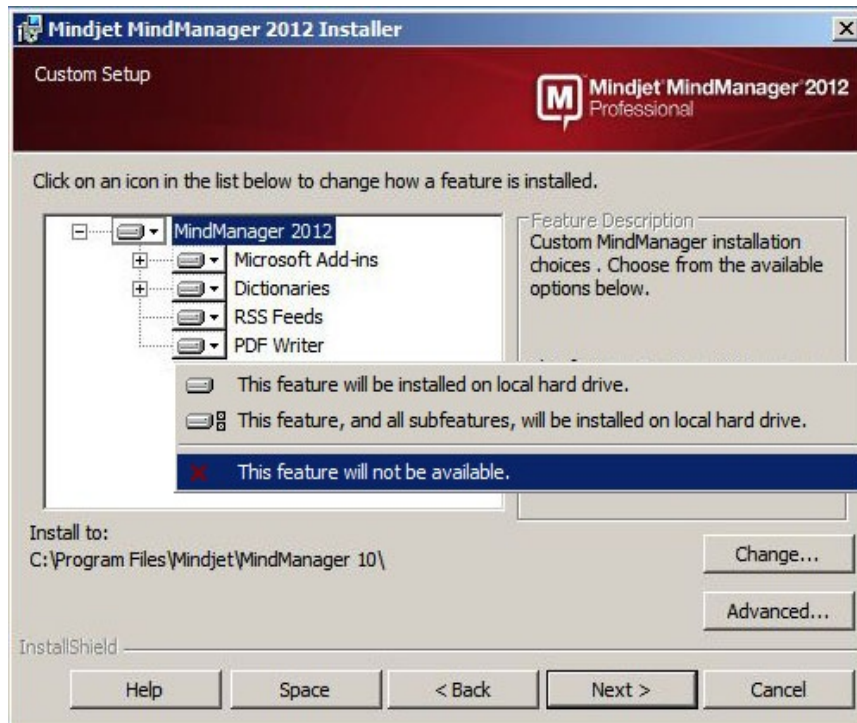
If you need to customize the installation beyond these parameters, [install MindManager from the command line](#).

## Disabling Default Features

To disable the default installation features:

6. Complete steps 1-5 in [Starting the Installation](#).
7. Select Custom and click Next.  
The Custom Setup dialog appears.
8. In the tree, select a feature whose default installation you want to change.
9. Click the down arrow button .

10. Select the desired feature setting.



For each selected feature, a description and storage requirement appears.

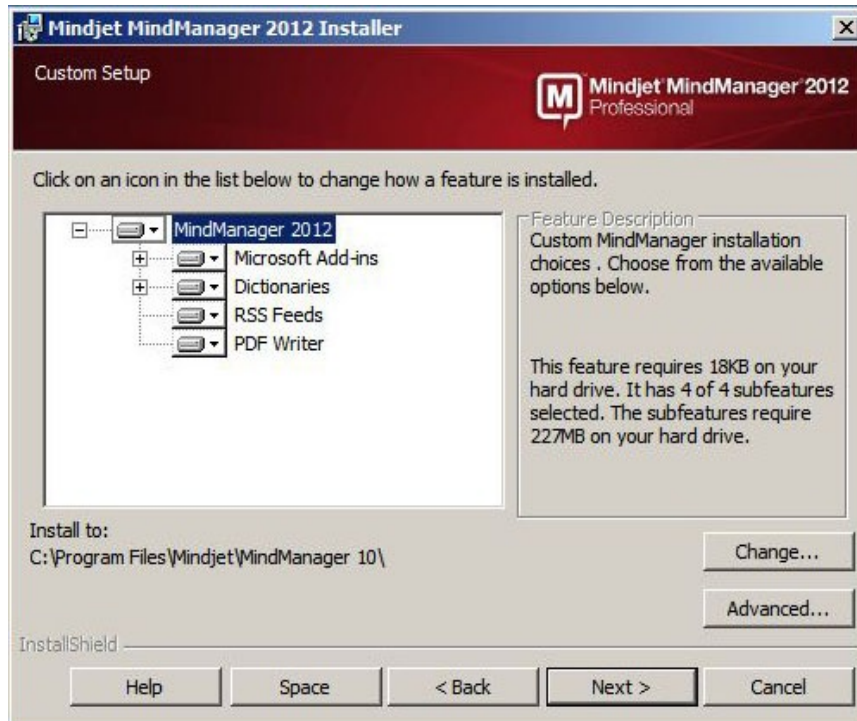
11. Repeat this process until you have made all of your feature customization choices.
12. Complete the installation as outlined in [Completing the Installation](#).

## Changing the Default Installation Folder

To change the default installation folder:

13. Complete steps 1-5 in [Starting the Installation](#).
14. Select Custom and click Next.

The Custom Setup dialog appears.



15. Click Change.

The Change Current Destination Folder dialog appears.

16. Select the destination folder.

17. Click OK.

The new destination folder appears in the Custom Setup dialog.

18. Complete the installation as outlined in [Completing the Installation](#).

## Deploying User Data and the Library to a Server

MindManager installs a "Library" folder containing:

- Background Images
- Icons
- Images
- Map Parts
- Shapes
- Styles
- Templates
- Web Export Templates

The entire library consists of several megabytes. By default, these files are stored on a per-user basis in this folder:

Mindjet MindManager Large Scale Deployment Guide  
Version 10.1.0  
January 19, 2012

```
C:\Documents and Settings\UserName\Local
Settings\Application
Data\Mindjet\MindManager\<x>\Library\<language version>
```

where *UserName* is the current user's logon name.

You can store user data and the library in a network folder for various reasons in order to:

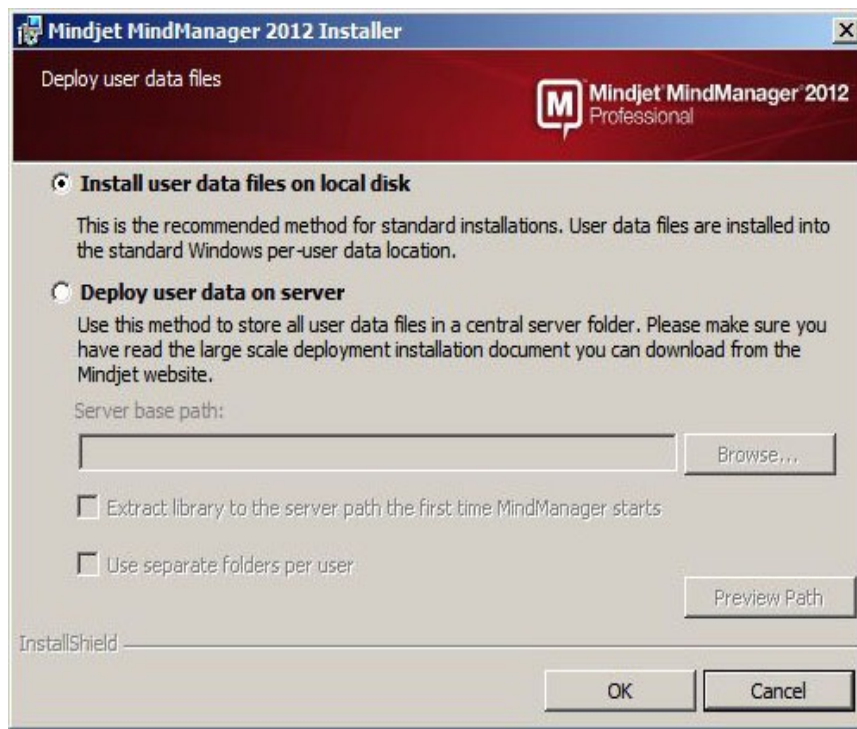
- Save space on users' systems
- Decrease the time required to run the program the first time
- Allow roaming user's access to their customized libraries
- Assure that all users have a fixed, easily updatable set of library files

You can install these files once to a common location (perhaps in a read-only folder). Multiple users can then share the files, or a single user can access them from multiple machines. If a user needs to edit these files, install them in a directory with write privileges.

Note: You cannot install user data and the library to separate locations from the installation wizard. To install them separately, you must [install them from the command line](#).

To deploy user data and the library to a server:

19. Complete steps 1-5 in [Starting the Installation](#).
20. From the Custom Setup dialog, click Advanced.  
  
The Deploy User Data Files dialog appears.
21. Select Deploy user data on server.



22. Click Browse.

The Browse for Folder dialog appears.

23. Select the destination folder.

24. Click OK.

The new directory appears in the Server base path field.

25. Choose from the following options:

- Extract library to the server path the first time MindManager starts
- Use Separate folders per user

We recommend selecting both of these options to avoid having to configure the user data folder and the library folder separately. You may want to create the user folders before installation, giving you the chance to make the files read only.

26. Click OK to close the dialog.

27. Complete the installation as outlined in [Completing the Installation](#).

These are all of the customization choices you have from the installer interface. You have more control if you [install MindManager from the command line](#).

## Completing the Installation

To complete the standard installation:

28. Select Complete and click Next.

The Ready to Install dialog appears.

29. Choose your shortcut options.

30. Click Install.

31. After the installation is complete, choose from the following options:

- Launch Mindjet MindManager
- Register Mindjet MindManager

32. Click Finish.

# Deploying from the Command Line

While you may wish to [customize your MindManager deployment from the installer interface](#), you have much greater control over the installation from the command line, including:

- [Configuring installation parameters](#)
- [Specifying what to install on a feature by feature basis](#)
- [Enabling or disabling program functions](#)
- [Specifying where to install libraries, and user data](#)
- [Using a custom SharePoint SiteConnections.xml file](#)

This section identifies what you may configure and provides examples of command line arguments for customizing your deployment. A sample installation command demonstrating most of these options is included in [Sample Setup Commands](#).

Here is a link for general command line options for the Microsoft installer:

[http://msdn.microsoft.com/library/default.asp?url=/library/en-us/msi/setup/command\\_line\\_options.asp](http://msdn.microsoft.com/library/default.asp?url=/library/en-us/msi/setup/command_line_options.asp)

## Configuring Installation Parameters from the Command Line

You can set a number of public properties with command line options.

Table 8: Configuring Installation Parameters from the Command Line

Parameter	Description of Values
INSTALLDIR	Specifies where the program should be installed. For example: "C:\Program Files\Mindjet\MindManager<x>\"

Parameter	Description of Values
ISX_SERIALNUM	Specifies the license key for your MindManager installation. Note: No validation is performed for this key, it is simply written to the registry. If the license key is not valid, MindManager runs in a restricted (trial) mode.
USERNAME	Specifies the User Name for registering MindManager. Optional parameter; the Windows User Name will be used if this parameter is not supplied.
COMPANYNAME	Specifies the Company Name for registering MindManager. Optional parameter; the Windows Company Name will be used if this parameter is not supplied.

## Configuring Features from the Command Line

The admin setup is a Basic MSI project, not an InstallScript project; there is no record mode to run an install with `setup.iss`. Basic MSI projects do not create or use a response file for silent installations. The article at this URL describes the use of response files for silent installations:

[http://helpnet.installshield.com/robo/projects/helplibdevstudio9/IHelpSetup\\_EXE\\_CmdLine.htm#bParam](http://helpnet.installshield.com/robo/projects/helplibdevstudio9/IHelpSetup_EXE_CmdLine.htm#bParam)

### Tip

When configuring features from the command line, it is better to use `/s` silent installation in order to avoid conflicts with properties set through the installer interface.

You can remove or add features from the command line by using `ADDLOCAL` or `REMOVE` on a feature by feature basis. To simplify the process, use `ADDLOCAL="ALL"` and then remove features you do not want. Examples are provided below.

## Customizing the Installation with Setup.exe

You can use the following options to add or remove features from the command line `setup.exe`:

`/v`=command line access to msi file

`/qn`=when used with `/v` parameter, silent (no user interface) parameter passed to msi file

See this documentation for a complete list of command line options for `setup.exe`:

[http://helpnet.installshield.com/Robo/BIN/Robo.dll?mgr=agm&tpc=%2Frobo%2Fprojects%2Finstallshield11helplib%2FIHelpSetup\\_EXECmdLine.htm&](http://helpnet.installshield.com/Robo/BIN/Robo.dll?mgr=agm&tpc=%2Frobo%2Fprojects%2Finstallshield11helplib%2FIHelpSetup_EXECmdLine.htm&)

Mindjet MindManager Large Scale Deployment Guide

Version 10.1.0

January 19, 2012

### Tip

Here are examples of adding and removing features through the setup.exe file, using silent install:

Adding: `<directory>\setup.exe /v"ADDLOCAL=\"MSWordAddin\" /qn"`

Removing: `<directory>\setup.exe /v"ADDLOCAL=\"ALL\"  
"REMOVE=\"MSWordAddin\" /qn"`

You can also string together multiple features for inclusion or removal:

```
<directory>\setup.exe  
/v"ADDLOCAL=\"All\" REMOVE=\"MSWordAddin,PDFWriter,RSS\"  
/qn"
```

## Customizing the Installation with MSI

You can use these options to add or remove features from the command line with MSI.exe:

`/i=install mode`

`/qn=silent (no user interface) parameter`

### Important:

On a VISTA system, security features require that you run silent install (`/qn`) as the Administrator, *not* as a member of the Administrator group.

See this documentation for a complete list of command line options for msixec.exe:

<http://helpnet.installshield.com/Robo/BIN/Robo.dll?mgr=agm&tpc=%2Frobo%2Fprojects%2Finstallshield11help%2FIHelpCmdLineMSI.htm&wnd=In>

### Tip

Here are examples of adding and removing features through the msixec.exe file, using silent install:

Adding: `msiexec /i "<directory>\filename.msi"  
ADDLOCAL="MSWordAddin" /qn`

Removing: `msiexec /i "<directory>\filename.msi" ADDLOCAL="ALL"  
REMOVE="MSWordAddin" /qn`

You can also string together multiple features for inclusion or removal:

```
msiexec /i "<directory>\filename.msi" ADDLOCAL="ALL"  
REMOVE="MSWordAddin,PDFWriter,RSS" /qn
```

**Table 9: Configuring Features with MSI from the Command Line**

Feature	Comments
Library	<p>Available add-ins</p> <p>The default add-in is Library, which installs add-ins below. You can also specify a subset.</p> <ul style="list-style-type: none"> <li>• Images</li> <li>• Shapes</li> <li>• BackgroundImages</li> <li>• Icons</li> <li>• ImageGallery</li> <li>• Icons</li> <li>• TemplateOrganizer</li> <li>• Templates</li> <li>• WebTemplates</li> <li>• Styles</li> <li>• MapParts</li> <li>• Markers</li> </ul> <p>Example:</p> <pre>msiexec /i "&lt;directory&gt;\filename.msi" ADDLOCAL="ALL" REMOVE="WebTemplates" /qn</pre>
Dictionaries	<p>Available add-ins</p> <p>The default add-in is Dictionaries, which installs add-ins below. You can also specify a subset.</p> <ul style="list-style-type: none"> <li>• Swedish</li> <li>• Spanish</li> <li>• NorwegianB</li> <li>• BrazilianPortugese</li> <li>• Italian</li> <li>• Danish</li> <li>• Finnish</li> <li>• CanadianEnglish</li> <li>• USEnglish</li> <li>• UKEnglish</li> <li>• French</li> <li>• Dutch</li> <li>• German</li> </ul> <p>Example:</p> <pre>msiexec /i "&lt;directory&gt;\filename.msi" ADDLOCAL="ALL" REMOVE="CanadianEnglish" /qn</pre>

Feature	Comments
Microsoft Add-Ins	<p>Available add-ins</p> <p>The MSAddins feature is a container for the following Microsoft-related add-ins. Any or all of these sub-features can be all installed by specifying them on the command line. Examples below will clarify this.</p> <p>MSWordAddin</p> <p>MSOutlookLinkerAddin</p> <p>MSOutlookMapMinderLinkerAddin</p> <p>MSPowerPointAddin</p> <p>MSProjectAddin</p> <p>MSExcelLinkerAddin</p> <p>MSIEAddin</p> <p>Note:  <b>This MSAddins feature, and all sub-features, can be removed with REMOVE="MSAddins", but they cannot be added with ADDLOCAL="MSAddins".</b></p> <p>Example:  There are three options for including a feature that's not installed:</p> <p>(1) Include the selected feature  (2) Include the selected feature and all sub-features  (3) Include the selected feature and then select sub-features individually</p> <p>- Using ADDLOCAL="MSAddins" is equivalent to (1) above. However, this results in no add-ins being added since MSAddins is just a container for other add-ins, and they need to be specified.</p> <p>- ADDLOCAL="MSAddins, MSExcelLinkerAddin, MSIEAddin, MSOutlookLinkerAddin, MSPowerPointAddin, MSProjectAddin, MSWordAddin" is equivalent to (2) above.</p> <p>- Using a subset of MSIEAddin, MSOutlookLinkerAddin, MSPowerPointAddin, MSProjectAddin, MSWordAddin is equivalent to (3)</p>

Feature	Comments
	above.
PDF Writer	<p>The add-in is PDFWriter</p> <p>Example:</p> <pre>msiexec /i "&lt;directory&gt;\filename.msi" ADDLOCAL="ALL" REMOVE="PDFWriter" /qn</pre>
RSS	<p>The add-in is RSS</p> <p>Example:</p> <pre>msiexec /i "&lt;directory&gt;\filename.msi" ADDLOCAL="ALL" REMOVE="RSS" /qn</pre>

## Configuring Functions from the Command Line

During installation, you can disable some functions by setting the value to "0". For example:

```
msiexec /i "<directory>\Mindjet MindManager <x> Admin.msi"
/qn ONLINEHELP="0"
```

Table 10: Configuring Functions from the Command Line

Functions	Examples
Macro Support	<p>The function name is MACROUI.</p> <p>Example (msi)</p> <pre>msiexec /i "&lt;directory&gt;\Mindjet MindManager &lt;x&gt;Admin.msi" /qn MACROUI="0"</pre>
Shortcuts	<p>The function names are:</p> <ul style="list-style-type: none"> <li>• SHORTCUTDESKTOP</li> <li>• SHORTCUTSTARTMENU</li> <li>• SHORTCUTQUICKLAUNCH</li> </ul> <p>Example:</p> <pre>msiexec /i "&lt;directory&gt;\Mindjet MindManager &lt;x&gt; Admin.msi" /qn SHORTCUTSTARTMENU="0"</pre>
Internet Access	<p>The function name is INTERNETACCESS.</p> <p>Example (msi):</p> <pre>msiexec /i "&lt;directory&gt;\Mindjet MindManager &lt;x&gt; Admin.msi" /qn INTERNETACCESS="0"</pre> <p>Example (setup.exe)</p> <pre>&lt;directory&gt;\setup.exe /s</pre>

Functions	Examples
	<code>/v "INTERNETACCESS=0 /qn"</code>
Online Help	<p>The function name is ONLINEHELP.</p> <p>Example (msi):</p> <pre>msiexec /i "&lt;directory&gt;\Mindjet MindManager &lt;x&gt; Admin.msi" /qn ONLINEHELP="0"</pre> <p>Example (setup.exe):</p> <pre>&lt;directory&gt;\setup.exe /s /v "ONLINEHELP=0 /qn"</pre>
UI Customization	<p>The function name is UICUSTOMIZATION.</p> <p>Example (msi):</p> <pre>msiexec /i "&lt;directory&gt;\Mindjet MindManager &lt;x&gt; Admin.msi" /qn UICUSTOMIZATION="1"</pre> <p>Example (setup.exe):</p> <pre>&lt;directory&gt;\setup.exe /s /v "UICUSTOMIZATION=1 /qn"</pre>
Disable Attachments	<p>The function name is DISABLEATTACHMENTS</p> <p>Example(msi):</p> <pre>msiexec.exe /i "Mindjet MindManager &lt;x&gt; Admin.msi" DISABLEATTACHMENTS=1 /qn</pre>

## Configuring Functions from the Registry

If you want, you configure some functionality in the registry before installing MindManager. The installer reads these keys and retains these settings during installation. After installation is complete, you can hand configure these settings as well. To disable a function, set the registry value to "0". Reset the value to "1" to re-enable the function. Each key is of the type REG\_DWORD.

Table 11: Configuring Functions from the Registry

Functions	Examples
Macro Support	<p>The registry key is MacroUiEnabled.</p> <p>Example:</p> <pre>HKEY_LOCAL_MACHINE\Software\Mindjet\MindMa nager\&lt;x&gt;\Settings "MacroUiEnabled" (0)</pre>
Internet Access	<p>The registry key is InternetConnectionEnabled.</p> <p>Example:</p> <pre>HKEY_LOCAL_MACHINE\Software\Mindjet\MindMa nager\&lt;x&gt;\Settings</pre>

Functions	Examples
	"InternetConnectionEnabled" (0)
Online Help	<p>The registry key is OnlineHelpEnabled.</p> <p>Example:</p> <p><b>HKEY_LOCAL_MACHINE\Software\Mindjet\MindManager\&lt;x&gt;\Settings "OnlineHelpEnabled" (1)</b></p>
UI Customization	<p>The registry key is EnableUserCustomization.</p> <p>Example:</p> <p><b>HKEY_LOCAL_MACHINE\Software\Mindjet\MindManager\&lt;x&gt;\Settings "EnableUserCustomization" (1)</b></p>
Catalyst Access	<p>The registry key is ConnectEnabled.</p> <p>Example:</p> <p><b>HKEY_LOCAL_MACHINE\SOFTWARE\Mindjet\MindManager\&lt;x&gt;\Settings "ConnectEnabled" (0)</b></p> <p>Note: Catalyst is turned off by default in version 10.0</p>
Connect Access	<p>The registry key is Connect3Enabled.</p> <p>Example:</p> <p><b>HKEY_LOCAL_MACHINE\SOFTWARE\Mindjet\MindManager\&lt;x&gt;\Settings "Connect3Enabled" (1)</b></p> <p>Note: Connect is turned on by default in version 10.0, and this key must be entered manually.</p>
Disable Attachments	<p>The registry key is DisableAttachments.</p> <p>Example:</p> <p><b>HKEY_LOCAL_MACHINE\Software\Mindjet\MindManager\&lt;x&gt;\Settings "DisableAttachments" (1)</b></p>
Effort	<p>The registry key is ShowEffort.</p> <p>Example:</p> <p><b>HKEY_LOCAL_MACHINE\SOFTWARE\Mindjet\MindManager\&lt;x&gt;\Settings\ShowEffort</b></p> <p>Note: Set dword to either 0 or 1 during an LSD (or setup.exe) installation.</p>
License Key	<p>The registry key is License Key.</p> <p>Example:</p> <p><b>HKEY_LOCAL_MACHINE\SOFTWARE\Mindjet\MindManager\&lt;x&gt;\Registration</b></p> <p>Note: Use .reg script to set the key via ISX_SERIALNUM deployment.</p>

## Deploying User Data and the Library

As discussed in [Deploying User Data and the Library to a Server](#), you may want to deploy user data and the library to a server. If you want to deploy the user data and library on separate servers, you must do so from the command line or by editing the registry.

### Deploying User Data and the Library from the Command Line

The following commands give you the ability to deploy user data and the Library to separate locations. Each option consists of a property, which, when given a command line value, writes to the registry. You can also predefine these options by creating and executing a registry script before a silent setup, as described in [Using Registry Keys to Deploy User Data Files](#).

Table 12: User Data Deployment Options

Command	Resulting Registry Entry
<b>USERDATAPATH</b> ="<user specified path>"	<b>HKEY_LOCAL_MACHINE\Software\Mindjet\Mind Manager\&lt;x&gt;\Installer "LSDUserDataPath"</b> "<user specified path>"
<b>USERDATAPERUSERPATH</b> ="1"	Deploy user data in a per-user folder. 1=Enable 0=Default or disable <b>HKEY_LOCAL_MACHINE\Software\Mindjet\Mind Manager\&lt;x&gt;\Installer "LSDUserDataPerUser" (1)</b>
<b>USERDATAPATHSUFFIX</b> ="<user specified path>"	This folder is appended to the per-user folder. <b>HKEY_LOCAL_MACHINE\Software\Mindjet\Mind Manager\&lt;x&gt;\Installer "LSDUserDataPathSuffix" "&lt;user specified directory&gt;"</b>

Example:

```
msiexec /i "Mindjet MindManager <x> Admin.msi"  
USERDATAPATH="C:\Temp\UserData" USERDATAPERUSERPATH="1"  
USERDATAPATHSUFFIX="MyUserData"
```

Table 13: Library Deployment Options

Command	Resulting Registry Entry
---------	--------------------------

Command	Resulting Registry Entry
<b>LIBRARYSPATH</b> ="<user specified path>"	<b>HKEY_LOCAL_MACHINE\Software\Mindjet\Mind Manager\&lt;x&gt;\Installer "LSDLibraryPath"</b> "<user specified path>"
<b>LIBRARYSPERUSERPATH</b> ="1"	Deploy libraries in a per-user folder. 1=Enable 0=Disable <b>HKEY_LOCAL_MACHINE\Software\Mindjet\Mind Manager\&lt;x&gt;\Installer "LSDLibraryPerUser" (1)</b>
<b>LIBRARYSPATHSUFFIX</b> ="<user specified directory>"	This folder is appended to the per-user folder. <b>HKEY_LOCAL_MACHINE\Software\Mindjet\Mind Manager\&lt;x&gt;\Installer "LSDLibraryPathSuffix" "&lt;user specified directory&gt;"</b>
<b>LIBRARYSEXTRACT</b> ="1"	Extract libraries to path the first time MindManager starts. 1=Enable 0=Disable <b>HKEY_LOCAL_MACHINE\Software\Mindjet\Mind Manager\&lt;x&gt;\Installer "LSDLibraryExtract" (1)</b>

Example:

```
msiexec /i "Mindjet MindManager Admin.msi" LIBRARYSPATH
="C:\Temp\Libraries" LIBRARYSPERUSERPATH ="1"
LIBRARYSPATHSUFFIX ="MyLibraries" LIBRARYSEXTRACT="1"
```

## Deploying User Data from the Registry

During a silent (non-interactive) installation, you can deploy data user files by setting some registry values on the user's system in the registry key before running the installer:

```
HKEY_LOCAL_MACHINE\Software\Mindjet\MindManager\<x>\Installe  
er
```

**Table 14: User Data Registry Key Values**

Registry Value	Data Value
LSDUserDataPath	See "Server base path", above. Examples: N:\User Data\All Users\Mindjet\MindManager\ or N:\User Data (if LSDUserDataPerUser is set to 1)
LSDUserDataPerUser	0 = Do not use separate folders per user 1 = Do use separate folders per user
LSDUserDataPathSuffix	See "Append sub-path", above Example: Mindjet\MindManager\<x> Only applies if LSDUserDataPerUser is set to 1

If you want to deploy all of the user data, including the library on a server, create a registry file named "MindManager Large-Scale Deployment Options.reg" like this:

```
REGEDIT4

[HKEY_LOCAL_MACHINE\SOFTWARE\Mindjet]
[HKEY_LOCAL_MACHINE\SOFTWARE\Mindjet\MindManager]
[HKEY_LOCAL_MACHINE\SOFTWARE\Mindjet\MindManager\<x>]
[HKEY_LOCAL_MACHINE\SOFTWARE\Mindjet\MindManager\<x>\Installer]

"LSDUserDataPath"="N:\\User Data\\All
Users\\Mindjet\\MindManager <x>"

"LSDUserDataPerUser"=dword:00000001

"LSDUserDataPathSuffix"="User Data"

LSDLibraryPath= N:\\All Users\\Mindjet\\MindManager <x>

"LSDLibraryPerUser"=dword:00000001

"LSDLibraryPathSuffix"="Library"
```

```
"LSDLibraryExtract"=dword:0000001
```

## Sample Setup Commands

The following sections provide sample commands in order to demonstrate various installation scenarios.

### Simple Installation

This command simply runs the installer in the usual interactive mode.

```
Msiexec.exe /i "Mindjet MindManager <x> Admin.msi"
```

You can also run `MindManager <x> Admin.msi` from Windows Explorer.

### Silent Installation

This command silently runs the installer, supplying values for all required parameters.

```
Msiexec.exe /i "Mindjet MindManager Admin.msi" /qn  
INSTALLDIR="C:\Program Files\Mindjet\MindManager <x>\"  
ISX_SERIALNUM="MPxM-MM1-xxxx-xxxx-xxxx"
```

Note that the "xxxx-xxx-xxxx-xxxx-xxxx" portion of the license key must be replaced with a valid key. Optional parameters are `USERNAME` and `COMPANYNAME`.

### Sample Customized Installation Using ADDLOCAL and REMOVE

Here is an example for a customized silent install, using `ADDLOCAL` and `REMOVE`:

```
Msiexec.exe /i "Mindjet MindManager <x> Admin.msi" /qn /L*v  
"C:\MM<x>AdminSetup.log" INSTALLDIR="D:\Program  
Files\Mindjet\MindManager <x>\" ISX_SERIALNUM="MPxM-MM1-  
xxxx-xxxx-xxxx" USERNAME="John Doe" COMPANYNAME="Acme,  
Inc." ADDLOCAL="ALL" REMOVE="PDFWriter, MSWordAddin"  
MACROUI="0" INTERNETACCESS="0" UICUSTOMIZATION="0"  
ONLINEHELP="0"
```

Silent install options for the `MMPlayerExport` key that supports the MindManager Viewer feature are available and supported using Admin .MSI package.

To remove both the feature and JRE:

```
msiexec /i PATH_TO.msi ADDLOCAL="ALL" REMOVE="MMPlayerExport" /qn
```

To re-instate both the feature and JRE:

```
msiexec /i PATH_TO.msi ADDLOCAL="MMPlayerExport" /qn
```

## Uninstallation

This command uninstalls MindManager: `msiexec.exe /x "Mindjet MindManager <x> Admin.msi"`

# Deploying with Active Directory

Deploying MindManager via Active Directory and Group policies is has limited supported at this time because:

- MindManager setup only supports Computer-based software installation
- Some MindManager properties can only be configured from the command line

You can use configuration tools such as Orca to:

- Configure properties from the property table
- Save the settings to a transform file (MST)
- Deploy it with the updated values

Here is a list of properties you can modify in the Property Table:

Table 15: Properties Editable in Properties Table

Property	Description/Default Setting
<b>INTERNETACCESS=1 / 0</b>	<ul style="list-style-type: none"><li>Allow internet access in MindManager</li><li>Default=1</li></ul>
<b>ISX_SERIALNUM</b>	Specifies a license key to activate MindManager. Add to the properties table in the .mst file with the license key as the value.
<b>LIBRARIESPATH=&lt;defaultpath&gt;</b>	User can override default path.
<b>LIBRARIESPATHSUFFIX=&lt;defaultpath&gt;</b>	User can override default path.
<b>LIBRARIESPERUSERPATH=0 / 1</b>	<ul style="list-style-type: none"><li>Deploy libraries per user</li><li>Default=0</li></ul>
<b>LIBRARIESEXTRACT=1 / 0</b>	<ul style="list-style-type: none"><li>MindManager extracts libraries at first launch</li><li>Default=1</li></ul>
<b>USERDATAPATH=&lt;defaultpath&gt;</b>	User can override default path.
<b>USERDATAPATHSUFFIX=&lt;defaultpath&gt;</b>	User can override default path.

Property	Description/Default Setting
<b>USERDATAPERUSERPATH=0/1</b>	<ul style="list-style-type: none"> <li>• User Data deployed per user</li> <li>• Default=1</li> </ul>
<b>MACROUI=1/0</b>	<ul style="list-style-type: none"> <li>• Enable Macros in UI</li> <li>• Default=1</li> </ul>
<b>ONLINEHELP=1/0</b>	<ul style="list-style-type: none"> <li>• Enable online help</li> <li>• Default=1</li> </ul>
<b>REBOOTISREQUIRED=No/Yes</b>	<ul style="list-style-type: none"> <li>• Require reboot after installation</li> <li>• Default=No</li> </ul>
<b>TOPICALERTSLINKER=1/0</b>	<ul style="list-style-type: none"> <li>• Enable topic alerts linker</li> <li>• Default=1</li> </ul>
<b>UICUSTOMIZATION=1/0 (default=1)</b>	<ul style="list-style-type: none"> <li>• Enable UI customization</li> <li>• Default=1</li> </ul>
<b>SHORTCUTDESKTOP=1/0 (default=1)</b>	<ul style="list-style-type: none"> <li>• Create Desktop shortcut</li> <li>• Default=1</li> </ul>
<b>SHORTCUTQUICKLAUNCH=1/0</b>	<ul style="list-style-type: none"> <li>• Create QuickLaunch shortcut</li> <li>• Default=1</li> </ul>
<b>SHORTCUTSTARTMENU=1/0 (default=1)</b>	<ul style="list-style-type: none"> <li>• Create StartMenu shortcut</li> <li>• Default=1</li> </ul>

Mindjet recommends:

- Saving these settings to the transform file as a backup, rather than directly to the MSI
- Deploying MindManager on a per-machine basis only, avoiding the possibility that the machines with multiple users get multiple copies of MindManager installed
- Creating a policy for “Always install elevated” otherwise the installation may fail
- On the features table, setting the InstallLevel for the PDFWriter to 101 or higher if you want to disable it

# Deploying with Windows Server

You can install MindManager with Windows Server 2003 running Terminal Services and then deploy it to variety of client machines.

To install MindManager on a Windows Server 2003 running Windows Terminal Services (WTS):

1. Log on to the Windows Terminal Server as an administrator.
2. Launch Mindjet `MindManager Admin.msi`.
3. We recommend using the Add/Remove Programs applet in the Windows Control Panel.
4. Avoid running the installer directly from Windows Explorer unless you are familiar with using the "change user /install" and "change user /execute" commands.
5. Select Add New Programs and then CD or Floppy.
  - i. The automatic procedure does *not* find the MindManager setup program.
6. For the Run Installation Program dialog, click Browse.
7. In the Browse dialog:
  8. Change Files of type to Programs.
  9. Navigate to the location of the MindManager installer.
  10. Select `Mindjet MindManager <x> Admin.msi`.
  11. Click Open and then Next to start the installer.
12. In the Customer Information dialog, leave the User Name blank or chose a "generic" name.
  - i. The user can customize this in MindManager by entering an Organization name and the MindManager License Key.
13. In the Setup Type dialog, choose Complete or Custom as desired.
  - i. For details about customization, see [Deploying MindManager Using the Installation Wizard](#).
14. Complete the installation as outlined in [Completing the Standard Installation](#).

15. Please make sure to finish the Admin Install wizard of the Windows Terminal Server by clicking the Finish or Cancel button. **DO NOT START MINDMANAGER BEFORE THIS DIALOG IS FINISHED!**

You can now run MindManager on the server with the Windows Remote Desktop Connection client.

MindManager runs in full color mode and does not support 256-color mode. For best results run the terminal server clients in full color mode as well. Deploying MindManager under Windows 2000 server will function, but with less than optimal results.

**Tip**

For known issues operating MindManager with Windows Server 2003, consult: “Known Issues Running MindManager on a Windows Terminal Server or Citrix MetaFrame Presentation Server” online in the Support Center Knowledge Base at [Mindjet.com](http://Mindjet.com).

# Deploying with Citrix Presentation Server

The Citrix MetaFrame Presentation Server is a sophisticated terminal server environment built on top of the Windows Terminal Services provided by Windows Server. This is currently the only tested and supported Citrix platform for MindManager, though other combinations may also behave properly.

## Tip

For known issues operating MindManager with Citrix MetaFrame Presentation Server, consult: Known Issues Running MindManager on a Windows Terminal Server or Citrix MetaFrame Presentation Server online in the Support Center Knowledge Base at [Mindjet.com](http://Mindjet.com).


## Basic Installation for the Citrix Desktop

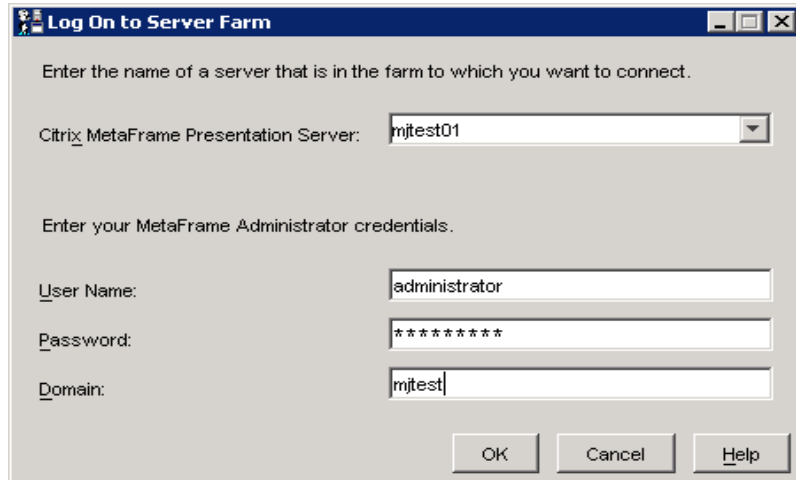
For better Citrix performance, do not install MindManager on a C: drive. After installation, MindManager appears as part of the Citrix Desktop – a single window containing icons for all the published applications.

## Advanced Installation of a "Seamless" Window

You can also install MindManager to Citrix as a seamless individual application window, instead of installing as part of the Citrix desktop, as described above.

To install MindManager as a "seamless" individual application window:

1. Install MindManager on a Windows Server 2003 running Windows Terminal Services (WTS)
2. Click the Presentation Server Console button  from the Citrix toolbar.
3. Log on to the server.



**Log On to Server Farm**

Enter the name of a server that is in the farm to which you want to connect.

Citrix MetaFrame Presentation Server:

Enter your MetaFrame Administrator credentials.

User Name:

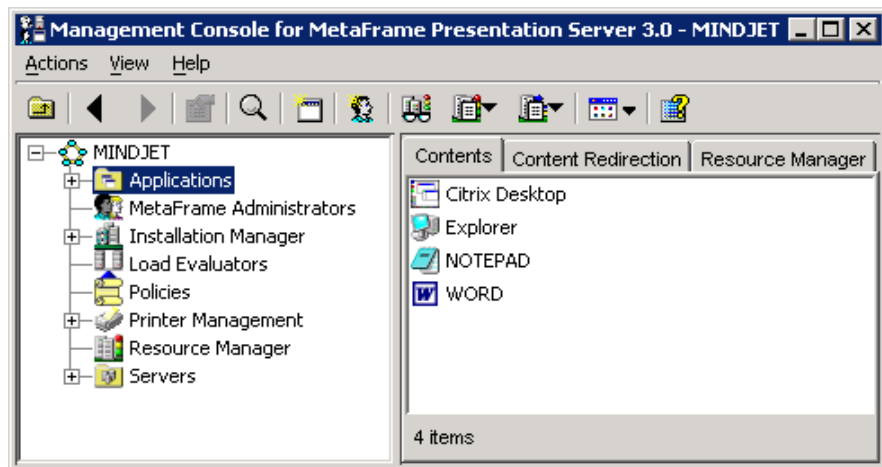
Password:

Domain:

OK Cancel Help

i.

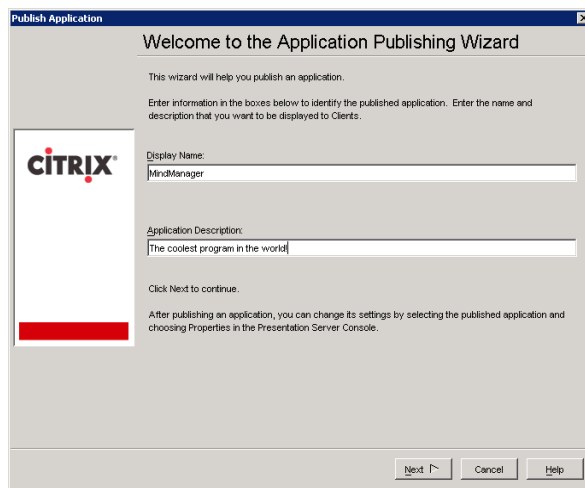
4. In the tree, select Applications.



i.

5. Right-click Applications.

6. Select Publish Applications. (The Application Publishing Wizard appears).



**Publish Application**

Welcome to the Application Publishing Wizard

This wizard will help you publish an application.

Enter information in the boxes below to identify the published application. Enter the name and description that you want to be displayed to Clients.

**CITRIX**

Display Name:

Application Description:

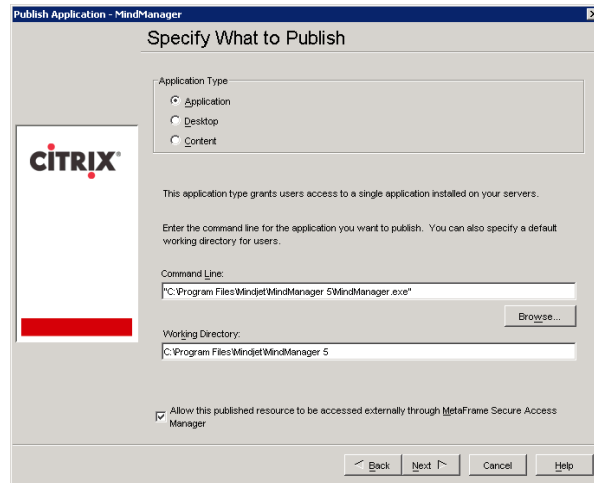
Click Next to continue.

After publishing an application, you can change its settings by selecting the published application and choosing Properties in the Presentation Server Console.

Next Cancel Help

i.

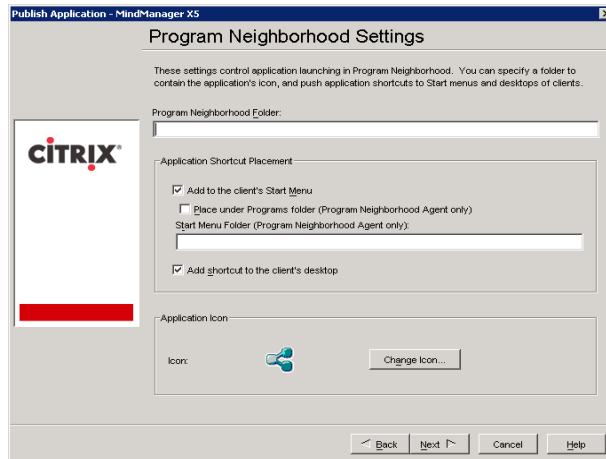
## 7. Specify what to publish.



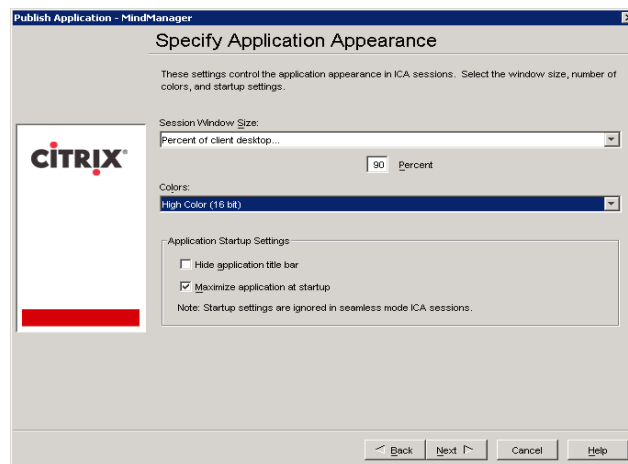
i.

## 8. Define the Program Neighborhood Settings.

9.

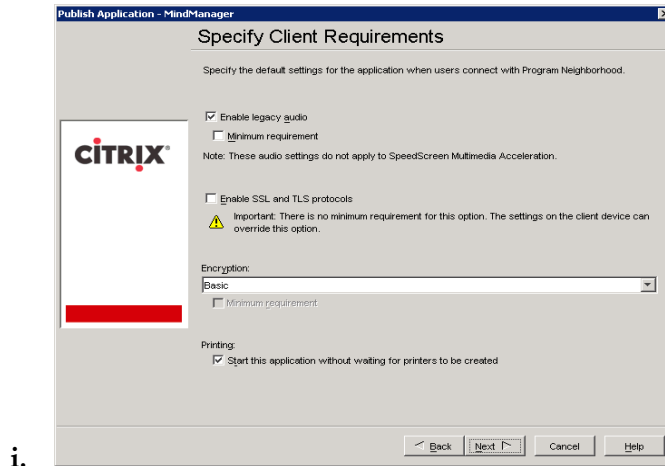


## 10. Define the Application Appearance options. (Set to High Color or True Color).

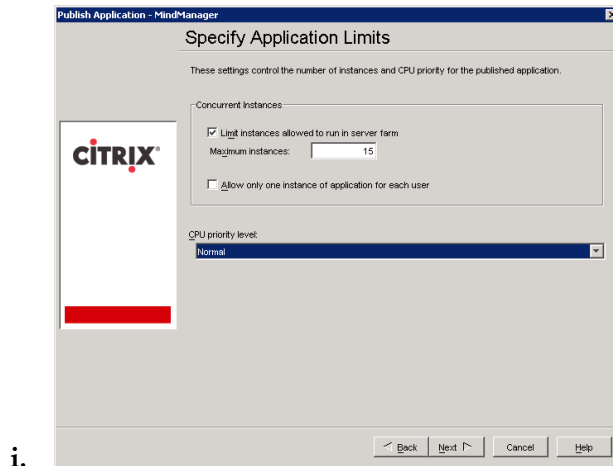


i.

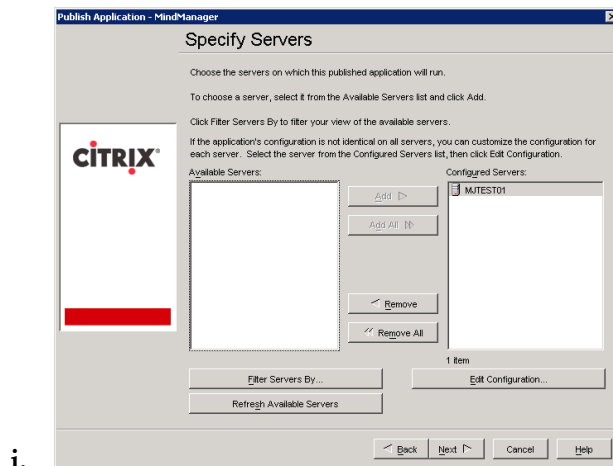
**11. Specify special client requirements. (Default settings are fine).**



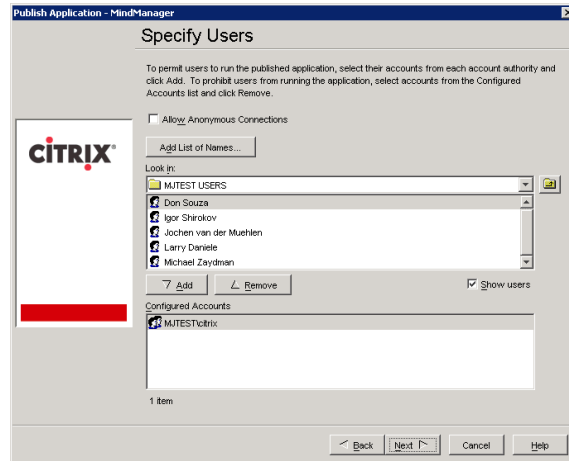
**12. Specify the number of licenses you have purchased in the "Maximum instances" field.**



**13. Specify which servers will deploy MindManager.**

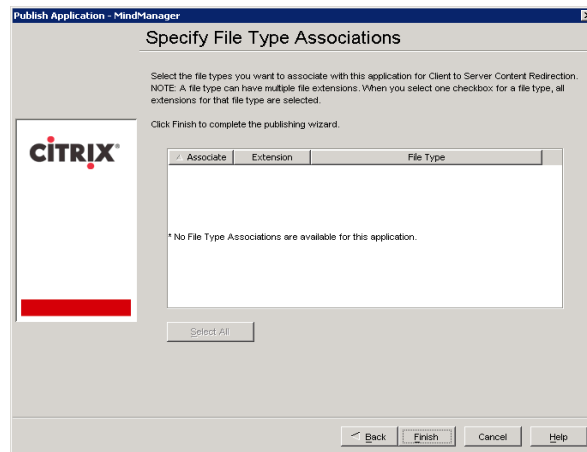


**14. Specify users. (We recommend doing this by group to ease adding single users).**



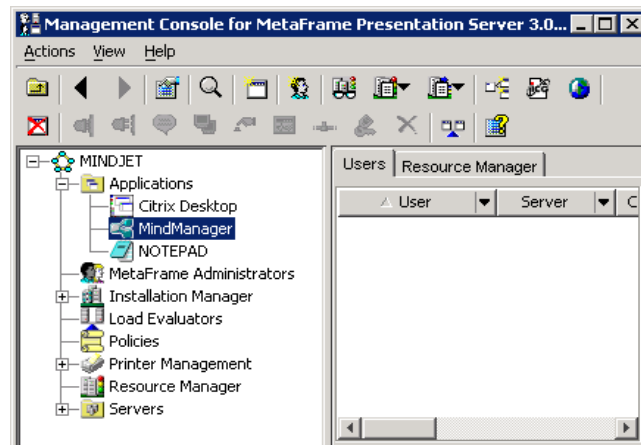
i.

15. Leave the File Type Associations page empty; MindManager is registered on the server.



i.

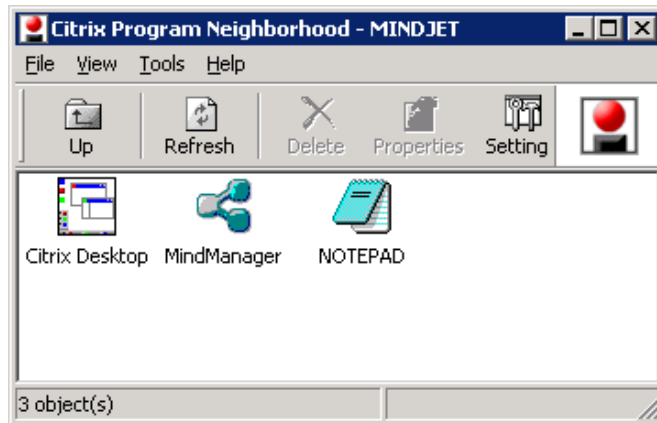
ii. Once you are done, you should see the MindManager application in the Applications section:



iii.

iv. The MindManager icon now appears in authorized users' Citrix Program Neighborhood.

16.



17. For more configuration options, please consult your Citrix documentation.

# Administering MindManager

There are other administrative issues involved in deploying MindManager on a large scale. You can address many of them using administrative tools and methods described below.

## Managing Add-Ins

MindManager uses a number of add-in DLLs. The Add-Ins are automatically registered when MindManager is installed. On startup, the Add-Ins check for any other required resources (e.g. the supported version(s) of Microsoft Word). They enable or disable themselves as appropriate. If an add-in fails to start, it is automatically removed from the MindManager list of add-ins (but not from the disk).

## Registering or Unregistering Add-Ins from the Command Line

To unregister the MindManager Word add-in:

1. Select Start>Run.
2. Enter the command: `regsvr32 /u "C:\Program Files\Mindjet\MindManager<x>\Mm10Word.dll"`
3. To restore an unregistered add-in: the MindManager Word add-in,
4. Select Start>Run.
5. Enter the command: `regsvr32 "C:\Program Files\Mindjet\MindManager<x>\Mm10Word.dll"`

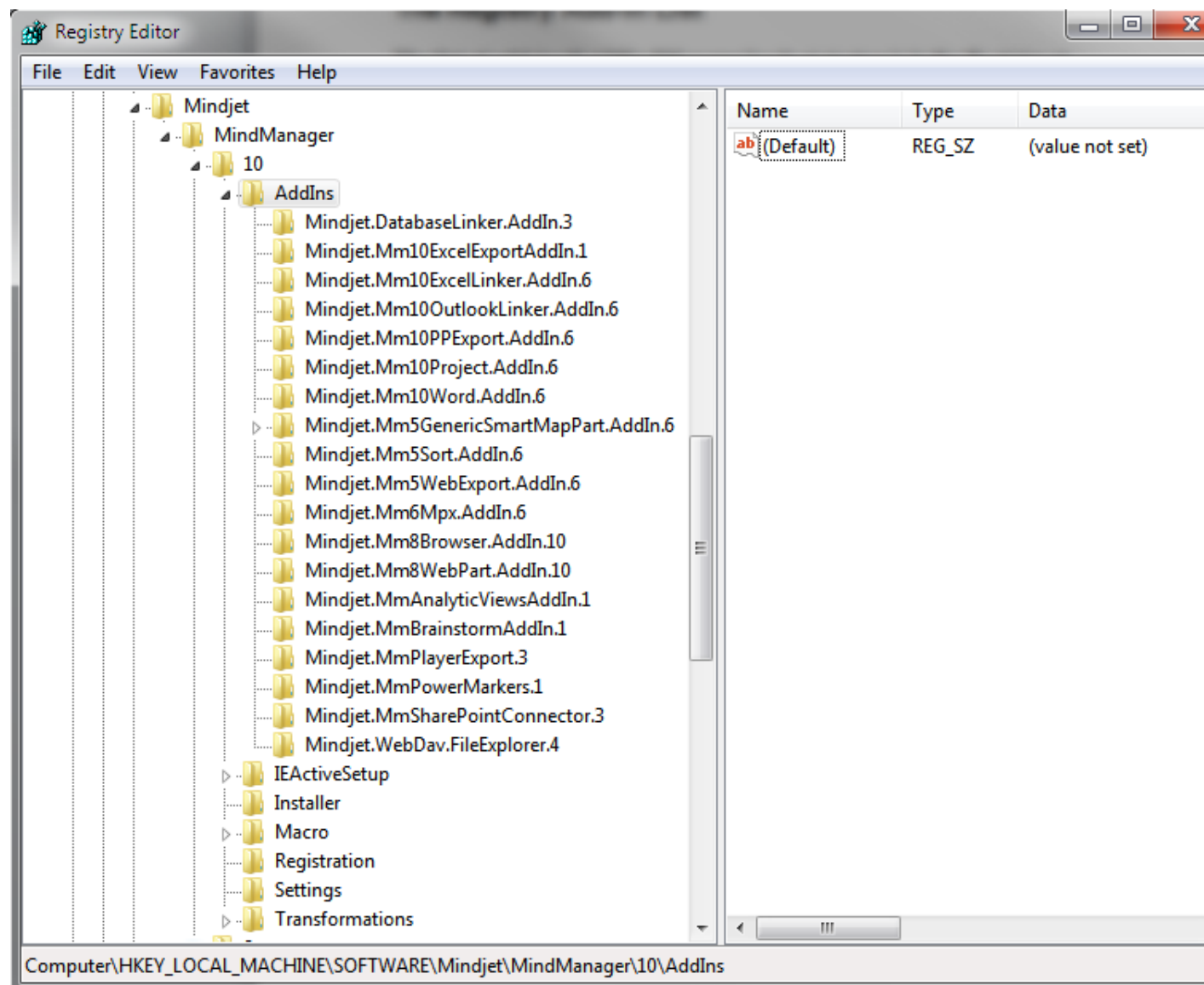
## Managing Add-Ins from the Registry

Users can enable and disable add-ins via the MindManager Tools > Add-Ins command. However, if desired it is possible to disable or remove individual MindManager add-ins via the Windows Registry.

## The Registry Add-In List

The list of add-ins that MindManager loads at startup is in the Registry at:

**HKEY\_LOCAL\_MACHINE\SOFTWARE\Mindjet\MindManager\<x>\AddIns**



## Removing or Restoring Add-Ins from the Registry

To remove a MindManager add-in (i.e. make it "invisible" to MindManager) delete its registry subkey.

Mindjet MindManager Large Scale Deployment Guide

Version 10.1.0

January 19, 2012

To remove the Word add-in, delete the following key:

```
HKEY_LOCAL_MACHINE\SOFTWARE\Mindjet\MindManager\<x>\AddIns\Mi  
ndjet.Mm<x>Word.AddIn.x
```

This makes the add-in "invisible" to MindManager so it will not be loaded on program startup and will not be seen in the list of add-ins in the Tools -> Add-Ins dialog. However, the add-in DLL files still exist on the hard drive along with MindManager.

Another way to remove an add-in is to unregister it as described in [Registering or Unregistering Add-Ins from the Command Line](#). We do not recommend deleting the add-ins DLLs since they will be restored automatically the next time the program is run via its shortcut.

## Enabling or Disabling Add-Ins from the Registry

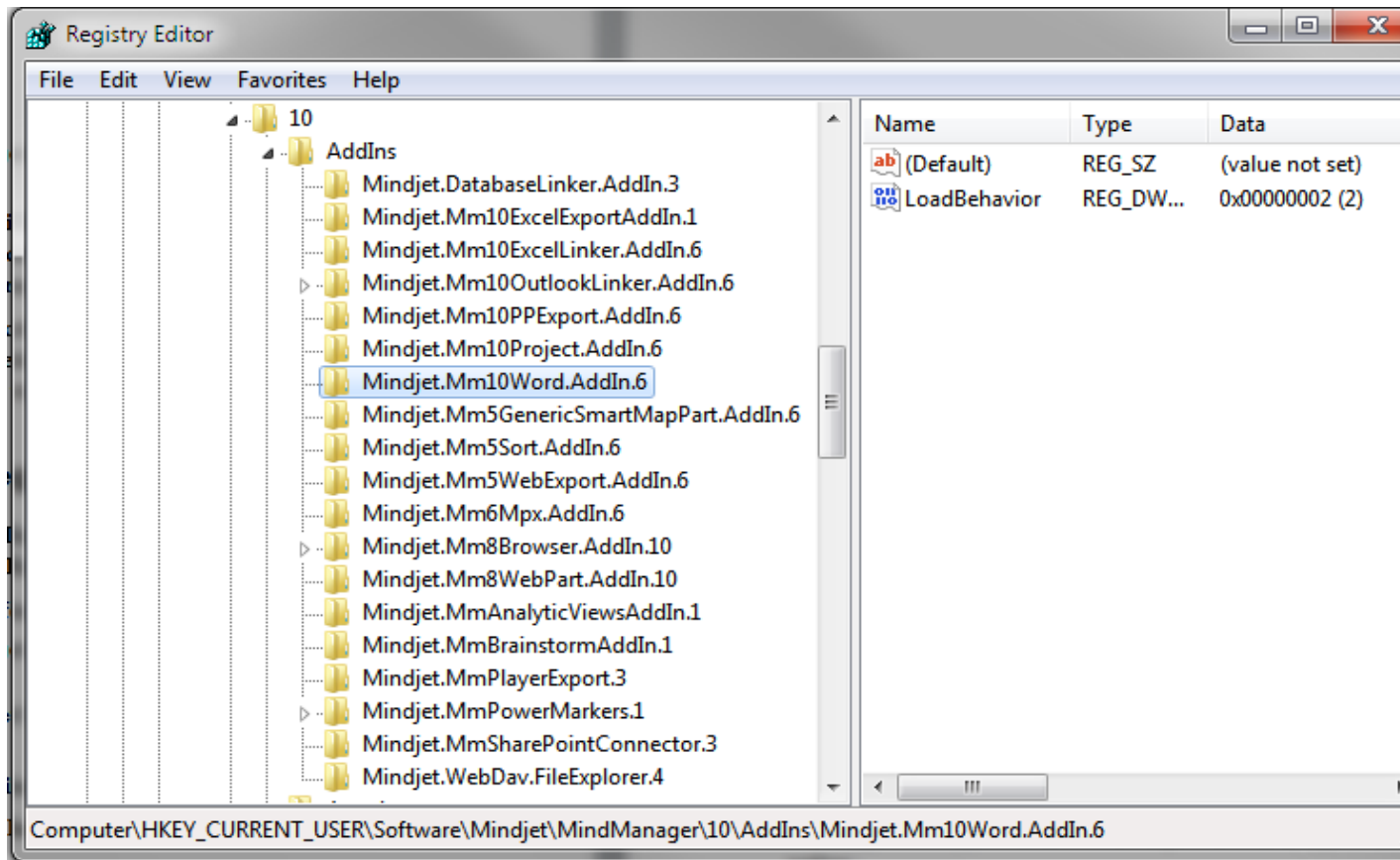
Users can disable or enable a given add-in directly from MindManager via the Tools -> Add-Ins command. Add-ins can also be disabled via the Windows Registry as described below.

There are two keys to consider when disabling an add-in for a given user:

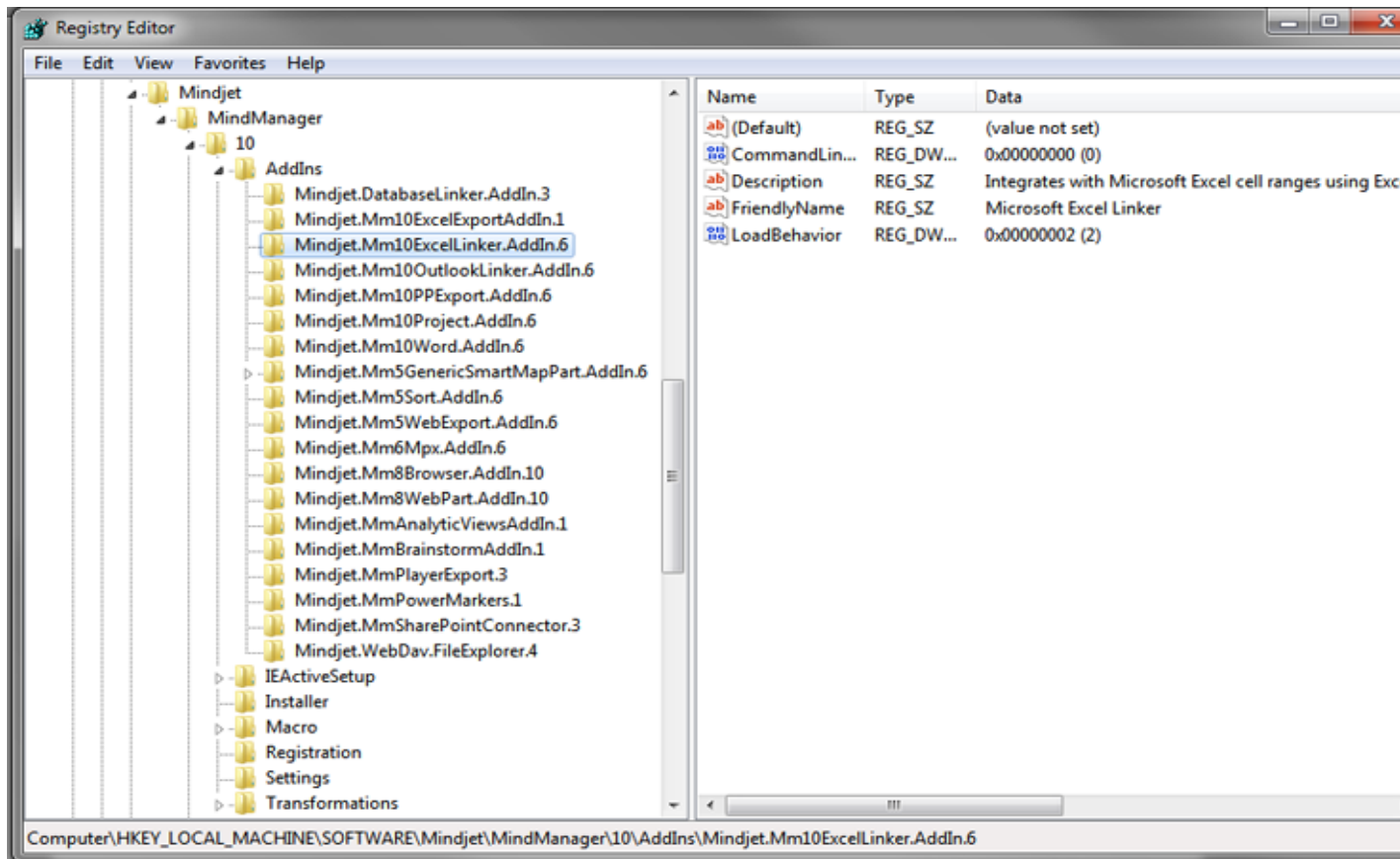
```
HKEY_LOCAL_MACHINE\SOFTWARE\Mindjet\MindManager\<x>\AddIns\  
AddInName  
  
HKEY_CURRENT_USER\SOFTWARE\Mindjet\MindManager\<x>\AddIns\  
AddInName
```

where *AddInName* is the actual name of the add-in (e.g. Mindjet.Mm<x>Word.AddIn.x).

When a given user starts MindManager, the program checks first in the HKEY\_CURRENT\_USER subkey for a "LoadBehavior" value. If it exists, it is used.



If it does not exist, MindManager copies the LoadBehavior value from the HKEY\_LOCAL\_MACHINE subkey to the HKEY\_CURRENT\_USER subkey and then uses that value.



Therefore, to disable an add-in for the current user, set the LoadBehavior value in the HKEY\_CURRENT\_USER subkey to 0.

To disable the add-in for all new users, set the LoadBehavior value in the HKEY\_LOCAL\_MACHINE subkey to 0.

Note: This has no effect on users that have already run MindManager at least once. For them you must set LoadBehavior in the HKEY\_CURRENT\_USER subkey.

Similarly, setting LoadBehavior to 2 enables the add-in again.

## Managing Microsoft Office Add-Ins

When MindManager is installed, it registers add-ins for MS Office products. The location of this add-in registration in the Windows Registry depends on the application and the add-in. For example, the MindManager add-in for Microsoft Word is registered on a per-machine basis (so all users of the machine have it) at:

**HKEY\_LOCAL\_MACHINE\SOFTWARE\Microsoft\Office\Word\Addins\Mindjet.Mm<x>Word.AddIn.x**

Note that Word handles the Tools -> "COM Add-Ins" command and user interface differently than MindManager. In Word, if an add-in is registered in HKEY\_LOCAL\_MACHINE (HKLM), then it is *not* displayed in the COM Add-Ins dialog. If an add-in is registered in HKEY\_CURRENT\_USER (HKCU), it is displayed in the dialog and can be turned off and on. If the add-in is registered both in HKLM and HKCU, Word ignores the HKCU entry and just uses the HKLM entry.

The registry data values for the Microsoft program add-ins are the same as described for the MindManager add-ins and can be edited in a similar fashion.

## Managing MindManager from the Registry

MindManager supports registry settings to make it easier for system administrators to control the MindManager environment presented to their users. Most MindManager registry settings can be set via the MindManager user interface. These registry settings relevant to Large-Scale Deployment are *not* available from the MindManager user interface. See also the user data options, which can also be set via registry settings.

### HKEY\_LOCAL\_MACHINE Settings

The following MindManager registry settings are used on a per-machine basis:

**HKEY\_LOCAL\_MACHINE\SOFTWARE\Mindjet\MindManager\<x>\Registration**

Table 16: HKEY\_LOCAL\_MACHINE Registration Values

Value Name	Type	Value Data
ShowLicense	REG_DWORD	0 to not show the license key being used or allow it to be changed. 1 to show the license key
ChangeLicense	REG_DWORD	0 to prevent changing the MindManager license key. 1 to allow the license key to be changed.

The following MindManager registry settings are used on a per-machine basis:

**HKEY\_LOCAL\_MACHINE\SOFTWARE\Mindjet\MindManager\<x>\Settings**

Table 17: HKEY\_LOCAL\_MACHINE Settings

Value Name	Type	Value Data
LocalUserDataDirectory	REG_SZ	<p>Path to copy user data files (e.g. Image Library files, etc.)at first launch. May contain environment variables. For example:</p> <p><b>N: \UserData\%USERNAME% \MindManager &lt;x&gt;</b></p> <p>If no path is specified, then this path is assumed:</p> <p><b>%USERPROFILE%\Local Settings\ Application Data\MindManager\&lt;x&gt;</b></p> <p>This setting can be overridden by the same setting in HKEY_CURRENT_USER (see below) or by the LSDUserDataPath setting described earlier.</p>
PerUserInstallation	REG_DWORD	<p>0 for per-machine license key management.</p> <p>1 for per-user license key management.</p>

## HKEY\_CURRENT\_USER Settings

The following MindManager registry settings are used on a per-user basis:

**HKEY\_CURRENT\_USER\SOFTWARE\Mindjet\MindManager\<x>\Settings**

Table 18: HKEY\_CURRENT\_USER Settings

Value Name	Type	Value Data
AllowUpdateCheck	REG_DWORD	<p>0 to hide the Help, Check for Updates command.</p> <p>1 to show this command.</p> <p>2 to show this command only if the user has write privileges to HKEY_LOCAL_MACHINE (default)</p>

<b>DisableAnimation</b>	<b>REG_DWORD</b>	<p>0 to allow animation of maps for smoother scrolling.</p> <p>1 to disable animation of maps for one-jump scrolling which is less graphics intensive and perhaps more desirable in a low-bandwidth Windows Terminal Server environment.</p>
<b>LocalUserDataDirectory</b>	<b>REG_SZ</b>	<p>Path to copy user data files (e.g. Image Library files, etc.) to when a new user first starts MindManager. May contain environment variables. For example:</p> <p><b>N: \UserData\%USERNAME%\MindManager&lt;x&gt;</b></p> <p>If no path is specified, then this path is assumed:</p> <p><b>%USERPROFILE%\Local Settings\Application Data\MindManager\&lt;x&gt;</b></p> <p>This setting can be overridden by the LSDUserDataPath setting described earlier.</p>

## Managing MindManager with Event Macros

MindManager can trigger certain Event Macros that can help system administrators monitor the usage of the program more carefully.

These macros are examples only. You need to customize them for your environment.

Microsoft added the Outlook Object Model Guard starting with Outlook version 2002, forcing the display of an alert message informing the user that a program is trying to access or send a message via Outlook, which the user must approve before proceeding. This behavior can be controlled by Outlook system policies.

**Table 19: Event Macros**

<b>Event Name</b>	<b>When Fired</b>
<b>OnApplicationStarted</b>	At the end of InitInstance, only when started in "normal" mode, not /RegServer, /UnregServer, etc.)
<b>OnExpiredTrialStarted</b>	Just before the "Trial Expired" dialog

Event Name	When Fired
OnFirstUse	Just before we install "per-user data"
OnBuyButtonPressed	Just before the "Buy MindManager" dialog is displayed

When a macro event is fired, 0 or more macros are run. The mapping of macro event names to macro filenames is determined on startup.

On startup, MindManager looks in the registry at

```
HKEY_LOCAL_MACHINE\SOFTWARE\Mindjet\MindManager\<x>
```

for a key named Event Macros. If it is found, we might expect to find keys such as these:

```
Event Macros\
    OnApplicationStarted\
        EventMacro_OnApplicationStarted.mmbas
        EventMacro_OnApplicationStartedTwo.mmbas

Path="C:\Temp\EventMacro_OnApplicationStartedTwo.mmbas"
    OnBuyButtonPressed\
        EventMacro_OnBuyButtonPressed.mmbas
    OnExpiredTrialStarted\
        EventMacro_OnExpiredTrialStarted.mmbas
    OnFirstUse\
        EventMacro_OnFirstUse.mmbas
```

Each event key can have 0 or more macro key names. Each macro key can have an *optional* "Path" value. If the "Path" value is not there, then the key name is the path. If the path is a relative path (e.g. "EventMacro\_OnApplicationStarted.mmbas"), it is converted to an absolute path relative to the default macro folder for the user (e.g. "C:\Documents and Settings\UserName\Local Settings\Application Data\Mindjet\MindManager\<x>\macros").

If the "Event Macros" key is not in the registry, then MindManager looks for event macros in the default macro folder (see above) with a name of the form:

```
EventMacro_<EventName>.mmbas
```

For example:

Mindjet MindManager Large Scale Deployment Guide  
Version 10.1.0  
January 19, 2012

#### **EventMacro\_OnApplicationStarted.mmbas**

Therefore, it is possible to get macro events to run a macro simply by putting macros with the proper name in the user's macro folder. However, for most typical IT uses, the "Event Macros" key will be used since this can point to macros on some network drive, for example.

For example, this "EventMacro\_OnApplicationStarted.mmbas" macro uses the Outlook object model to send a notification email:

```
'#Uses "EventMacro_Uilities.mmbas"
Sub Main
    SendNotificationEmail "MindManager event: Application
    Started"
End Sub
```

Where the "EventMacro\_Uilities.mmbas" file contains:

```
' Utilities for use with MindManager event macros

Public Sub SendNotificationEmail(eventString As String)
    ' Sends the subject string to the appropriate IT
    person
    ' to notify them of the MindManager event that just
    occurred

    ' Get access to our email program
    Dim outlookApp As Outlook.Application
    Set outlookApp = New Outlook.Application

    ' Create a message
    Dim message As Outlook.MailItem
    Set message = outlookApp.CreateItem(olMailItem)
    message.To = "System Administrator"
    message.Subject = eventString
    message.Body = eventString

    ' Send the message
    message.Send
End Sub
```

## Managing User Licenses

Each MindManager user must have a license. Please contact your reseller or Mindjet sales representative for licensing terms appropriate for Large-Scale Deployment. MindManager does not include any special support for proprietary third-party license management software.

MindManager can check and administer license keys on a per-user or per-machine basis. MindManager first looks for a license key in:

**HKEY\_LOCAL\_MACHINE\SOFTWARE\Mindjet\MindManager\<x>\Registration\**

The default MindManager installation administers license keys on a per-machine basis. A license key can be entered after the program is installed, and all users of that machine have access to the program via that key.

To achieve per-user license key administration for MindManager:

1. Install MindManager with no license key: Use the installation wizard (which does not ask for a key), or use command-line installation without specifying a license key.
  - i. Or, set the registry key: **HKEY\_LOCAL\_MACHINE\SOFTWARE\Mindjet\MindManager\<x>\Settings\PerUserInstallation** to 1 after installation. This setting instructs MindManager to save any license key the user enters to the HKCU setting instead of the HKLM setting.
2. The administrator should put the user's license key in the user's HKCU registry setting, above, or communicate the user's license key to permit the user to enter it in the license key dialog that is automatically displayed upon launching MindManager in Trial mode.

## Policies Support

MindManager does not offer official Windows Policies support.

## SharePoint Site Connection

MindManager supports an optional silent argument for deploying a SharePoint SITECONNECTIONFILE as a way to prepopulate custom SharePoint connections.

Optional silent install argument:

**SITECONNECTIONFILE=full\_path\_to\_custom\_site\_connection\_file**

**This file can have any name but must be reachable from install-to machine**

**This file is copied to “SiteConnections.xml” in the MMD INSTALLDIR**

**Note: This argument will have no operational effect when MindManager runs if the SharePoint Add-In is not active.**